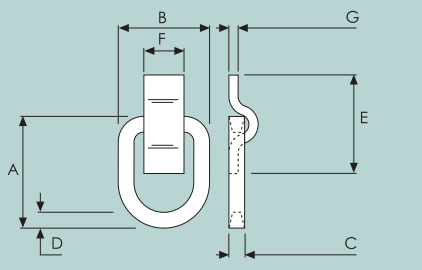


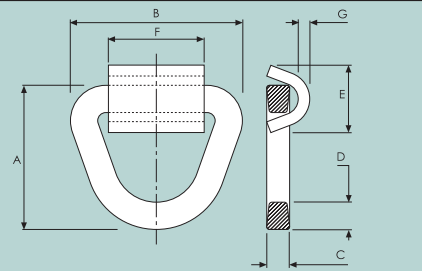
Lashing Rings



HEAVY DUTY LASHING RING

Self-colour, mild-steel cleat with a galvanised, forged steel D-ring. 5 tonne S.W.L.

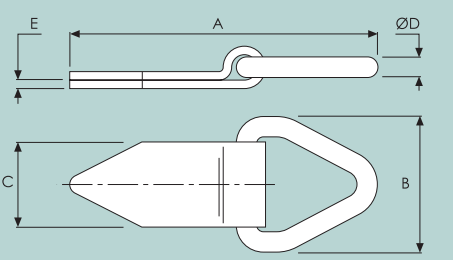
	A	B	C	D	E	F	G	H
1060/001	Weight 1.5kg/3.3lb							
METRIC (mm)	140	115	20	20	120	50	10	
IMPERIAL (ins)	5.51	4.53	0.79	0.79	4.72	1.97	0.40	

FERRY LASHING RING

Self colour, mild steel cleat with a forged steel, galvanised triangular ring. Conforms to EN29367 (ISO9367).

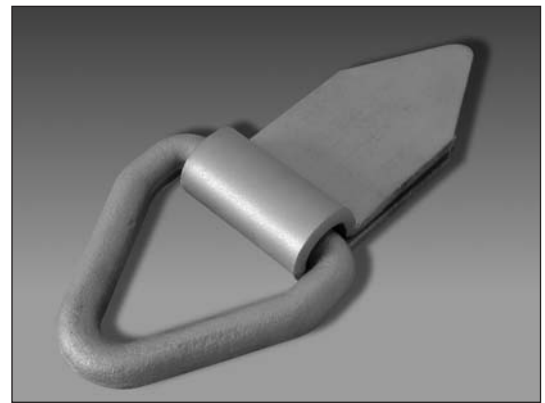
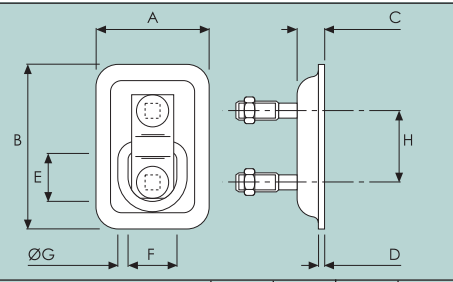
	A	B	C	D	E	F	G	H
1060/002	Weight 2.95kg/6.5lb							
METRIC (mm)	151	176	25	28	70	100	12	
IMPERIAL (ins)	5.95	6.93	1.00	1.10	2.76	3.94	0.47	

LASHING RING

Self-colour, mild steel strap with a forged triangular ring. 1 tonne S.W.L.

	A	B	C	D	E	F	G	H
1069/001	Weight 640g/1.4lb							
METRIC (mm)	185	82	50	12.5	5			
IMPERIAL (ins)	7.28	3.23	1.97	0.49	0.20			

RECESSED ROPE RING

Zinc-plated, mild steel assembly, including 2 x M8 coachbolts. Zinc plated, forged steel ring. 500kg S.W.L.

	A	B	C	D	E	F	G	H
1048/001	Weight 330g/11.7oz							
METRIC (mm)	70	106	16	3	31	31	65	45
IMPERIAL (ins)	2.76	4.17	0.63	0.12	1.22	1.22	0.26	1.77
1048/002	Back-plate		Weight 160g/5.7oz					





		A	B	C	D	E	F	G	H
1057/001		Weight 370g/13.1oz							
METRIC (mm)		95	101	22	73	79	63	70	7
IMPERIAL (ins)		3.74	3.98	0.87	2.87	3.11	2.48	2.76	0.28

		A	B	C	D	E	F	G	H
1057/013		Weight 538g/1.2lb							
METRIC (mm)		108	146	23.8	88.9	127	68.8	123	7.15
IMPERIAL (ins)		4.25	5.75	0.94	3.50	5.00	2.71	4.84	0.28



		A	B	C	D	E	F	G	H
1057/011		Zinc Plated		Weight 470g/1.04lb					
1057/0115		304 Stainless Steel*		Weight 420g/14.8oz					
METRIC (mm)		41	6.8	21	3	105	85	11	49
IMPERIAL (ins)		1.62	0.27	0.83	0.12	4.13	3.35	0.43	1.93

Lashing Rings

PIVOTAL LASHING RING.

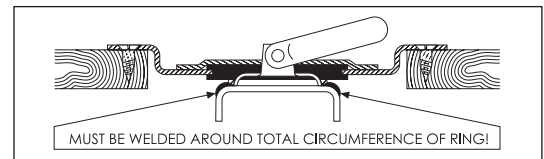
Galvanised, forged steel, swivel-ring assembly.
Zinc-plated, pressed steel dish & seal plate.
Supplied with a rubber gasket.
2 tonne S.W.L.

	A	B	C	D	E	F	G	H
1057/007								
	Weight 800g/1.8oz							
METRIC (mm)	178	132	19	1.7	158	7		
IMPERIAL (ins)	7	5.2	0.75	0.07	6.22	0.28		

1. Weld pivotal ring sub-assembly to trailer cross-member, weld must be totally around the retainer dish.
2. Router hole in timber floor to suit pan and pivotal ring.
3. Fit rubber seal over ring, then place pan over ring and fit rubber seal into hole in the pan.
4. Screw pan to floor.
5. Place seal-plates around ring, covering rubber seal and tack-weld at 4 equal positions around outside diameter of seal-plate



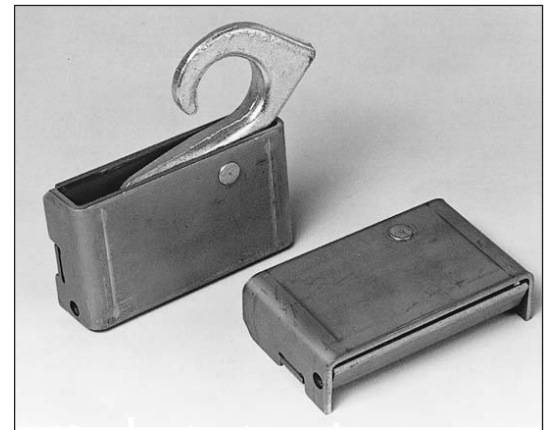
FITTING INSTRUCTIONS



UNDER-FLOOR LASHING RING

Self-colour, mild-steel case with a zinc plated, forged-steel hook.
4000kg S.W.L.

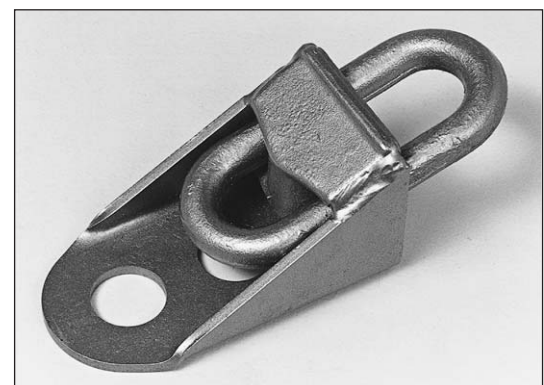
	A	B	C	D	E	F	G	H
1061/001								
	Weight 1.33kg/2.9lb							
METRIC (mm)	132	78	35	30.5	4	39	42	14
IMPERIAL (ins)	5.20	3.07	1.38	1.20	0.16	1.54	1.65	0.55

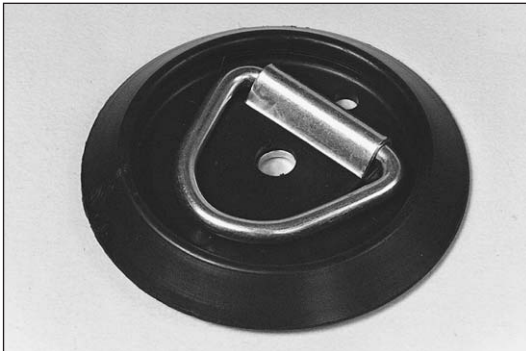


FLOOR LASHING RING

Drop forged, galvanised ring with fabricated, self-colour steel bracket.
Ring is stored below floor level when not in use.
2500kg S.W.L.

	A	B	C	D	E	F	G	H
1058/001								
	Weight 920g/2lb							
METRIC (mm)	65	115	66	25	14			
IMPERIAL (ins)	2.56	4.53	2.6	0.98	0.55			





TIE-DOWN RING									
Zinc plated ring and cleat with a black, polypropylene circular base. 362kg S.W.L.									
	A	B	C	D	E	F	G	H	
5589/515	Weight 100g/3.5oz								
METRIC (mm)	104	73	12.7	6.5	11				
IMPERIAL (ins)	4.10	2.87	0.50	0.26	0.43				



LASHING RING & CLEAT										
Zinc plated ring with a galvanised cleat.										
	A	B	C	D	E	F	G	H		
1049/003	Cleat				Weight 40g/1.4oz					
1049/004	Ring				Weight 40g/1.4oz					
METRIC (mm)	19	2	6.5	33	41	5	44			
IMPERIAL (ins)	0.75	0.08	0.26	1.30	1.61	0.2	1.73			



LIGHTWEIGHT LASHING RING									
Zinc plated, mild steel.									
	A	B	C	D	E	F	G	H	
1062/001	Weight 30g/1.1oz								
METRIC (mm)	79.0	30.0	5.0	32.0	10.5	7.0	16.0	2.0	
IMPERIAL (ins)	3.11	1.18	0.20	1.26	0.41	0.28	0.63	0.08	