



Bansbach: Gas Springs

Easylift Gas Springs

Over 25 years of experience supplying a diverse range of gas springs means that Bansbach enjoys an envious reputation. Their experience and efficient manufacturing is recognised and appreciated by many companies, not only in Europe, but through-out the World.

By the use of modern, environmentally compatible, high-capacity manufacturing systems and optimised production processes, they are able to provide rapid deliveries, exceptional durability and a high degree of flexibility.

Stringent inspection procedures and technical expertise acquired over many years ensures the quality and dependability of the end products.

Our long association with Bansbach has given us many years experience which enables us to respond quickly and positively to your needs, giving advice and assistance, thus, helping you to determine which gas spring is most suited to your particular application.

Should it prove impossible to match your specification from our extensive stock range, Bansbach can manufacture to most specifications and, due to their speedy production, we can offer an exceptional delivery service.



compression



lockable



traction



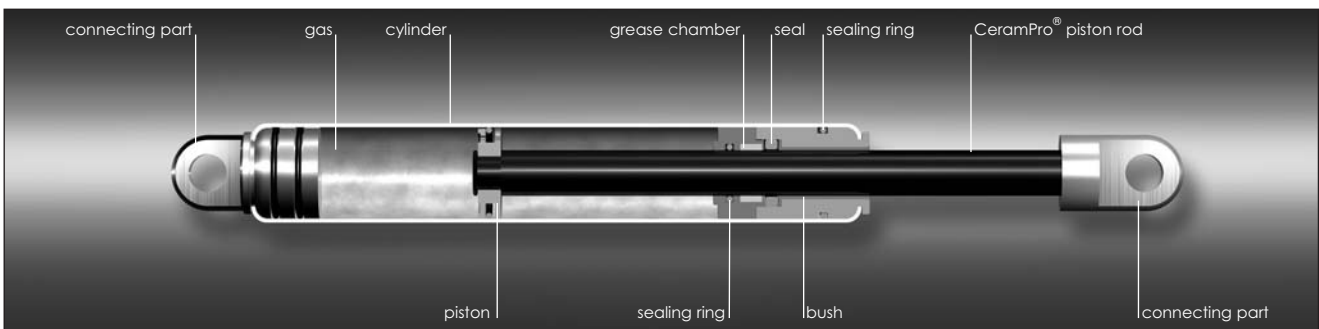
stainless



dampers

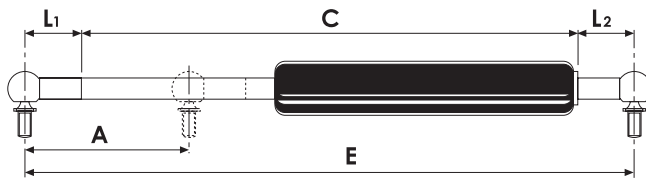
CeramPro® technology

The CeramPro® surface treatment is a new innovative development out of the Bansbach development laboratory. CeramPro® offers maximum rust and corrosion resistance of the piston rod. This special surface treatment provides an extremely smooth surface with excellent operating characteristics that provide superior protection against rod abrasion.



CAB & BODY FITTINGS

INSTALLATION CALCULATION FOR AN 'EASY-LIFT' GAS SPRING



YOU WILL REQUIRE THE FOLLOWING DATA TO ENSURE CORRECT SELECTION OF THE 'EASY-LIFT' GAS SPRING:

- * STROKE 'A' (mm)
- * THE EXTENDED LENGTH 'E' (mm)
- * THE THRUST FORCE 'F1' (Newtons)
- * THE END CONNECTION METHODS
- * ESTABLISH LENGTH OF FLAP 'D' (mm)

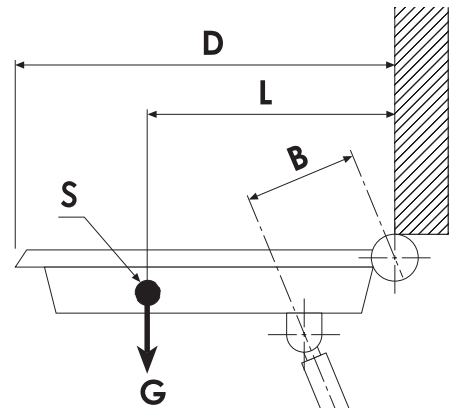
ESTABLISHING THRUST FORCE F1 (N)

$$F1 = \frac{G \times L}{B \times X} + K$$

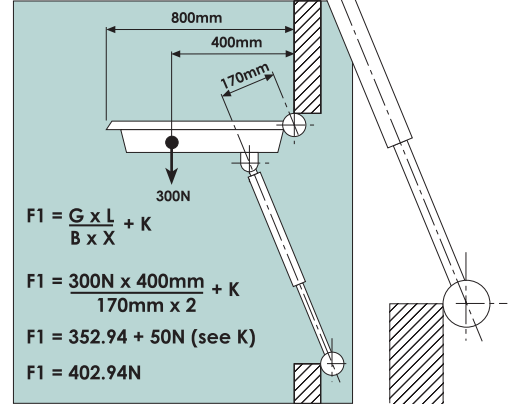
- S = CENTRE OF GRAVITY
- G = WEIGHT OF FLAP IN NEWTON (kg x 10)
- B = POWER ARM - corresponds to about 85% of required stroke 'A' (mm).
- L = DIMENSION FROM HINGE TO CENTRE OF GRAVITY - taking into consideration any uneven distribution of weight, i.e. locks, handles, end - cappings, etc.
- X = NUMBER OF SPRINGS - generally 2, one each side of flap.
- K = SAFETY FACTOR; F1 = UP TO 300N, ADD 10% (x 1.1)
F1 = OVER 300N, ADD 50N ONLY.

Note

Should you require assistance, please contact us. We are always prepared to give advice and help to determine which gas spring is suitable. We recommend that a sketch of your application is made available to us, providing as much information as possible. (See calculation example.)



FOR EXAMPLE:



OTHER OPTIONS TO CONSIDER WHEN CHOOSING AN 'EASY-LIFT' GAS SPRING

SPRING POWER

The theoretical extension force results from the filling pressure x the cross-sectional area of the piston rod. Through variation of both factors it is possible to supply Bansbach gas springs with any desired extension force. Our standard models are made from 50N to 5000N.

The extension force quoted is always related to the value of F1 measured at 20° ± 2°C with the piston in the downward position.

F1 = Extension force by extended piston rod.

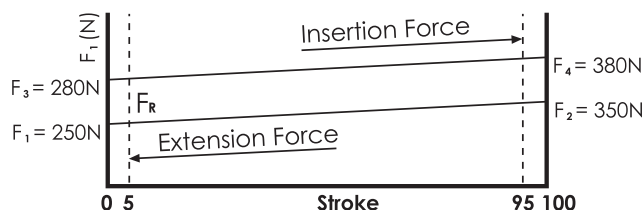
F2 = Extension force by drawn-in piston rod.

F3 = Insertion force by extended piston rod.

F4 = Insertion force by drawn-in piston rod.

FR = Friction force.

These values may be influenced through the gas volume, the oil quantity and through the quality of the guiding piece. Bansbach gas springs excel through their low friction and even increase of pressure. Through the combination of different nozzle borings and oil quantity, it is possible to control the push-out and push-in speed nearly at will.



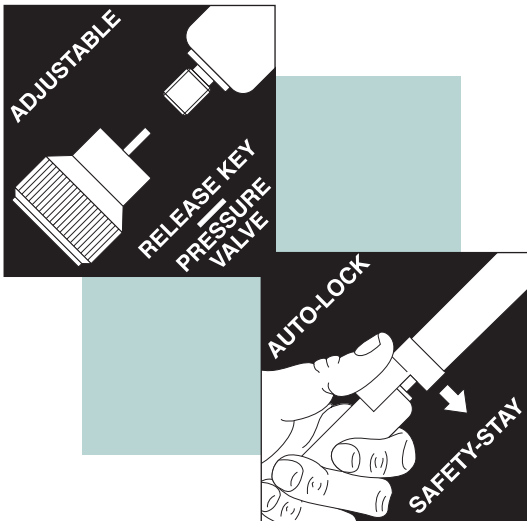
DAMPING

During manufacture, the damping can be varied to alter the speed at which the piston extends, or, to slow the piston as it approaches full extension. The different types are listed below:

0. Fast push-out and push-in speed, no damping action at the end of the travel.
1. Fast push-out and push-in speed, normal damping action at the end of the travel.
2. Fast push-out and push-in speed, strong damping at the end of the travel.
3. Normal push-out and push-in speed, no damping action at the end of the travel.
4. Normal push-out and push-in speed, normal damping action at the end of the travel.
5. Normal push-out and push-in speed, strong damping action at the end of the travel.
6. Slow push-out and push-in speed, no damping action at the end of the travel.
7. Slow push-out and push-in speed, normal damping action at the end of the travel.
8. Slow push-out and push-in speed, strong damping action at the end of the travel.

MANUFACTURING DIMENSIONAL CAPACITIES

PISTON Ø-CYLINDER Ø	6-15mm	8-19mm	8-22mm	10-22mm	10-28mm	12-28mm	14-28mm	20-40mm
PUSH-OUT FORCES	10-400N	30-700N	30-700N	50-1300N	50-1300N	100-1700N	150-2600N	200-5000N
STROKE LENGTHS	10-150mm	10-300mm	10-300mm	20-800mm	20-800mm	20-1000mm	20-1000mm	20-1000mm



PRESSURE RELEASE VALVE

Most standard type gas springs can be supplied with a release valve to enable the pressure to be released on site by means of a screw-in release key, which is particularly useful when trying samples on new applications. These can, if necessary, be re-pressurised by means of specialist equipment. Further details available on request.

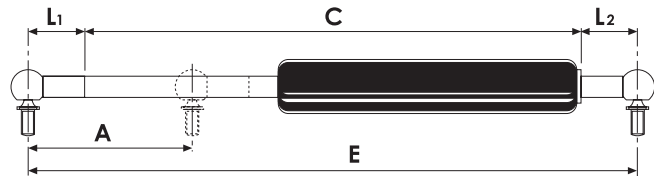
AUTO-LOCK, SAFETY STAY

The 'Auto-lock, safety stay' has a spring-action which automatically locks a gas spring in the extended position, thus, eliminating the need for an additional safety stay on applications where rigid locking of the flap is necessary. A simple press-action is all that is required to release the stay.

• ASSEMBLIES • ASSEMBLIES • ASSEMBLIES • ASSEMBLIES • ASSEMBLIES • ASSEMBLIES • ASSEMBLIES • ASSEMBLIES •

Ø6 mm PISTON, Ø15 mm CYLINDER
Pressure range = 10N to 400N

The complete assemblies listed are with the most popular end fittings. Alternatively, any combination of the end fittings shown can be supplied, but it is important to note that this will alter the overall length of the assembly. The extended length can be determined by adding the lengths of the fittings (Dims. L1 and L2) to the length of the base unit (Dim. C).

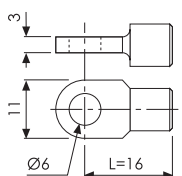


STROKE (A)	FIXING CENTRES (E)	F1 (NEWTONS)	COMPLETE ASSEMBLY NUMBER	COMPONENT REFERENCE		BASE LENGTH (C)	
				END FITTINGS			BASE UNIT NUMBER
				EYE-EYE	ELBOW-ELBOW		
60 mm	182 mm	30	1240/7301	1251/30	1260/7152	150 mm	
60 mm	194 mm	30	1240/7303	1252/48			
100 mm	298 mm	100	1240/7321	1251/30	1260/7154	266 mm	
100 mm	310 mm	100	1240/7323	1252/48			
100 mm	298 mm	180	1240/7341	1251/30	1260/7156	266 mm	
100 mm	310 mm	180	1240/7343	1252/48			

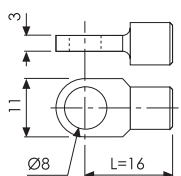
END FITTINGS

The internal thread of each end fitting matches that of the base unit, i.e. M5.

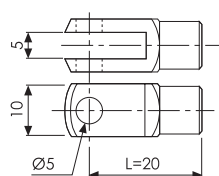
1251/30 - ALUM'M



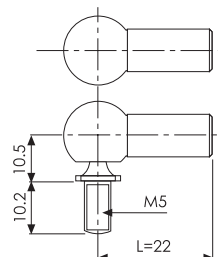
1251/32 - ALUM'M



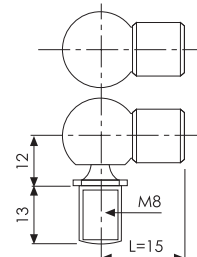
1253/58 - STEEL



1252/48 - STEEL



1252/50 - STEEL

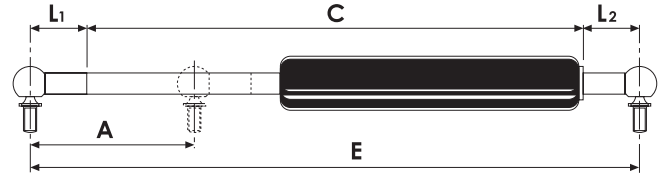


CAB & BODY FITTINGS

• ASSEMBLIES • ASSEMBLIES • ASSEMBLIES • ASSEMBLIES • ASSEMBLIES • ASSEMBLIES • ASSEMBLIES • ASSEMBLIES • ASSEMBLIES •

Ø8 mm PISTON, Ø19 mm CYLINDER
Pressure range = 30N to 700N

The complete assemblies listed are with the most popular end fittings. Alternatively, any combination of the end fittings shown can be supplied, but it is important to note that this will alter the overall length of the assembly. The extended length can be determined by adding the lengths of the fittings (Dims. L1 and L2) to the length of the base unit (Dim. C).



Bansbach: Gas Springs

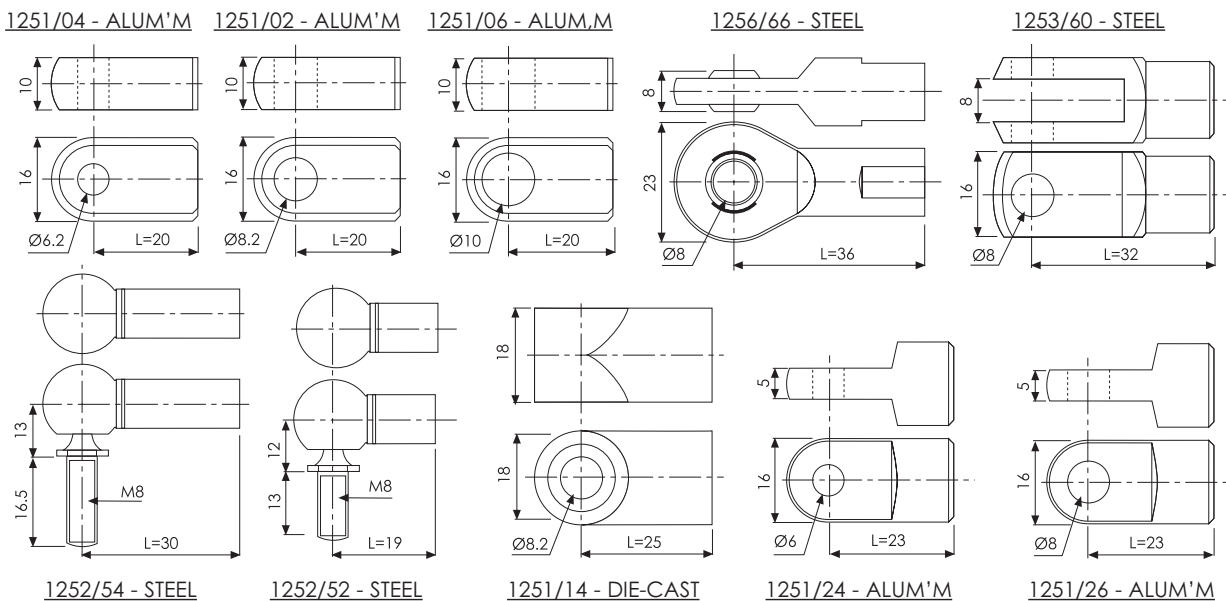
STROKE (A)	FIXING CENTRES (E)	F1 (NEWTONS)	COMPLETE ASSEMBLY NUMBER	COMPONENT REFERENCE			BASE LENGTH (C)
				END FITTINGS		BASE UNIT NUMBER	
				EYE-EYE	ELBOW-ELBOW		
65 mm	245 mm	250	1245/7361	1251/02		1260/7160	205 mm
65 mm	265 mm	250	1245/7363		1252/54		
80 mm	239 mm	120	1245/7381	1251/02		1260/7162	199 mm
80 mm	259 mm	120	1245/7383		1252/54		
95 mm	275 mm	350	1245/7401	1251/02		1260/7164	235 mm
95 mm	295 mm	350	1245/7403		1252/54		
100 mm	290 mm	150	1245/7421	1251/02		1260/7166	250 mm
100 mm	310 mm	150	1245/7423		1252/54		
100 mm	290 mm	200	1245/7441	1251/02		1260/7168	250 mm
100 mm	310 mm	200	1245/7443		1252/54		
100 mm	290 mm	400	1245/7461	1251/02		1260/7170	250 mm
100 mm	310 mm	400	1245/7463		1252/54		
100 mm	290 mm	500	1245/7481	1251/02		1260/7172	250 mm
100 mm	310 mm	500	1245/7483		1252/54		
100 mm	290 mm	600	1245/7501	1251/02		1260/7174	250 mm
100 mm	310 mm	600	1245/7503		1252/54		
100 mm	320 mm	200	1245/7521	1251/02		1260/7176	280 mm
100 mm	340 mm	200	1245/7523		1252/54		
100 mm	320 mm	300	1245/7541	1251/02		1260/7178	280 mm
100 mm	340 mm	300	1245/7543		1252/54		
100 mm	320 mm	500	1245/7561	1251/02		1260/7180	280 mm
100 mm	340 mm	500	1245/7563		1252/54		
100 mm	320 mm	600	1245/7581	1251/02		1260/7182	280 mm
100 mm	340 mm	600	1245/7583		1252/54		
100 mm	370 mm	370	1245/7601	1251/02		1260/7184	330 mm
100 mm	390 mm	370	1245/7603		1252/54		
150 mm	390 mm	400	1245/7621	1251/02		1260/7186	350 mm
150 mm	410 mm	400	1245/7623		1252/54		
150 mm	400 mm	250	1245/7641	1251/02		1260/7188	360 mm
150 mm	420 mm	250	1245/7643		1252/54		
150 mm	400 mm	350	1245/7661	1251/02		1260/7190	360 mm
150 mm	420 mm	350	1245/7663		1252/54		
150 mm	400 mm	400	1245/7681	1251/02		1260/7192	360 mm
150 mm	420 mm	400	1245/7683		1252/54		
150 mm	400 mm	550	1245/7701	1251/02		1260/7194	360 mm
150 mm	420 mm	550	1245/7703		1252/54		
150 mm	420 mm	200	1245/7721	1251/02		1260/7196	380 mm
150 mm	440 mm	200	1245/7723		1252/54		
150 mm	420 mm	600	1245/7741	1251/02		1260/7198	380 mm
150 mm	440 mm	600	1245/7743		1252/54		

continued...

CAB & BODY FITTINGS

STROKE (A)	FIXING CENTRES (E)	F1 (NEWTONS)	COMPLETE ASSEMBLY NUMBER	COMPONENT REFERENCE			BASE LENGTH (C)
				END FITTINGS		BASE UNIT NUMBER	
				EYE-EYE	ELBOW-ELBOW		
200 mm	500 mm	50	1245/7761	1251/02		1260/7200	460 mm
200 mm	520 mm	50	1245/7763		1252/54		
200 mm	500 mm	210	1245/7781	1251/02		1260/7202	460 mm
200 mm	520 mm	210	1245/7783		1252/54		
200 mm	500 mm	300	1245/7801	1251/02		1260/7204	460 mm
200 mm	520 mm	300	1245/7803		1252/54		
200 mm	500 mm	450	1245/7821	1251/02		1260/7206	460 mm
200 mm	520 mm	450	1245/7823		1252/54		
200 mm	500 mm	600	1245/7841	1251/02		1260/7208	460 mm
200 mm	520 mm	600	1245/7843		1252/54		
200 mm	500 mm	220	1245/7861	1251/02		1260/7210	460 mm
200 mm	520 mm	220	1245/7863		1252/54		
200 mm	500 mm	270	1245/7881	1251/02		1260/7212	460 mm
200 mm	520 mm	270	1245/7883		1252/54		
200 mm	520 mm	300	1245/7901	1251/02		1260/7214	480 mm
200 mm	540 mm	300	1245/7903		1252/54		
200 mm	520 mm	600	1245/7921	1251/02		1260/7216	480 mm
200 mm	540 mm	600	1245/7923		1252/54		
250 mm	580 mm	500	1245/7941	1251/02		1260/7218	540 mm
250 mm	600 mm	500	1245/7943		1252/54		
250 mm	600 mm	100	1245/7961	1251/02		1260/7220	560 mm
250 mm	620 mm	100	1245/7963		1252/54		
250 mm	600 mm	200	1245/7981	1251/02		1260/7222	560 mm
250 mm	620 mm	200	1245/7983		1252/54		
250 mm	600 mm	300	1245/8001	1251/02		1260/7224	560 mm
250 mm	620 mm	300	1245/8003		1252/54		
250 mm	600 mm	400	1245/8021	1251/02		1260/7226	560 mm
250 mm	620 mm	400	1245/8023		1252/54		
250 mm	600 mm	500	1245/8041	1251/02		1260/7228	560 mm
250 mm	620 mm	500	1245/8043		1252/54		

END FITTINGS

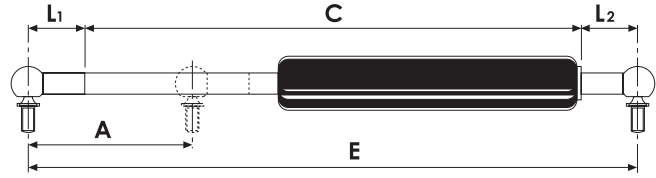


CAB & BODY FITTINGS

• ASSEMBLIES • ASSEMBLIES • ASSEMBLIES • ASSEMBLIES • ASSEMBLIES • ASSEMBLIES • ASSEMBLIES • ASSEMBLIES •

Ø10 mm PISTON, Ø22 mm CYLINDER
Pressure range = 50N to 1300N

The complete assemblies listed are with the most popular end fittings. Alternatively, any combination of the end fittings shown can be supplied, but it is important to note that this will alter the overall length of the assembly. The extended length can be determined by adding the lengths of the fittings (Dims. L1 and L2) to the length of the base unit (Dim. C).



STROKE (A)	FIXING CENTRES (E)	F1 (NEWTONS)	COMPLETE ASSEMBLY NUMBER	COMPONENT REFERENCE			BASE LENGTH (C)
				END FITTINGS		BASE UNIT NUMBER	
				EYE-EYE	ELBOW-ELBOW		
195 mm	490 mm	850	1247/8061	1251/02		1260/7236	450 mm
195 mm	510 mm	850	1247/8063		1252/54		
200 mm	500 mm	500	1247/8081	1251/02		1260/7238	460 mm
200 mm	520 mm	500	1247/8083		1252/54		
200 mm	500 mm	600	1247/8101	1251/02		1260/7240	460 mm
200 mm	520 mm	600	1247/8103		1252/54		
200 mm	500 mm	700	1247/8121	1251/02		1260/7242	460 mm
200 mm	520 mm	700	1247/8123		1252/54		
200 mm	500 mm	800	1247/8141	1251/02		1260/7244	460 mm
200 mm	520 mm	800	1247/8143		1252/54		
200 mm	500 mm	1000	1247/8161	1251/02		1260/7246	460 mm
200 mm	520 mm	1000	1247/8163		1252/54		
200 mm	500 mm	1200	1247/8181	1251/02		1260/7248	460 mm
200 mm	520 mm	1200	1247/8183		1252/54		
200 mm	519 mm	900	1247/8201	1251/02		1260/7250	479 mm
200 mm	539 mm	900	1247/8203		1252/54		
300 mm	700 mm	800	1247/8221	1251/02		1260/7252	660 mm
300 mm	720 mm	800	1247/8223		1252/54		
300 mm	750 mm	600	1247/8241	1251/02		1260/7254	710 mm
300 mm	770 mm	600	1247/8243		1252/54		
350 mm	800 mm	600	1247/8261	1251/02		1260/7256	760 mm
350 mm	820 mm	600	1247/8263		1252/54		
350 mm	800 mm	800	1247/8281	1251/02		1260/7258	760 mm
350 mm	820 mm	800	1247/8283		1252/54		
350 mm	800 mm	1000	1247/8291	1251/02		1260/7259	760 mm
350 mm	820 mm	1000	1247/8293		1252/54		
400 mm	900 mm	250	1247/8301	1251/02		1260/7260	860 mm
400 mm	920 mm	250	1247/8303		1252/54		

END FITTINGS

See page b5 for complete listing.

• ASSEMBLIES • ASSEMBLIES • ASSEMBLIES • ASSEMBLIES • ASSEMBLIES • ASSEMBLIES • ASSEMBLIES • ASSEMBLIES •

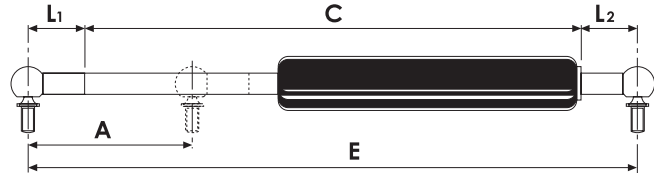
1249: Ø12 mm PISTON, Ø28 mm CYLINDER

Pressure range = 100N to 1700N

1250: Ø14 mm PISTON, Ø28 mm CYLINDER

Pressure range = 150N to 2600N

The complete assemblies listed are with the most popular end fittings. Alternatively, any combination of the end fittings shown can be supplied, but it is important to note that this will alter the overall length of the assembly. The extended length can be determined by adding the lengths of the fittings (Dims. L1 and L2) to the length of the base unit (Dim. C).

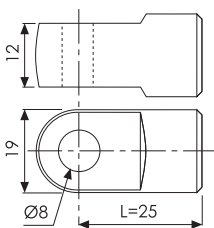


STROKE (A)	FIXING CENTRES (E)	F1 (NEWTONS)	COMPLETE ASSEMBLY NUMBER	COMPONENT REFERENCE			BASE LENGTH (C)
				END FITTINGS		BASE UNIT NUMBER	
				EYE-EYE	ELBOW-ELBOW		
300 mm	750 mm	400	1249/8321	1251/34		1260/7268	700 mm
300 mm	770 mm	400	1249/8323		1252/56		
460 mm	1040 mm	800	1249/8341	1251/34		1260/7270	990 mm
460 mm	1060 mm	800	1249/8343		1252/56		
500 mm	1100 mm	1200	1249/8361	1251/34		1260/7272	1050 mm
500 mm	1120 mm	1200	1249/8363		1252/56		
100 mm	315 mm	1800	1250/8361	1251/34		1260/7276	265 mm
100 mm	335 mm	1800	1250/8363		1252/56		
100 mm	335 mm	1900	1250/8371	1251/34		1260/7277	285 mm
100 mm	355 mm	1900	1250/8373		1252/56		
100 mm	400 mm	2100	1250/8381	1251/34		1260/7278	350 mm
100 mm	420 mm	2100	1250/8383		1252/56		
200 mm	530 mm	1800	1250/8401	1251/34		1260/7280	480 mm
200 mm	550 mm	1800	1250/8403		1252/56		
250 mm	600 mm	1500	1250/8421	1251/34		1260/7282	550 mm
250 mm	620 mm	1500	1250/8423		1252/56		
300 mm	730 mm	1200	1250/8441	1251/34		1260/7284	680 mm
300 mm	750 mm	1200	1250/8443		1252/56		
500 mm	1115 mm	1000	1250/8461	1251/34		1260/7286	1065 mm
500 mm	1135 mm	1000	1250/8463		1252/56		
500 mm	1115 mm	2000	1250/8481	1251/34		1260/7288	1065 mm
500 mm	1135 mm	2000	1250/8483		1252/56		
500 mm	1115 mm	2500	1250/8501	1251/34		1260/7290	1065 mm
500 mm	1135 mm	2500	1250/8503		1252/56		

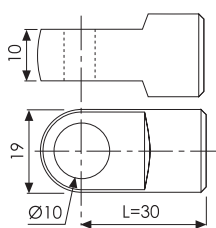
END FITTINGS

The internal thread of each end fitting matches that of the base unit, ie. M10.

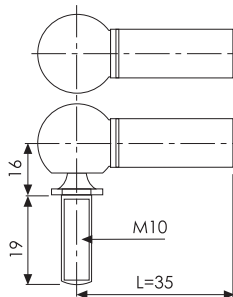
1251/34 - ALUM'M



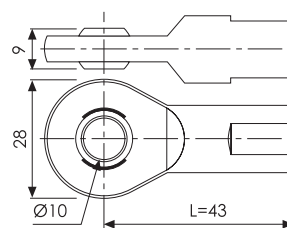
1251/44 - ALUM'M



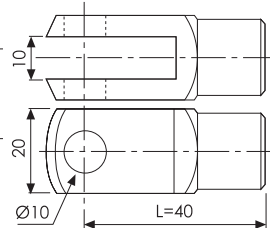
1252/56 - STEEL



1256/68 - STEEL



1253/62 - STEEL



CAB & BODY FITTINGS

ATTACHMENT BRACKET

Ø7.8mm shaft on a flat plate.
Zinc plated, mild steel.

	A	B	C	D	E	F	G	H
1258/01	Weight 60g/2.1oz							
METRIC (mm)	45.0	44.0	3.00	35.0	31.0	7.80	6.20	
IMPERIAL (ins)	1.77	1.73	0.12	1.38	1.22	0.31	0.24	

1258/021 Ø8mm Push fit fixing cap



ATTACHMENT BRACKET

Ø7.8mm shaft on an angled plate.
Zinc plated, mild steel.
Supplied with 8mm push fit fixing cap.

	A	B	C	D	E	F	G	H
1258/02	Weight 53g/1.9oz							
METRIC (mm)	45.0	24.0	3.00	15.0	24.0	7.80	6.20	25.0
IMPERIAL (ins)	1.77	0.95	0.12	0.59	0.95	0.31	0.24	0.98

1258/021 Ø8mm Push fit fixing cap



ATTACHMENT BRACKET

Ø10 mm ball on an angled plate.
Zinc plated, mild steel.

	A	B	C	D	E	F	G	H
1258/03	Weight 48g/1.7oz							
METRIC (mm)	45.0	24.0	3.00	14.5	14.5	10.0	6.20	25.0
IMPERIAL (ins)	1.77	0.95	0.12	0.57	0.57	0.39	0.24	0.98





				<p>ATTACHMENT BRACKET</p> <p>Ø10 mm ball on a flat plate. Zinc plated, mild steel.</p>							
				A	B	C	D	E	F	G	H
1258/04				Weight 54g/1.9oz							
METRIC (mm)				45.0	44.0	3.00	35.0	21.0	10.0	6.20	
IMPERIAL (ins)				1.77	1.73	0.12	1.38	0.83	0.39	0.24	



				<p>ATTACHMENT BRACKET</p> <p>304 stainless steel. Complete with clevis pin & retaining clip.</p>							
				A	B	C	D	E	F	G	H
1258/904				Weight 60g/2.1oz							
METRIC (mm)				69.0	53.0	25.8	2.50	17.0	18.0	13.0	6.50
IMPERIAL (ins)				2.72	2.09	1.02	0.10	0.67	0.71	0.51	0.26



				<p>ELBOW JOINT</p> <p>Black plastic ball socket with spring steel ball retainer. Zinc plated steel ball & bolt.</p>							
				A	B	C	D	E	F	G	H
1258/05				Ø10mm ball & bolt				Weight 12g/0.4oz			
1252/55				Ø10 mm ball socket				Weight 8g/0.3oz			
METRIC (mm)				10.0	M8	13.0	12.0	M8	9.00	18.5	
IMPERIAL (ins)				0.39		0.51	0.47		0.35	0.73	



versatile design solutions
for precise, controlled
movement

Bansbach
easylift

Easylift Lockable Gas Springs

Easylift lockable gas springs can be locked anywhere along the whole stroke. When the release pin is pushed, the piston valve opens allowing gas or oil to flow through the piston which in turn allows free movement of the piston rod along the length of the cylinder. When the piston rod reaches its desired position the release pin is released to close the piston valve and lock the piston rod rigidly in place.

Direction of movement (compression or traction), extension forces, and locking forces are all adjustable during manufacture offering versatile design solutions when designing a diverse range of applications.

An extensive range of actuation solutions are available ranging from standard mechanical levers and bowden wire arrangements to complex hydraulic systems with smooth push button control.

Typical applications include aerospace, industrial, medical, marine, rehabilitation, leisure, furniture as well as commercial vehicle applications.

Visit www.albert-jagger.co.uk for further details or alternatively contact us for an easymotion brochure.



versatile design solutions
for precise, controlled
movement

Bansbach
easyERF

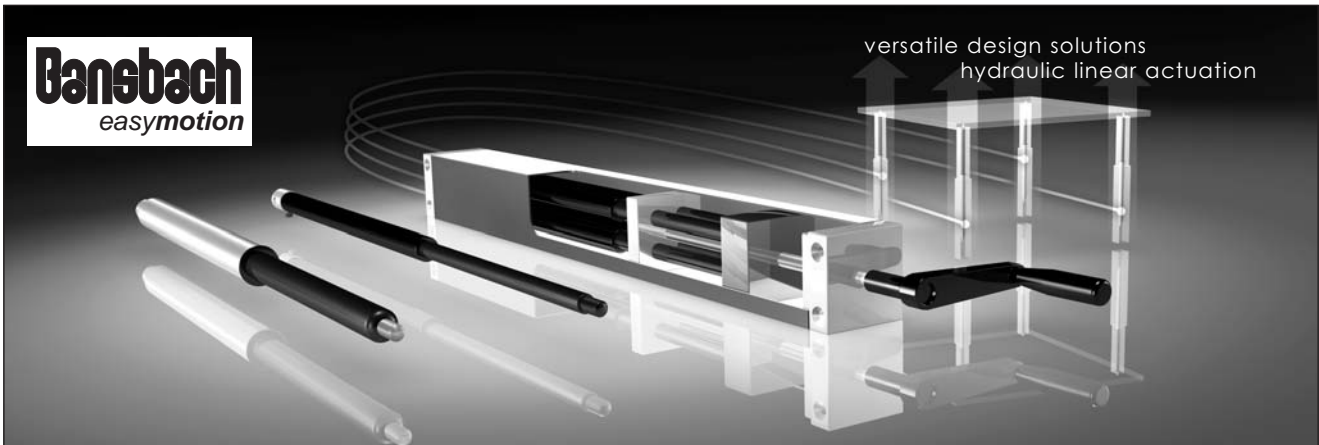
The intelligent damper: easyERF

Electronic adjustable dampers with integrated electrorheological technology.

This new innovative technology from Banbach offers electronically adjustable dampers with reaction times measured in milliseconds. Highly energy efficient with low power consumption (24 volt DC) this is a silent system with no 'laminar flow' or 'whistling' noises and with no moveable valve parts ensures maintenance free operation.

Continuous adjustment of the damping action can be achieved by controlling the digital signal via an electronic input signal - either with PWM-standard or with 0 - 4 V analog signal. SPS is possible with specific modifications.

Visit www.albert-jagger.co.uk for further details or alternatively contact us for an easyERF brochure.



Easymotion - Hydraulic Linear Actuation

An alternative to the linear adjustment with Bansbach gas springs is the Easymotion Hydraulic Linear Actuation system which controls multiple adjustment cylinders synchronously. This is achieved by simultaneously controlling each cylinder separately. If light or heavy, easymotion can be fitted on any application and can be customised to fit individual needs - even if on multiple legs. Numerous Bansbach gas spring components are used in the production of the easymotion, guaranteeing quality and reliability.

The easymotion system consists of a hydraulic pump, adjustment cylinders and the tubes for connecting each component. The system can be operated either by a manual crank or by an electrical motor.

The easymotion system offers significant benefits of precise and reliable movement control in a variety of application areas including furniture (workbenches, counters, tables), medical (hospital beds, lab benches) and rehabilitation equipment (massage tables, exercise equipment).

Visit www.albert-jagger.co.uk for further details or alternatively contact us for an easymotion brochure.



furniture



hands free



medical



components



workbench