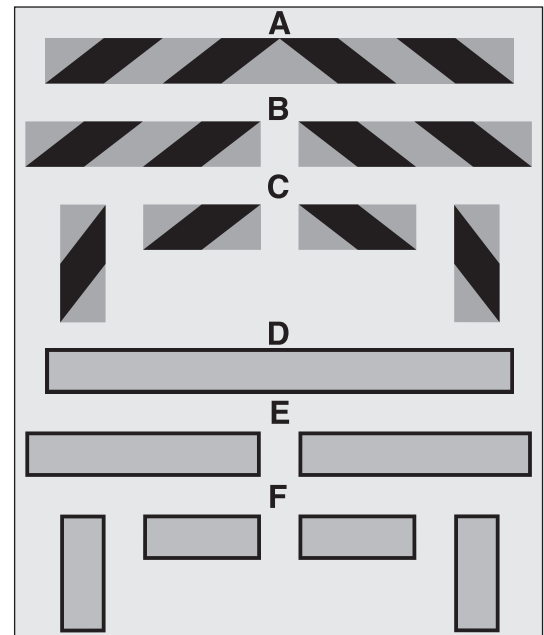
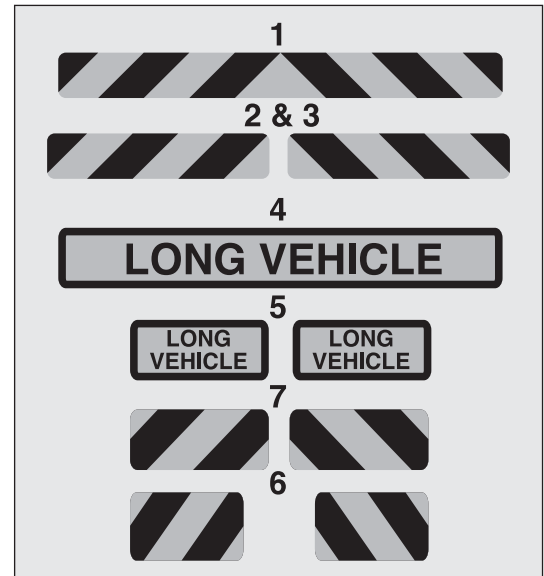


REAR MARKER PLATES	
	Red fluorescent & yellow reflective stripes. Conforms to BSAU 152
4811/001	Type 1-single 1400mm (55.125") x 140mm (5.5")
4812/001	Type 2 & 3-pairs 699mm (27.5") x 140mm (5.5")
4813/001	Type 4-single 1264mm (49.76") x 251mm (9.875") Printed "long vehicle"
4814/001	Type 5-pairs 533mm (21") x 254mm (10") Printed "long vehicle"
4815/001	Type 7-pairs 419mm (16.5") x 235mm (9.25")
4815/002	Type 6-pairs 375mm (14.75") x 267mm (10.5")

IMPORTANT NOTE: The above marker boards can only be used on trailers manufactured before October 1995 and on trucks registered before April 1996.

ECE 70 MARKER BOARDS	
	Orange fluorescent tape and yellow reflective background, on an aluminium back-plate. Complies with the Road Vehicles Lighting Regulations 1994.
4820/261	Type A, Chevron. Single. 1130 mm (44.5") x 140 mm (5.5")
4820/262	Type B, Chevron. Pair. 565 mm (22.25") x 140 mm (5.5")
4820/263	Type C, Chevron. Set of four. 283 mm (11.125") x 140 mm (5.5")
4820/264	Type D, Plain. Single. 1130 mm (44.5") x 200 mm (7.9")
4820/265	Type E, Plain. Pair. 565 mm (22.25") x 200 mm (7.9")
4820/266	Type F, Plain. Set of four. 283 mm (11.125") x 200 mm (7.9")

4820/001	SCHOOL BUS SIGNS To comply with the Road Vehicle Regulations 1994. Black profile with a yellow reflective background on a PVC back-board. Kit includes: 1 Front board - 295 mm (11.6") square. 1 Rear board - 455 mm (18") square. 8 Suction pads.
----------	---

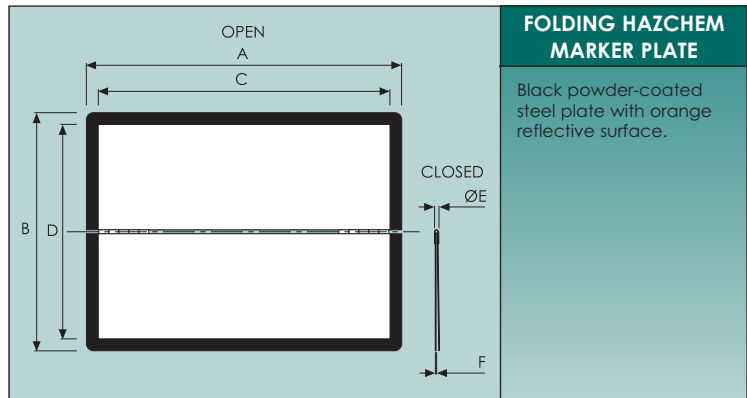




HAZCHEM MARKER PLATE

Steel back plate with reversible board (400mm x 300mm). Orange reflective face & black reverse.

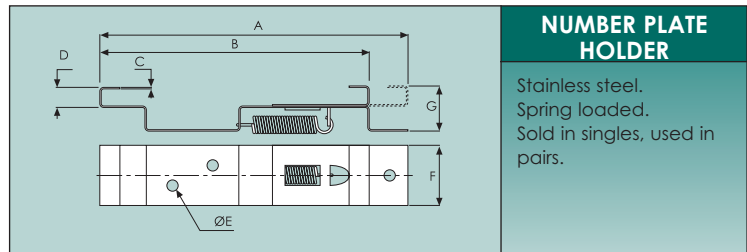
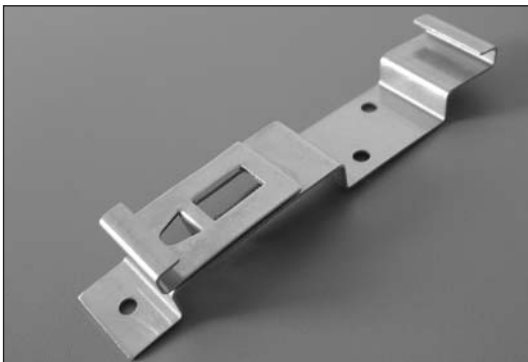
4816/001	Complete assembly	Weight 1.02kg/2.25lb
4816/002	Plate holder	Weight 660g/1.5lb
4816/003	Marker plate	Weight 360g/12.7oz



FOLDING HAZCHEM MARKER PLATE

Black powder-coated steel plate with orange reflective surface.

	A	B	C	D	E	F	G	H
4816/004	Weight 940g/2.1lb							
METRIC (mm)	400	300	376	286	6.00	1.50		
IMPERIAL (ins)	15.75	11.81	14.8	11.3	0.24	0.06		



NUMBER PLATE HOLDER

Stainless steel. Spring loaded. Sold in singles, used in pairs.

	A	B	C	D	E	F	G	H
5339/001	Weight 40g/1.4oz							
METRIC (mm)	122	108	1.00	7.00	4.40	24.0	18.0	
IMPERIAL (ins)	4.80	4.25	0.04	0.28	0.17	0.95	0.71	