



**'BUT-ROLL' ROLLER BUFFERS**

Horizontal buffer with 4 rollers held captive in a galvanised steel bracket.  
Replacement roller: 2515/0402.

	A	B	C	D	E	F	G	H
<b>2515/0400</b>	<b>Weight 11.3kg/25lb</b>							
METRIC (mm)	395	116	100	118	68	100	13	
IMPERIAL (ins)	15.6	4.57	3.94	4.65	2.68	3.94	0.51	



**'BUT-ROLL' ROLLER BUFFERS**

Horizontal buffer with 2 rollers held captive in a galvanised steel bracket.  
Replacement roller: 2515/0402.

	A	B	C	D	E	F	G	H
<b>2515/0401</b>	<b>Weight 6.2kg/13.7lb</b>							
METRIC (mm)	216	116	100	118	68	100	13	
IMPERIAL (ins)	8.50	4.57	3.94	4.65	2.68	3.94	0.51	



**'BUT-ROLL' ROLLER BUFFERS**

Slimline design. Vertical buffer with 3 rollers held captive in a galvanised steel bracket.  
Replacement roller: 2515/1402.

	A	B	C	D	E	F	G	H
<b>2515/1403</b>	<b>Weight 9.8kg/21.6lb</b>							
METRIC (mm)	344	80	104	118	70	100	13	65
IMPERIAL (ins)	13.5	3.15	4.10	4.65	2.76	3.94	0.51	2.56



**'BUT-ROLL' ROLLER BUFFERS**

Slimline design. Vertical buffer with 2 rollers held captive in a galvanised steel bracket.  
Replacement roller: 2515/1402.

	A	B	C	D	E	F	G	H
<b>2515/1404</b>	<b>Weight 6.6kg/14.6lb</b>							
METRIC (mm)	234	80	104	118	70	100	13	65
IMPERIAL (ins)	9.21	3.15	4.10	4.65	2.76	3.94	0.51	2.56

Continued overleaf . . .

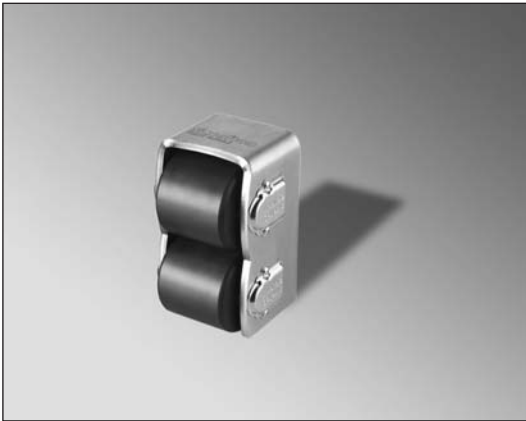
## Rubber Buffers

		A	B	C	D	E	F	G	H
<b>SPRING LOADED ROLLER BUFFERS</b>									
Horizontal buffers with galvanised steel bracket & single polypropylene roller. Spring loaded roller spindle for greater shock absorption.									
<b>2516/001</b>	<b>TSL Roller Buffer</b>	<b>Weight 2.3kg/5.1lb</b>							
METRIC (mm)		125	80.0	80.0	98.0	67	8.00		
IMPERIAL (ins)		4.92	3.15	3.15	3.86	2.64	0.32		
<b>2516/002</b>	<b>TSR Roller Buffer</b>	<b>Weight 2.8kg/6.2lb</b>							
METRIC (mm)		120	95.0	95.0	98.0	82.0	8.00		
IMPERIAL (ins)		4.72	3.74	3.74	3.86	3.23	0.32		
<b>2516/011</b>	<b>Replacement spring pack: 4 x springs, 4 x screws, 2 x cover plates</b>								
<b>2516/012</b>	<b>Replacement spindle for TSL &amp; TSR</b>								
<b>2516/015</b>	<b>Replacement roller for TSL</b>								
<b>2516/016</b>	<b>Replacement roller for TSR &amp; TDR</b>								



		A	B	C	D	E	F	G	H
<b>SPRING LOADED ROLLER BUFFERS</b>									
Horizontal buffers with galvanised steel bracket & twin polypropylene rollers. Spring loaded roller spindle for greater shock absorption.									
<b>2516/003</b>	<b>TDR Roller Buffer</b>	<b>Weight 4.7kg/10.4lb</b>							
METRIC (mm)		220	95.0	95.0	98.0	82.0	8.00		
IMPERIAL (ins)		8.66	3.74	3.74	3.86	3.23	0.32		
<b>2516/004</b>	<b>TDX roller Buffer</b>	<b>Weight 6.7kg/14.8lb</b>							
METRIC (mm)		310	95.0	95.0	138	82.0	8.00		
IMPERIAL (ins)		12.2	3.74	3.74	5.43	3.23	0.32		
<b>2516/011</b>	<b>Replacement spring pack: 4 x springs, 4 x screws, 2 x cover plates</b>								
<b>2516/013</b>	<b>Replacement spindle for TDR</b>								
<b>2516/014</b>	<b>Replacement spindle for TDX</b>								
<b>2516/016</b>	<b>Replacement roller for TSR &amp; TDR</b>								
<b>2516/017</b>	<b>Replacement roller for TDX</b>								





		SPRING LOADED ROLLER BUFFERS				SPRING LOADED ROLLER BUFFERS			
						Vertical buffer with galvanised steel bracket & polypropylene rollers. Spring loaded roller spindles for greater shock absorption.			
		A	B	C	D	E	F	G	H
<b>2516/022</b>	<b>Roller Buffer</b>	<b>Weight 4.5kg/4.4lb</b>							
	METRIC (mm)	100	90.0	180	75.0	80.0	8.00		
	IMPERIAL (ins)	3.94	3.54	7.09	2.95	3.15	0.32		
<b>2516/011</b>	<b>Replacement spring pack:</b>								
	4 x springs, 4 x screws, 2 x cover plates								
<b>2516/018</b>	<b>Replacement spindle</b>								
<b>2516/019</b>	<b>Replacement roller</b>								



		SPRING LOADED ROLLER BUFFERS				SPRING LOADED ROLLER BUFFERS			
						Vertical buffer with galvanised steel bracket & polypropylene rollers. Spring loaded roller spindles for greater shock absorption.			
		A	B	C	D	E	F	G	H
<b>2516/033</b>	<b>Roller Buffer</b>	<b>Weight 4.2kg/9.3lb</b>							
	METRIC (mm)	100	90.0	265	75.0	80.0	8.00		
	IMPERIAL (ins)	3.94	3.54	10.4	2.95	3.15	0.32		
<b>2516/011</b>	<b>Replacement spring pack:</b>								
	4 x springs, 4 x screws, 2 x cover plates								
<b>2516/018</b>	<b>Replacement spindle</b>								
<b>2516/019</b>	<b>Replacement roller</b>								