

# Horsebox

## PRODUCT CATALOGUE



With 135 year's experience supplying vehicle hardware, Albert Jagger's relationship with the horsebox sector spans over the years. We work with leading designers and engineers to provide our customers with an unbeatable range of products that enhance the safety, usability, and efficiency of their horsebox.

From building a new vehicle to sourcing replacement parts, you'll find everything you need with our wide range of quality horsebox fittings and components. All our products are designed to ensure quality and reliability, with the well-being, safety and comfort of both horse and driver at the forefront.

Supply Without Compromise

Transport Hardware

## ANTILUCE FASTENERS

M8 x 18mm, Bolt On  
3285/001



Finish Zinc Plated Steel  
Boss 12mm  
Panel Thickness 6mm  
Shank Diameter 8mm  
Shank Length 21mm  
Thread M8  
Thread Length 18mm  
Feature Nut & 2 Washers

M8 x 22mm, Bolt On  
3330/095



Finish 304 Stainless Steel  
Boss 12mm  
Panel Thickness 5mm  
Shank Diameter 8mm  
Shank Length 25mm  
Thread M8  
Thread Length 22mm  
Feature Nut & 2 Washers

M12 x 65mm, Bolt On  
3325/001



Finish Zinc Plated Steel  
Boss 19mm  
Panel Thickness 6mm  
Shank Diameter 12mm  
Shank Length 76mm  
Thread M12  
Thread Length 65mm

M12 x 22mm, Bolt On  
3330/061



Finish 304 Stainless Steel  
Boss 19mm  
Panel Thickness 6mm  
Shank Diameter 12mm  
Shank Length 25mm  
Thread M12  
Thread Length 22mm

M12 x 28mm, Bolt On  
3275/001



Finish Zinc Plated Steel  
Boss 19mm  
Panel Thickness 6mm  
Shank Diameter 12mm  
Shank Length 33mm  
Thread M12  
Thread Length 28mm

13 x 13mm, Weld On  
3330/047



Finish 304 Stainless Steel  
Boss 19mm  
Panel Thickness 7mm  
Shank Diameter 13mm  
Shank Length 13mm

12 x 12mm, Weld On  
3232/001



Finish Zinc Plated  
Boss 19mm  
Panel Thickness 6mm  
Shank Diameter 12mm  
Shank Length 12mm

M12 x 22mm, Bolt On  
3263/001



Finish Zinc Plated Steel  
Boss 19mm  
Panel Thickness 6mm  
Shank Diameter 12mm  
Shank Length 25mm  
Thread M12  
Thread Length 22mm

Antiluce on plate  
3330/874



Finish Stainless Steel  
Boss 18mm  
Panel Thickness 6mm  
Plate Size 89.5 x 40 x 5mm

## BUDGET LOCKS

Universal - 85mm  
0748/001



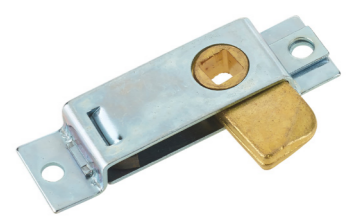
Material Mild Steel  
Finish Z/P Clear Passivated  
Type Universal  
Length 22mm  
Width 85mm  
Thickness 8mm  
Tounge Zinc Plated  
Fixing 6.5mm

Universal - 125.5mm  
0750/002



Material Mild Steel  
Finish Z/P Clear Passivated  
Type Universal  
Length 27mm  
Width 125.5mm  
Thickness 13mm  
Tounge Malleable Iron  
Fixing 5mm

Left Hand - 80.5mm  
0746/003



Material Mild Steel  
Finish Z/P Clear Passivated  
Type Left Hand  
Length 22.5mm  
Width 80.5mm  
Thickness 11.5mm  
Tounge Brass  
Fixing 5.5mm

Universal - 83mm  
5589/017



Material Acetal Copolymer  
Finish Black  
Length 22mm  
Width 83mm  
Thickness 14mm  
Fixing 7mm

Escutcheon, Hinged Lid  
0130/003



Material Polyamide  
Finish Black  
Length 41.5mm  
Width 51mm  
Thickness 8.5mm  
Access Hole 16mm  
Fixing 3.5mm

Escutcheon, Hinged Lid  
0130/001



Material Zinc Die-Cast  
Finish Polished Chrome  
Length 27mm  
Width 27mm  
Thickness 7mm  
Access Hole 12mm  
Fixing 3mm

125mm Tee Key  
2257/004



Material Mild Steel  
Finish Zinc Plated  
Length 125mm  
Width 70mm  
Square 45 x 6-9mm

83mm Tee Key  
2257/001



Material Mild Steel  
Finish Zinc Plated  
Length 83mm  
Width 61mm  
Square 45 x 6-9mm

Striker Plate  
0779/001



Material Mild Steel  
Finish Z/P Clear Passivated  
Length 18mm  
Width 77mm  
Thickness 1.5mm  
Square 6.5mm  
Fixing 5.5mm

## CAMERA SYSTEMS

Camera System 7" Monitor  
9933/070



Voltage	12V
IP Rating	IP69K
Viewing Angle	180
IR Lights	18 LED's
Mounting	U Bracket
Connection	4 Pin
Cable Length	20m
Dimensions	90 x 80 x 50mm

Heavy Duty Rear Camera - PAL  
9933/080



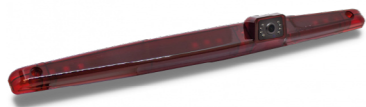
Voltage	12V DC
IP Rating	IP69K
Viewing Angle	130
IR Lights	18 LED's
Mounting	U Bracket
Connection	4 Pin
Cable Length	20m
Dimensions	90 x 80 x 50mm

Camera Extension Lead  
9911/2222



Connection	4 Pin
Length	20m

Universal Brake Light Camera  
9933/095



Voltage	12V DC
IP Rating	IP68
Viewing Angle	170
IR Lights	8 LED's
Connection	4 Pin
Cable Length	15m
Dimensions	456 x 35 x 42mm
Features	Parking Lines, Switchable

Camera & Clip On Mirror Monitor  
9933/060



Voltage	12V
IP Rating	IP69K
Viewing Angle	120
IR Lights	18 LED's
Mounting	U Bracket
Connection	4 Pin
Cable Length	20m
Dimensions	250 x 118 x 30mm

Temperature & Humidity Sensor  
9933/090



Temperature Range	-40 - 65°C
Humidity Range	0-100%RH
Connection	Bluetooth 5.0
App Control	Yes
Battery Life	365 Days
Dimensions	40x40x30mm

Dash Cam- 720P  
9933/720



Display	2.5" TFT LCD
Camera	3.0MP, A+ Grade 6G Lens
Viewing Angle	120° Wide Angle
Resolution	Real HD 720P

Dash Cam- 1080P  
9933/1080



Display	3.0" TFT LCD
Camera	12.0MP, A+ Grade Super Vision 6G Lens
Viewing Angle	170° Ultra-Wide Angle
Resolution	Real FHD 1080P

Brake Light Camera  
9911/PSC14



Image Sensor	1/3" Colour Super CMOS
Resolution	700TV Lines
IR LEDs	8
IR Distance	10m
Waterproof	IP68
Suitable for	Mercedes Sprinter 07 - Present Day VW Crafter 06-17

## COMPRESSION LATCHES

1-14mm Grip, Black, Locking  
3805/BL14



Material	Zinc Die Cast
Finish	Black
Type	Locking
Keys	Keyed Alike
Length	109mm
Width	50mm
Grip	1-14mm

29-45mm Grip, Black, Keyed-Alike  
3805/BL45



Material	Zinc Die Cast
Finish	Black
Type	Locking
Keys	Keyed Alike
Length	109mm
Width	50mm
Grip	29-45mm

29-45mm Grip, Black, Mixed Keys  
3805/BL45M



Material	Zinc Die Cast
Finish	Black
Type	Locking
Keys	Mixed Keys
Length	109mm
Width	50mm
Grip	29-45mm

1-25mm Grip, Black, Non-Locking  
3802/BN25FT



Material	Zinc Die Cast
Finish	Black
Type	Non-Locking
Length	93mm
Width	34mm
Grip	1-25mm

1-24mm Grip, Black, Keyed-Alike  
3802/BL24



Material	Zinc Die Cast
Finish	Black
Type	Locking
Keys	Keyed-Alike
Length	109mm
Width	33.5mm
Grip	1-24mm

1-24mm Grip, Chrome, Keyed-Alike  
3802/CL24



Material	Zinc Die Cast
Finish	Chrome
Type	Locking
Keys	Keyed-Alike
Length	109mm
Width	33.5mm
Grip	1-24mm

1-24mm Grip, Chrome, Non-Locking  
3802/CN24



Material	Zinc Die Cast
Finish	Chrome
Type	Non-Locking
Length	109mm
Width	33.5mm
Grip	1-24mm

Recessed Vector T  
9850/275021-06-S1



Material	Glass Filled Nylon
Finish	Black
Type	Locking
Keys	Keyed-Alike
Length	131mm
Width	120mm
Thickness	65mm
Fixing	5.5mm

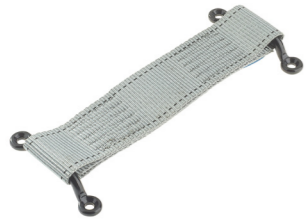
Universal Compression Latch  
9530/0631



Material	Zinc Alloy
Finish	Black Powder Coated
Type	Locking
Length	85mm
Width	40mm
Grip	16-26mm

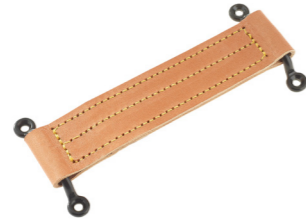
## DOOR CHECK STRAPS & OVERCENTRE LOCKS

**Nylon Webbing Check Strap  
4232/001**



**Material** Nylon Webbing  
**Colour** Grey  
**Length** 208mm  
**Width** 44mm  
**Depth** 4mm

**Leather Check Strap  
4279/001**



**Material** Leather  
**Colour** Brown  
**Length** 203mm  
**Width** 44mm  
**Depth** 6mm

**Fastener Bolt  
9827/60432**



**Material** Mild Steel  
**Colour** Galvanised  
**Length** 218mm  
**Width** 91mm  
**Fixing** 4 x 9mm

**702 Series Locking, 107-122mm  
9100/52070**



**Material** Mild Steel  
**Finish** Z/P, Clear Passivated  
**Type** Locking  
**Length** 50mm  
**Width** 32mm  
**Overall Length** 107-122mm  
**Adjustment** 15mm  
**Capacity** 300kg / 660lbs  
**Fixing** 5.5mm

**701 Series Locking, 82-88mm  
9100/52012**



**Material** Mild Steel  
**Finish** Z/P, Clear Passivated  
**Type** Locking  
**Length** 37mm  
**Width** 16mm  
**Overall Length** 82-88mm  
**Adjustment** 6mm  
**Capacity** 100kg / 220lbs  
**Fixing** 4.5mm

**703 Series Locking, 149-164mm  
9100/52091**



**Material** Mild Steel  
**Finish** Z/P, Clear Passivated  
**Type** Locking  
**Length** 60mm  
**Width** 40mm  
**Overall Length** 149-164mm  
**Adjustment** 15mm  
**Capacity** 500kg / 1101lbs  
**Fixing** 5.5mm

**41C Series Vertical Catch Plate  
9100/522831**



**Material** Mild Steel  
**Finish** Z/P, Clear Passivated  
**Type** Vertical  
**Length** 32.5mm  
**Width** 45mm  
**Fixing** 5.5mm

**30C Series Vertical Catch Plate  
9100/522631**



**Material** Mild Steel  
**Finish** Z/P, Clear Passivated  
**Type** Vertical  
**Length** 20mm  
**Width** 24mm  
**Fixing** 4mm

**31C Series Vertical Catch Plate  
9100/522731**



**Material** Mild Steel  
**Finish** Z/P, Clear Passivated  
**Type** Vertical  
**Length** 23mm  
**Width** 30.5mm  
**Fixing** 5.5mm

## DOOR HANDLES

**Pop Up T Handle - Left Hand  
9500/12466-06**



**Material** Mild Steel  
**Finish** Black Powder Coated  
**Type** Locking, Keyed Alike  
**Length** 108mm  
**Width** 34mm  
**Thickness** 14mm  
**Square** 45 x 8mm

**Recessed Tee Handle  
6212/0021**



**Material** Mild Steel  
**Finish** Black Powder Coated  
**Type** Locking, Keyed Alike  
**Length** 127mm  
**Width** 126.5mm  
**Thickness** 22mm  
**Fixing** 5.5mm Countersunk

**Recessed Lever Handle  
4212/707**



**Material** Mild Steel  
**Finish** Black Powder Coated  
**Type** Locking, Keyed-Alike  
**Length** 165mm  
**Width** 165mm  
**Thickness** 20mm  
**Fixing** 5mm Countersunk

**Chrome T Handle  
5224/002**



**Material** Mild Steel  
**Finish** Chrome Plated  
**Type** Locking, Keyed Alike  
**Length** 101mm  
**Width** 24mm  
**Thickness** 45mm  
**Square** 100 x 8mm

**Locking Chrome Lever Handle  
4222/505**



**Material** Zinc Die-Cast  
**Finish** Chrome Plated  
**Type** Locking, Mixed Keys  
**Length** 129.5mm  
**Thickness** 42.5mm  
**Square** 111 x 8mm  
**Rotation** 360°  
**Hole Centres** 44.5mm  
**Fixing** 5.5mm Countersunk

**Interior/Exterior Handle  
4222/1861711\***



**Material** Zinc Die-Cast  
**Finish** Black  
**Keys** Mixed  
**Hole Centres** 42mm  
**Panel** Up to 70mm  
**Fixing** 8mm bar secured with roll pin

**Release Handle  
3204/002**



**Material** Zinc Alloy  
**Finish** Chrome Plated  
**Length** 119mm  
**Width** 35mm  
**Thickness** 36mm  
**Square** 9.5mm

**Black T Handle  
5224/006**



**Material** Mild Steel  
**Finish** Black Powder Coated  
**Type** Locking, Mixed Keys  
**Length** 101mm  
**Width** 24mm  
**Thickness** 45mm  
**Square** 110 x 8mm

**Titan Heavy Duty Handle  
5589/01279\***



**Type** Non-Locking  
**Colour** Black  
**Length** 160mm  
**Width** 37mm  
**Fixing** 44mm

## DOOR HANDLES - EXTERIOR

0907 Series - Paddle Lock  
0907/514



**Material** Mild Steel  
**Finish** Black Powder Coated  
**Type** Locking, Keys in Pairs  
**Length** 140mm  
**Width** 89mm  
**Thickness** 36mm

0912 Series - Paddle Lock  
0912/410



**Material** 304 Stainless Steel  
**Finish** Self Colour  
**Type** Locking, Keys in Pairs  
**Length** 139.5mm  
**Width** 108mm  
**Thickness** 38mm

5589 Series - Drop T Latch  
5589/1503



**Material** Stainless Steel  
**Finish** Polished  
**Type** Locking, Keyed Alike  
**Length** 121mm  
**Width** 124mm  
**Thickness** 21mm  
**Fixing** 5mm

Striker Plate  
9500/11705-15



**Material** Mild Steel  
**Finish** Zinc Plated  
**Length** 97mm  
**Width** 30mm  
**Thickness** 1.5mm

Travel Trailer Latch  
9500/29790-08



**Material** Zinc Die-Cast  
**Finish** White Powder Coated  
**Type** Locking, Keyed Alike  
**Length** 109.5mm  
**Width** 87.5mm  
**Thickness** 40mm

Interior Release Plate  
9500/15605-02



**Material** Zinc Die-Cast  
**Finish** White Powder Coated  
**Width** 120.5mm  
**Depth** 109.5mm  
**Fixing** 3mm

Universal Door Gear – Ø16mm  
6000/33716111



**Material** 304 Stainless Steel  
**Finish** Polished  
**Type** Bolt On

Compartment Lock - Left Hand  
5327/9301LH



**Material** Plastic  
**Finish** Black  
**Type** Left Hand  
**Inside Lock Length (Without Handle/Striker)** 120mm x 56.5mm  
**Keys** Sold Separately

Compartment Lock - Right Hand  
5327/9301RH



**Material** Plastic  
**Finish** Black  
**Type** Right Hand  
**Inside Lock Length (Without Handle/Striker)** 120mm x 56.5mm  
**Keys** Sold Separately

## DOOR RETAINERS

0556 Series - Assembly, White  
0556/001



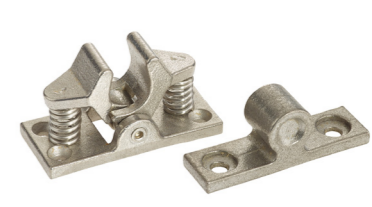
**Material** Nylon Moulding  
**Colour** White  
**Type** Assembly  
**Length** 65mm  
**Width** 29mm  
**Fixing** 5mm

0555 Series - Claw Retainer  
0555/003 (Male) 0555/004 (Female)



**Material** Nylon Moulding  
**Colour** Black  
**Type** Male / Female  
**Length** 58mm / 67mm  
**Width** 25mm / 24.5mm  
**Fixing** 6mm / 6mm

2132 Series - Assembly, SS  
2132/1000



**Material** 304 Stainless Steel  
**Type** Assembly  
**Length** 65mm  
**Width** 29mm  
**Fixing** 4.5mm Countersunk

Door Check Strap  
4232/038



**Material** Stainless Steel  
**Finish** Self Colour  
**Strap** Rubber  
**Length** 124mm  
**Width** 40mm  
**Depth** 2.5mm  
**Fixing** 5mm

0666 Series - Female, Rubber  
0666/001



**Material** Synthetic Rubber  
**Finish** Black  
**Type** Female  
**Width** 40mm  
**Depth** 36mm  
**Fixing** 7mm  
**Shore A** 70-85°  
**Pull Force** 20-25kg

0666 Series - Male, Rubber  
0666/002



**Material** Polypropylene  
**Finish** Black  
**Type** Male  
**Width** 25mm  
**Depth** 27mm  
**Fixing** 6.5mm

T Bar Door Retainer  
9810/3350



**Material** 304 Stainless Steel  
**Finish** Self Colour  
**Length** 123mm  
**Width** 40mm  
**Fixing** 5mm

T Bar Catch Plate  
9810/3370



**Material** 304 Stainless Steel  
**Finish** Self Colour  
**Length** 66mm  
**Width** 40mm  
**Fixing** 5mm

T Bar Back Plate  
9810/3390



**Material** Moulded Plastic  
**Colour** Black  
**Length** 70.5mm  
**Width** 60mm  
**Fixing** 5.5mm

## FASTENERS

**Small Gravelly Fastener  
0660/0001**



**Material** Mild Steel  
**Finish** Chrome Plated  
**Length** 33mm  
**Width** 23mm  
**Arm Length** 43mm  
**Striker Plate** 46.5 x 23mm  
**Fixing** 4mm

**Large Gravelly Fastener  
0660/0002**



**Material** Mild Steel  
**Finish** Chrome Plated  
**Length** 40mm  
**Width** 25mm  
**Arm Length** 57mm  
**Striker Plate** 64 x 27mm  
**Fixing** 4mm

**Ø7/15mm Stroke Shoot Bolt  
0486/16-1-3647**



**Material** Mild Steel  
**Finish** ZP, Clear Passivated  
**Type** Bolt On  
**Fixing** 2 x 5mm  
**Length** 43.5mm  
**Width** 11mm  
**Stroke** 15mm  
**Pin Diameter** 7mm  
**End Plate Dimensions** 35 x 11 x 2mm

**Chrome Plated - Medium  
0662/001**



**Material** Zinc Die-Cast  
**Finish** Chrome Plated  
**Length** 48mm  
**Width** 24mm  
**Arm Length** 46mm  
**Striker Plate** 48 x 24mm  
**Fixing** Ø4mm Countersunk

**16mm Cam - Locking  
2244/101**



**Material** Mild Steel  
**Finish** Chrome Plated  
**Type** Mixed Keys  
**Diameter** Ø26.5mm  
**Grip** 16mm  
**Fixing** 180°

**20mm Cam - Locking  
2245/101**



**Material** Mild Steel  
**Finish** Chrome Plated  
**Type** Keyed in Pairs  
**Diameter** Ø25mm  
**Grip** 20mm  
**Fixing** 180°

**Wing Knob Handle  
5000/0420\***



**Material** Zinc Plated  
**Finish** Black Powder Coating  
**Keys** Mixed Keys  
**Rating** IP67  
**Length** 32mm

**Square Key - 8mm  
5000/055**



**Material** Mild Steel  
**Finish** Zinc Plated  
**Length** 55mm

**18mm Square Quarter Turn  
5000/818**



**Material** Zinc Die-Cast  
**Finish** Chrome Plated  
**Length** 18mm  
**Inset** 8mm Sqr

## GAS SPRINGS - 8MM

**19mm Cylinder, 100mm Stroke  
1280/1090**



**Piston Diameter** 8mm  
**Cylinder Diameter** 19mm  
**Stroke** 100mm  
**Extended Length** 250mm  
**Thread** M8  
**Force** 50 - 700N

**19mm Cylinder, 150mm Stroke  
1280/1250**



**Piston Diameter** 8mm  
**Cylinder Diameter** 19mm  
**Stroke** 150mm  
**Extended Length** 360mm  
**Thread** M8  
**Force** 50 - 700N

**19mm Cylinder, 200mm Stroke  
1280/1400**



**Piston Diameter** 8mm  
**Cylinder Diameter** 18mm  
**Stroke** 200mm  
**Extended Length** 460mm  
**Thread** M8  
**Force** 50 - 700N

**19mm Cylinder, 250mm Stroke  
1280/1550**



**Piston Diameter** 8mm  
**Cylinder Diameter** 19mm  
**Stroke** 250mm  
**Extended Length** 560mm  
**Thread** M8  
**Force** 50 - 700N

**Angled Attachment Bracket  
1258/03**



**Material** Zinc Plated  
**Length** 45mm  
**Width** 25mm  
**Ball** Ø10mm

**Pressure Release Key  
1286/001**



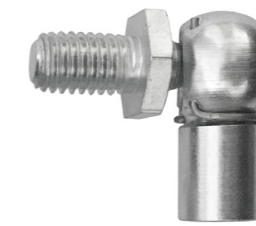
**To Fit** M8 Female Thread

**Eye Fitting - 20 x 8mm, M8  
1251/02**



**Length** 20mm  
**Hole Diameter** 8mm  
**Female Thread** M8  
**Bracket** 1258/01,  
1258/02,  
1258/904  
**Bracket Cap** 1258/021

**Elbow Joint - M8 x 13 x 19mm  
1252/52**



**Length** 19mm  
**Male Thread** M8 x 13mm  
**Female Thread** M8  
**Bracket** 1258/03,  
1258/04

**Attachment Bracket  
1258/904**



**Material** 304 Stainless Steel  
**Length** 69mm  
**Width** 18mm  
**Complete With** Clevis pin & retaining clip

## GAS SPRINGS - 10MM

22mm Cylinder, 150mm Stroke  
1282/2001



Piston Diameter 10mm  
Cylinder Diameter 22mm  
Stroke 150mm  
Extended Length 360mm  
Thread M8  
Force 50 - 1300N

22mm Cylinder, 200mm Stroke  
1282/2002



Piston Diameter 10mm  
Cylinder Diameter 22mm  
Stroke 200mm  
Extended Length 460mm  
Thread M8  
Force 50 - 1300N

22mm Cylinder, 250mm Stroke  
1282/2132



Piston Diameter 10mm  
Cylinder Diameter 22mm  
Stroke 250mm  
Extended Length 540mm  
Thread M8  
Force 50 - 1300N

22mm Cylinder, 300mm Stroke  
1282/2302



Piston Diameter 10mm  
Cylinder Diameter 22mm  
Stroke 300mm  
Extended Length 660mm  
Thread M8  
Force 50 - 1300N

22mm Cylinder, 400mm Stroke  
1282/2602



Piston Diameter 10mm  
Cylinder Diameter 22mm  
Stroke 400mm  
Extended Length 860mm  
Thread M8  
Force 50 - 1300N

Angled Attachment Bracket  
1258/03



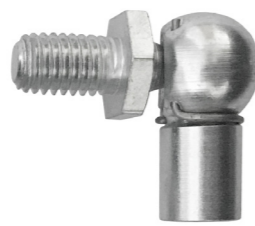
Material Zinc Plated  
Length 45mm  
Width 25mm  
Ball Ø10mm

Eye Fitting - 20 x 8mm, M8  
1251/02



Length 20mm  
Hole Diameter 8mm  
Female Thread M8  
Bracket 1258/01,  
1258/02,  
1258/904  
Bracket Cap 1258/021

Elbow Joint - M8 x 13 x 19mm  
1252/52



Length 19mm  
Male Thread M8 x 13mm  
Female Thread M8  
Bracket 1258/03,  
1258/04

Attachment Bracket  
1258/904



Material 304 Stainless Steel  
Length 69mm  
Width 18mm  
Complete With Clevis pin & retaining clip

## GAS SPRINGS - 14MM & TRACTION

28mm Cylinder, 200mm Stroke  
1244/0807



**TRACTION SPRING**

Piston Diameter 10mm  
Cylinder Diameter 28mm  
Stroke 200mm  
Extended Length 495mm  
Thread M8  
Force 50 - 1300N

28mm Cylinder, 305mm Stroke  
1244/0808



**TRACTION SPRING**

Piston Diameter 10mm  
Cylinder Diameter 28mm  
Stroke 305mm  
Extended Length 705mm  
Thread M10  
Force 50 - 1500N

28mm Cylinder, 250mm Stroke  
1285/3455



Piston Diameter 14mm  
Cylinder Diameter 28mm  
Stroke 250mm  
Extended Length 560mm  
Thread M10  
Force 50 - 2600N

28mm Cylinder, 300mm Stroke  
1285/3478



Piston Diameter 14mm  
Cylinder Diameter 28mm  
Stroke 300mm  
Extended Length 680mm  
Thread M10  
Force 50 - 2600N

28mm Cylinder, 400mm Stroke  
1285/3490



Piston Diameter 14mm  
Cylinder Diameter 28mm  
Stroke 400mm  
Extended Length 860mm  
Thread M10  
Force 50 - 2600N

28mm Cylinder, 500mm Stroke  
1285/4210



Piston Diameter 14mm  
Cylinder Diameter 28mm  
Stroke 500mm  
Extended Length 1065mm  
Thread M10  
Force 50 - 2600N

Eye Fitting - 25 x 8mm, M10  
1251/34



Length 25mm  
Hole Diameter 8mm  
Female Thread M10  
Bracket 1258/01,  
1258/02,  
1258/904  
Bracket Cap 1258/021

Elbow Joint - M10 x 20 x 35mm  
1252/56



Length 35mm  
Male Thread M10 x 20mm  
Female Thread M10

Pressure Release Key - M10  
1286/002



To Fit M10

## HINGES - CENTAFLEX & LID SUPPORT STAYS

**Centaflex™ 2000 x 24mm  
2231/020**



**Material** Co-extruded PVC  
**Finish** Black  
**Length** 2000mm  
**Width** 28mm  
**Thickness** 24mm

**Centaflex™ 2500 x 24mm  
2231/025**



**Material** Co-extruded PVC  
**Finish** Black  
**Length** 2500mm  
**Width** 28mm  
**Thickness** 24mm

**Centaflex™ 3000 x 24mm  
2231/030**



**Material** Co-extruded PVC  
**Finish** Black  
**Length** 3000mm  
**Width** 28mm  
**Thickness** 24mm

**Centaflex™ 2000 x 34mm  
2231/120**



**Material** Co-extruded PVC  
**Finish** Black  
**Length** 2000mm  
**Width** 30mm  
**Thickness** 34mm

**Centaflex™ 2500 x 34mm  
2231/125**



**Material** Co-extruded PVC  
**Finish** Black  
**Length** 2500mm  
**Width** 30mm  
**Thickness** 34mm

**Centaflex™ 3000 x 34mm  
2231/130**



**Material** Co-extruded PVC  
**Finish** Black  
**Length** 3000mm  
**Width** 30mm  
**Thickness** 34mm

**Automatic Release Support Stay  
0486/24-7-3542**



**Material** Mild Steel  
**Finish** Zinc Plated  
**Closed Dimension** 159mm  
**Extended Dimension** 239mm

**Telescopic Support Stay 320mm  
2522/008**



**Material** Pressed Steel  
**Finish** Zinc Plated  
**Width Closed** 320mm  
**Width Open** 540mm

**Telescopic Support Stay 350mm  
2522/500**



**Material** Pressed Steel  
**Finish** Zinc Plated  
**Width Closed** 350mm  
**Width Open** 530mm

## HINGES - CONCEALED

**Locker Hinge - Left Hand  
0859/002**



**Material** Mild Steel  
**Finish** Zinc Plated  
**Type** Right Hand  
**Length** 210mm  
**Width** 127mm  
**Thickness** 68mm  
**Ball Stud** 13mm

**Locker Hinge - Right Hand  
0859/001**



**Material** Mild Steel  
**Finish** Zinc Plated  
**Type** Left Hand  
**Length** 210mm  
**Width** 127mm  
**Thickness** 68mm  
**Ball Stud** 13mm

**Concealed Hinge - Left Hand  
0859/006**



**Material** 304 Stainless Steel  
**Type** Left Hand  
**Opening Angle** 180°

**Concealed Hinge - Right Hand  
0859/007**



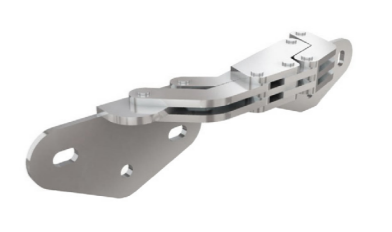
**Material** 304 Stainless Steel  
**Type** Right Hand  
**Opening Angle** 180°

**Concealed Hinge - 7 Axis  
0486/70-1-3664**



**Material** 304 Stainless Steel  
**Type** 7 Axis  
**Opening Angle** 180°

**Concealed Hinge - 90° Opening  
0486/70-1-3628**



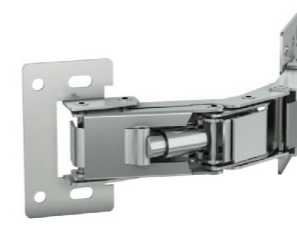
**Material** Mild Steel  
**Finish** Zinc Plated  
**Length** 126.5mm  
**Width** 30.2mm  
**Opening** 90°

**Concealed Hinge - 125° Opening  
0486/70-1-3639**



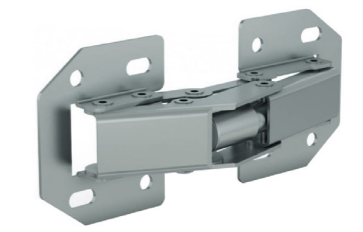
**Material** Mild Steel  
**Finish** Zinc Plated  
**Length** 44mm  
**Width** 29mm  
**Opening** 125°

**Concealed Hinge - 150° Opening  
0486/70-1-9001**



**Material** Mild Steel  
**Finish** Nickel Plated  
**Type** Spring Loaded  
**Length** 52mm  
**Width** 121mm  
**Opening** 150°

**Concealed Hinge - 90° Opening  
0486/70-1-9003**



**Material** Mild Steel  
**Finish** Nickel Plated  
**Type** Spring Loaded  
**Length** 44mm  
**Width** 104.5mm  
**Opening** 90°



## HINGES - CONTINUOUS

Steel Hinge - 1800 x 25mm  
2233/012



**Material** Mild Steel  
**Finish** Self Colour  
**Length** 1800mm  
**Width** 25mm  
**Thickness** 1mm

Steel Hinge - 1800 x 44mm  
2233/020



**Material** Mild Steel  
**Finish** Self Colour  
**Length** 1800mm  
**Width** 44mm  
**Thickness** 1mm

S/S Hinge - 1800 x 100mm  
2233/304S



**Material** 304 Stainless Steel  
**Length** 1800mm  
**Width** 100mm  
**Thickness** 3mm  
**Pin** 8mm

S/S Hinge - 1828 x 38mm  
2233/316



**Material** Stainless Steel  
**Length** 1828mm  
**Width** 38.5mm  
**Thickness** 1.2mm

S/S Hinge - 1828 x 50mm  
2233/323



**Material** Stainless Steel  
**Length** 1828mm  
**Width** 50mm  
**Thickness** 1.2mm

Aluminium Hinge - 1828 x 50mm  
2233/439



**Material** Aluminium  
**Finish** Self Colour  
**Length** 1828mm  
**Width** 50mm  
**Thickness** 1.5mm

Zinc Plated Hinge - 1800 x 50mm  
2233/623



**Material** Mild Steel  
**Finish** Zinc Plated  
**Length** 1800mm  
**Width** 50mm  
**Thickness** 1mm

Zinc Plated Hinge - 1800 x 75mm  
2233/679



**Material** Mild Steel  
**Finish** Zinc Plated  
**Length** 1800mm  
**Width** 75mm  
**Thickness** 2mm

S/S Hinge - 1800 x 63mm  
2234/6300



**Material** 304 Stainless Steel  
**Length** 1800mm  
**Width** 63mm  
**Thickness** 1.5mm

## HINGES

Screw Fix - 40 x 40mm  
0486/54-1-3029



**Material** Reinforced Polyamide  
**Finish** Black  
**Length** 40mm  
**Width** 40mm  
**Thickness** 5mm  
**Fixing** 5mm Countersunk

Screw Fix - 50 x 50mm  
0486/54-1-3030



**Material** Reinforced Polyamide  
**Finish** Black  
**Length** 50mm  
**Width** 50mm  
**Thickness** 6mm  
**Fixing** 6.5mm Countersunk

Stud Fix - 40 x 40mm  
0486/54-1-3031



**Material** Reinforced Polyamide  
**Finish** Black  
**Length** 40mm  
**Width** 40mm  
**Thickness** 5mm  
**Fixing** M5 Fixing

Leaf Hinge - 64/65.5mm  
1346/006



**Material** Reinforced Polyamide  
**Finish** Black  
**Length** 64mm  
**Width** 65.5mm  
**Thickness** 13.5mm  
**Fixing** 6mm Countersunk

Indent Hinge - 57/52mm  
1346/008



**Material** Acetal  
**Finish** Black  
**Length** 57mm  
**Width** 52mm  
**Thickness** 9mm  
**Fixing** 5mm Countersunk

Leaf Hinge - 64/67mm  
1349/002



**Material** Reinforced Nylon  
**Finish** Black  
**Length** 64mm  
**Width** 67mm  
**Thickness** 5mm  
**Fixing** 5.5mm Countersunk

Leaf Hinge - 47.5/5mm  
1349/004



**Material** Reinforced Nylon  
**Finish** Black  
**Length** 47.5mm  
**Width** 40mm  
**Thickness** 5mm  
**Fixing** 4mm Countersunk

Leaf Hinge - 102/67mm  
1349/013



**Material** Reinforced Nylon  
**Finish** White  
**Length** 102mm  
**Width** 67mm  
**Thickness** 5mm  
**Fixing** 5.5mm Countersunk

Window Plant On Hinge  
1350/002



**Material** Reinforced Nylon  
**Pin** Zinc Plated Steel  
**Finish** Black  
**Length** 100mm  
**Width** 80mm  
**Thickness** 12mm  
**Fixing** 9mm Countersunk  
**To Suit** 0.2mm Glass

# HINGES

Canopy Hinge - 120/3mm  
0948/002



**Material** Mild Steel  
**Finish** Z/P, Clear Passivated  
**Type** Bolt On  
**Length** 120mm  
**Width** 51mm  
**Thickness** 3mm  
**Diameter** 20mm  
**Fixing** 6.5mm

Medium Hinge - 146.5/4mm  
2216/003



**Material** Mild Steel  
**Finish** Z/P, Clear Passivated  
**Type** Bolt On  
**Length** 146.5mm  
**Width** 65mm  
**Thickness** 4mm  
**Diameter** 8mm  
**Fixing** 6.5mm

S/S Medium Hinge - 146.5/4mm  
2216/005



**Material** 316 Stainless Steel  
**Type** Bolt On  
**Length** 146.5mm  
**Width** 65mm  
**Thickness** 4mm  
**Diameter** 8mm  
**Fixing** 6.5mm

Small Hinge - 74.5/4mm  
2216/006



**Material** Mild Steel  
**Finish** Z/P, Clear Passivated  
**Type** Bolt On  
**Length** 74.5mm  
**Width** 65mm  
**Thickness** 4mm  
**Diameter** 7mm  
**Fixing** 6.5mm

S/S Small Hinge - 74.5/4mm  
2216/007



**Material** 304 Stainless Steel  
**Type** Bolt On  
**Length** 74.5mm  
**Width** 65mm  
**Thickness** 4mm  
**Diameter** 7mm  
**Fixing** 6.5mm

Small Hinge - 104.5/3.5mm  
2218/002



**Material** Mild Steel  
**Finish** Z/P, Clear Passivated  
**Type** Bolt On  
**Length** 104.5mm  
**Width** 50mm  
**Thickness** 3.5mm  
**Diameter** 6mm  
**Fixing** 6mm

S/S Medium Hinge - 180/4mm  
9820/6290



**Material** 316 Stainless Steel  
**Type** Bolt On  
**Length** 180mm  
**Width** 85mm/57mm  
**Thickness** 4mm  
**Diameter** 8mm  
**Fixing** 8.5mm

Small Hinge - 70/3.5mm  
2218/003



**Material** Mild Steel  
**Type** Bolt On  
**Length** 70mm  
**Width** 50mm  
**Thickness** 3.5mm  
**Diameter** 6mm  
**Fixing** 6mm

Small Hinge - 151/4mm  
9820/1151



**Material** 316 Stainless Steel  
**Type** Bolt On  
**Length** 151mm  
**Width** 68mm/30mm  
**Thickness** 4mm  
**Diameter** 8mm  
**Fixing** 8.2mm

# HINGES

Friction Hinge - 30 x 35mm  
0486/72-1-4137



**Material** Aluminium  
**Finish** Black Anodised  
**Length** 30mm  
**Width** 35mm  
**Thickness** 3mm  
**Fixing** 4 x 3mm Countersunk  
**Torque Force** 0-1Nm

Butt Hinge - 50 x 40mm  
0486/52-1-3607



**Material** 304 Stainless Steel  
**Length** 50mm  
**Width** 40mm  
**Thickness** 1mm  
**Opening** 270°  
**Fixing** 4 x 5mm Countersunk

Butt Hinge 40 x 40mm  
0486/52-1-3861



**Material** 304 Stainless Steel  
**Length** 40mm  
**Width** 40mm  
**Thickness** 2mm  
**Opening** 270°  
**Fixing** 4 x 3.5mm Countersunk

Butt Hinge - 75 x 40mm  
0486/52-1-3990



**Material** 304 Stainless Steel  
**Length** 75mm  
**Width** 40mm  
**Thickness** 1.5mm  
**Opening** 270°  
**Fixing** 6 x 5.1mm Countersunk

Butt Hinge - 50 x 50mm  
0486/71-1-3553



**Material** 304 Stainless Steel  
**Length** 50mm  
**Width** 50mm  
**Thickness** 2mm  
**Fixing** 5mm Through  
**Torque to Close** 1.5Nm

Friction Hinge - 65 x 55mm  
0486/72-1-4146



**Material** Aluminium  
**Finish** Black Anodised  
**Length** 65mm  
**Width** 55mm  
**Thickness** 4.5mm  
**Fixing** 4 x 6.5mm Counterbore  
**Torque Force** 0-5Nm

Friction Hinge - 30 x 35mm  
0486/72-1-4160



**Material** Aluminium  
**Finish** Clear Anodised  
**Length** 30mm  
**Width** 35mm  
**Thickness** 3mm  
**Fixing** 4 x 3mm Countersunk  
**Torque Force** 0-1Nm

Anti-Clockwise Hinge  
9820/33309



**Material** Mild Steel  
**Finish** Zinc Plated  
**Length** 76.5mm  
**Fixing** 4 x 9.5mm  
**Screws** 2 x M8  
**Thread Length** 17.2mm

Clockwise Hinge  
9820/33311



**Material** Mild Steel  
**Finish** Zinc Plated  
**Length** 76.5mm  
**Fixing** 4 x 9.5mm  
**Screws** 2 x M8  
**Thread Length** 17.2mm

## HINGES - TILA & DOUBLE KNUCKLE

Bulb Seal Gasket - 2500mm  
0486/27-1-3817



Material Rubber  
Length 2500mm  
To Be Used With Aluminium Hinges

Bulb Seal Gasket - 3000mm  
0486/27-1-3818



Material Rubber  
Length 3000mm  
To Be Used With Aluminium Hinges

Aluminium Hinge - 2500mm  
0486/73-1-3521



Material Aluminium  
Finish Anodised  
Length 2500mm  
Width 33mm  
Thickness 25mm  
Opening 180°  
Panel Suitability 24.4mm

Aluminium Hinge - 2000mm  
0486/73-1-3520



Material Aluminium  
Finish Anodised  
Length 2000mm  
Width 33mm  
Thickness 25mm  
Opening 180°  
Panel Suitability 24.4mm

Tila Hinge - 2000 x 22mm  
2229/2200



Material Aluminium  
Finish Anodised  
Length 2000mm  
Width 32mm  
Thickness 24mm  
Opening 180°  
Panel Suitability 22mm

Tila Hinge - 2700 x 22mm  
2229/2270



Material Aluminium  
Finish Anodised  
Length 2700mm  
Width 32mm  
Thickness 24mm  
Opening 180°  
Panel Suitability 22mm

Tila Hinge - 3000 x 22mm  
2229/2300



Material Aluminium  
Finish Anodised  
Length 3000mm  
Width 32mm  
Thickness 24mm  
Opening 180°  
Panel Suitability 22mm

Tila Hinge - 2200 x 29mm  
2229/9220



Material Aluminium  
Finish Anodised  
Length 2200mm  
Width 32mm  
Thickness 24mm  
Opening 180°  
Panel Suitability 29mm

Tila Hinge - 3000 x 29mm  
2229/9300



Material Aluminium  
Finish Anodised  
Length 3000mm  
Width 32mm  
Thickness 24mm  
Opening 180°  
Panel Suitability 29mm

## IRONWORK

Locking Bar Tab - 20mm Bar  
4044/004



Material Mild Steel  
Finish Self Colour  
Type Weld On  
Length 80mm  
Width 36mm  
Height 36mm  
To Suit 20mm Bar

Locking Bar Tab - 25mm Bar  
4044/005



Material Mild Steel  
Finish Self Colour  
Type Weld On  
Length 80mm  
Width 36mm  
Height 36mm  
To Suit 25mm Bar

Locking Bar Bracket - 20mm Bar  
4109/001



Material Forged Steel  
Finish Self Colour  
Type Weld On  
Length 45mm  
Width 26mm  
Height 45mm  
To Suit 20mm Bar

Locking Bar Bracket - 25mm Bar  
4109/002



Material Forged Steel  
Finish Self Colour  
Type Weld On  
Length 45mm  
Width 26mm  
Height 45mm  
To Suit 25mm Bar

Locking Bar Hook - 21mm  
4047/001



Material Forged Steel  
Finish Self Colour  
Type Weld On  
Diameter 21mm  
Length 82mm  
Width 68mm  
Height 26.5mm  
To Suit 20mm Bar

Locking Bar Hook - 26mm  
4047/002



Material Forged Steel  
Finish Self Colour  
Type Weld On  
Diameter 26mm  
Length 82mm  
Width 68mm  
Height 24.5mm  
To Suit 25mm Bar

Eye Plate - Zinc Plated  
3106/011



Material Mild Steel  
Finish Zinc Plated  
Type Weld On  
Diameter 22mm  
Length 152mm  
Width 52mm  
Thickness 5mm

Eye Plate - Self Colour  
3106/001



Material Mild Steel  
Finish Self Colour  
Type Weld On  
Diameter 22mm  
Length 152mm  
Width 51mm  
Thickness 5mm

Eye Plate - Self Colour  
3107/022



Material Mild Steel  
Finish Self Colour  
Type Weld On  
Diameter 21.5mm  
Length 245mm  
Width 40mm  
Thickness 7.5mm

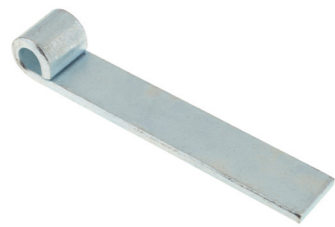
## IRONWORK

Straight Hinge 152.5mm / SC  
0969/002



Material	Mild Steel
Finish	Self Colour
Diameter	12.5mm
Length	152.5mm
Width	30mm
Thickness	6mm
Height	24.5mm

Straight Hinge 152.5mm / ZP  
0969/012



Material	Mild Steel
Finish	Zinc Plated
Diameter	12.5mm
Length	152.5mm
Width	30mm
Thickness	6mm
Height	24.5mm

Straight Hinge 153mm / SC  
1002/013



Material	Mild Steel
Finish	Self Colour
Diameter	12.5mm
Length	153mm
Width	39.5mm
Thickness	7.5mm
Height	29mm

Straight Hinge 460mm / ZP  
1002/012



Material	Mild Steel
Finish	Zinc Plated
Diameter	12.5mm
Length	460mm
Width	30mm
Thickness	6mm
Height	25.5mm

Straight Hinge 460mm / SC  
1002/014



Material	Mild Steel
Finish	Self Colour
Diameter	12.5mm
Length	460mm
Width	40mm
Thickness	8mm
Height	29mm

Straight Hinge 460mm / ZP  
1002/024



Material	Mild Steel
Finish	Zinc Plated
Diameter	12.5mm
Length	460mm
Width	41mm
Thickness	8mm
Height	28.5mm

Gudgeon Pin - 12.5 x 50mm  
1016/002



Material	Mild Steel
Finish	Zinc Plated
Type	Bolt On
Diameter	12.5 x 50mm
Base Dimensions	84 x 30mm

Gudgeon Pin - 12.5 x 48mm  
1037/010



Material	Mild Steel
Finish	Self Colour
Type	Weld On
Diameter	12.5 x 48mm
Length	100mm
Height	25mm
Base Dimensions	26 x 52mm

Tailboard Hinge Assembly  
9934/0900



Material	Mild Steel
Finish	Zinc Plated
Type	Bolt On
Length	100mm
Height	34.75mm

## LASHING RINGS

Lightweight D Ring  
5589/5151



Material	Mild Steel
Finish	Zinc Plated
Length	62.5mm
Width	52mm
Depth	6mm
Load	Lightweight
Fixing	10mm Through

Elongated Lightweight D Ring  
1062/001



Material	Mild Steel
Finish	Z/P Clear Passivated
Length	79mm
Width	29mm
Depth	5mm
Load	Lightweight
Fixing	7mm Through

Stainless Steel Lashing Ring  
1078/020



Material	Stainless Steel
Finish	Polished
Plate Width	40mm
Plate Length	50mm
Ring Thickness	8mm
Ring Inner Diameter	50mm
Overall Depth	33mm

Medium Duty - 500kg SWL  
1057/001



Material	Pressed Steel
Finish	Zinc Plated
Length	95mm
Width	102mm
Depth	25mm
Load	Medium Duty
Fixing	7mm Countersunk
SWL	500kg

Medium Duty - 1500kg SWL  
1069/008



Material	Mild Steel
Finish	Z/P Clear Passivated
Length	90mm
Width	84mm
Depth	13mm
Load	Medium Duty
Fixing	2 x 10.2mm
SWL	1500kg

Medium Duty - 500kg SWL  
1057/0115



Material	304 Stainless Steel
Finish	Self Colour
Length	105mm
Width	105mm
Depth	25.5mm
Load	Medium Duty
Fixing	4 x 7mm Countersunk
SWL	500kg

Lightweight D Ring/ Dish  
5589/515



Material	Mild Steel
Finish	Z/P Clear Passivated
Length	103mm
Width	103mm
Depth	12.5mm
Load	Lightweight
Fixing	10mm Through
SWL	362kg

S/S Lightweight D Ring/Dish  
5589/515SS



Material	Stainless Steel
Length	103mm
Width	103mm
Depth	12.5mm
Load	Lightweight
Fixing	10mm Through

Heavy Duty - 12,000kg SWL  
1060/002



Material	Forged Steel
Finish	Galvanised
Length	151mm
Width	172mm
Depth	24.5mm
Load	Heavy Duty
SWL	12,000kg
Fixing	Weld On

## LED LIGHTING - INTERIOR

Cool White Oval Lamp, 12V  
6500/115096W



Voltage	12V
LEDs	30
Length	150mm
Width	150mm
Depth	19mm
Lumens (Raw)	800lm
Lumens (Effective)	390lm
Current Draw	(13.8V) 0.53A
Cable Length	280mm

Blue Speciality Marker Lamp  
6500/16BC12B



Voltage	12V
Length	58mm
Width	16mm
Depth	12.5mm

Cool White Door Scene Lamp  
6500/186WC



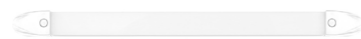
Voltage	12V
LEDs	8
Length	186mm
Width	49mm
Depth	31mm
Lumens (Raw)	240lm
Lumens (Effective)	180lm
Current Draw	(13.8V) 0.22A
Cable Length	400mm

White Rectangular Lamp, 12V  
6500/148WW12



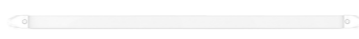
Voltage	12V
LEDs	15
Length	148mm
Width	71mm
Depth	19.5mm
Lumens (Raw)	675lm
Lumens (Effective)	185lm
Current Draw	(13.8V) 0.17A
Cable Length	200mm

Strip Lamp, Direct - 362mm  
6500/2430WM



Voltage	12/24V
LEDs	18
Length	362mm
Width	25mm
Depth	11mm
Lumens (Effective)	269lm
Current Draw	(13.8V/28V) 0.26A/0.14A
Cable Length	200mm
End Caps	White

Strip Lamp, Direct - 662mm  
6500/2460WM



Voltage	12/24V
LEDs	36
Length	662mm
Width	25mm
Depth	11mm
Lumens (Effective)	792lm
Current Draw	(13.8V/28V) 0.51A/0.26A
Cable Length	200mm
End Caps	White

Cool White Oval Lamp, 12V  
6500/7515W



Voltage	12V
LEDs	15
Length	76mm
Width	76mm
Depth	9mm
Lumens (Raw)	230lm
Lumens (Effective)	180lm
Current Draw	(13.8V) 0.27A
Cable Length	200mm

Blue Speciality Lamp, 12V  
6500/75CLB



Voltage	12V
LEDs	4
Length	75mm
Width	75mm
Depth	17mm
Current Draw	(13.8V) 0.06A
Cable Length	400mm

Strip Lamp, PIR, 12V  
6500/40310-PIR



Voltage	12V
Length	310mm
Width	40mm
Depth	15mm
Lumens (Effective)	380lm
Light Output	6500K

## LED LIGHTING - REAR

Multifunction Trailer Lamp, Left  
6500/284RAWFML



Voltage	12/24V
Fixing	Left
Length	284mm
Width	100mm
Depth	37mm
Cable Length	280mm

Multifunction Trailer Lamp, Right  
6500/284RAWFMR



Voltage	12/24V
Fixing	Right
Length	284mm
Width	100mm
Depth	37mm
Cable Length	280mm

Stop/Tail/Indicator, 12/24V  
6500/12ARM



Voltage	12/24V
Type	Stop/Tail/Indicator
Length	131mm
Width	30mm
Depth	8mm
Cable Length	250mm

Low Profile Fog Lamp, 12/24V  
6500/12FM



Voltage	12/24V
Type	Fog
LEDs	6
Length	131mm
Width	30mm
Depth	8mm
Current Draw	(13.8V/28V) 0.0A/0.0A

Low Profile Reverse Lamp, 12/24V  
6500/12WM



Voltage	12/24V
Type	Reverse
LEDs	6
Length	131mm
Width	30mm
Depth	8mm
Current Draw	(13.8V/28V) 0.21A/0.21A

Stop/Tail/Indicator, 12/24V  
6500/135ARME



Voltage	12/24V
Type	Stop/Tail/Indicator
Length	135mm
Width	38mm
Depth	24mm
Cable Length	180mm

Fog Lamp, 12/24V  
6500/135FME



Voltage	12/24V
Type	Fog
Length	135mm
Width	38mm
Depth	24mm
Cable Length	180mm
Mounting	Surface Mount

Brake Light, 12/24V  
6500/135RMES3



Voltage	12/24V
Type	Brake
Length	135mm
Width	38mm
Depth	24mm
Cable Length	180mm
Mounting	Surface Mount
Approval	S3 Approved

Reverse Lamp, 12/24V  
6500/135WME



Voltage	12/24V
Type	Reverse
Length	135mm
Width	38mm
Depth	24mm
Cable Length	180mm
Mounting	Surface Mount

## LED LIGHTING - REAR

**Dynamic Indicator Lamp  
6500/385FWARM**



Voltage	12/24V
Type	Stop/Tail/Dynamic Indicator/Fog/Reverse
Length	387mm
Width	105mm
Depth	31mm

**Stop/Tail/Indicator/Fog/Reverse  
6500/82CFWRACM**



Voltage	12/24V
Type	Stop/Tail/Indicator Fog/Reverse
Length	372mm
Width	101mm
Depth	30mm
Cable Length	300mm

**Surface Mounting Bracket  
6500/95BKT**



Length	100mm
Width	100mm
Depth	23mm

**Fog Lamp, 12/24V  
6500/95FM**



Voltage	12/24V
Type	Fog
Length	95mm
Width	95mm
Depth	18mm
Cable Length	200mm

**Stop/Tail/Indicator, 12/24V  
6500/95STIM**



Voltage	12/24V
Type	Stop/Tail/Indicator
Length	95mm
Width	95mm
Depth	18mm
Cable Length	200mm

**Reverse, 12/24V  
6500/95WM**



Voltage	12/24V
Type	Reverse
Length	95mm
Width	95mm
Depth	18mm
Cable Length	200mm

**Fog Lamp, 12/24V  
6500/HBL140FM**



Voltage	12/24V
Type	Fog
Length	140mm
Width	140mm
Depth	83mm
Cable Length	300mm

**Stop/Tail/Indicator, 12/24V  
6500/HBL140STIM**



Voltage	12/24V
Type	Stop/Tail/Indicator
Length	140mm
Width	140mm
Depth	83mm
Cable Length	300mm

**Reverse Lamp, 12/24V  
6500/HBL140WM**



Voltage	12/24V
Type	Reverse
Length	140mm
Width	140mm
Depth	83mm
Cable Length	300mm

## LED LIGHTING - SIDE MARKERS

**Cat 5 Side Marker Lamp, 12/24V  
6500/44AMECSB**



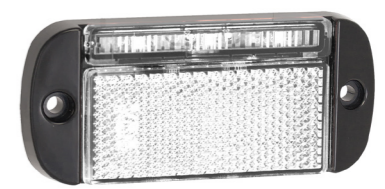
Voltage	12/24V
Length	100mm
Width	44mm
Depth	19mm
Cable Length	550mm
Approval	Cat 5

**Rear Marker, Reflector, 12/24V  
6500/44RME**



Voltage	12/24V
Type	Rear, Reflector
Length	100mm
Width	44mm
Depth	12mm
Cable Length	500mm

**Front Marker, Reflector, 12/24V  
6500/44WMEB**



Voltage	12/24V
Type	Front, Reflector
Length	100mm
Width	44mm
Depth	12mm
Cable Length	500mm

**Pendant Mounting Bracket  
6500/44BKT**



Type Pendant Bracket

**Horizontal Mounting Bracket  
6500/EU38BKT**



Type Horizontal Bracket

**Side Marker & Bracket - Amber  
6500/1491AM**



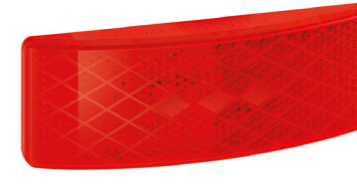
Voltage	12/24V
Length	110mm
Width	47mm
Depth	65mm

**Side Marker, Reflector, 12/24V  
6500/EU38AMB**



Voltage	12/24V
Type	Side, Reflector
Length	100mm
Width	38mm
Depth	13mm
Cable Length	350mm

**Rear Marker, Reflector, 12/24V  
6500/EU38RMB**



Voltage	12/24V
Type	Rear, Reflector
Length	100mm
Width	38mm
Depth	13mm
Cable Length	350mm

**Front Marker, Reflector, 12/24V  
6500/EU38WMB**



Voltage	12/24V
Type	Front, Reflector
Length	100mm
Width	380mm
Depth	13mm
Cable Length	350mm

## LED LIGHTING - BLUE & RED

75 Series - Chrome, Red  
6500/75CLR



Voltage 12V  
LEDs 4  
Length 75mm  
Width 75mm  
Depth 17mm

Pilot Light - Red  
6500/PLR12



Voltage 12V  
LEDs 1  
Length 15mm  
Width 15mm  
Depth 30mm  
Cable Length 400mm

181 Series - Red Rear Marker  
6500/181RME



Voltage 12/24V  
Length 28mm  
Width 28mm  
Depth 25mm  
Cable Length 175mm

16 Series - Red Rear Marker  
6500/16R12-2



Voltage 12V  
Length 58mm  
Width 16mm  
Depth 12.5mm  
Pack Twin

6505 Series - Red  
6500/6505RM



Voltage 12/24V  
LEDs 5  
Length 65mm  
Width 30mm  
Depth 24mm  
Cable Length 300mm

Pilot Light - Blue  
6500/PLB12



Voltage 12V  
LEDs 1  
Length 15mm  
Width 15mm  
Depth 30mm  
Cable Length 400mm

181 Series - Blue Marker  
6500/181BME



Voltage 12/24V  
Length 28mm  
Width 28mm  
Depth 25mm  
Cable Length 175mm

6505 Series - Blue  
6500/6505BM



Voltage 12/24V  
LEDs 5  
Length 65mm  
Width 30mm  
Depth 24mm  
Cable Length 300mm

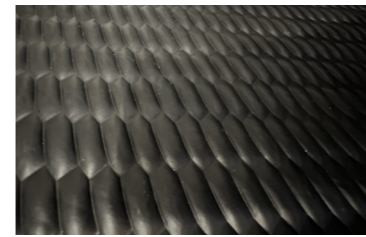
16 Series - Blue Marker  
6500/16BC12B



Voltage 24V  
Length 58mm  
Width 16mm  
Depth 12.5mm

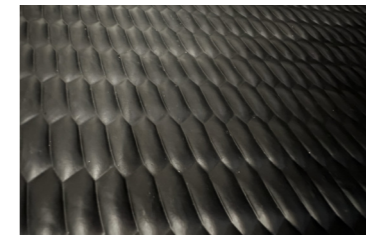
## MATTING

Stable Mat - 36mm  
4532/004



Length 6ft  
Width 4ft  
Thickness 36mm

Stable Mat - 24mm  
4532/003



Length 6ft  
Width 4ft  
Thickness 24mm

Stable Wall Mat - 10mm  
4532/002



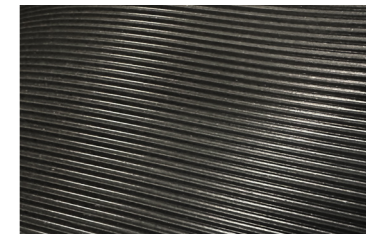
Length 6ft  
Width 4ft  
Thickness 10mm

Linear Wide Insertion Mat  
4450/001



Length 1m  
Width 914mm  
Thickness 3mm

Fine Rib Mat - 3mm  
4532/0021



Length 1m  
Width 1.2m  
Thickness 3mm

Stable Mat - 18mm  
4532/005



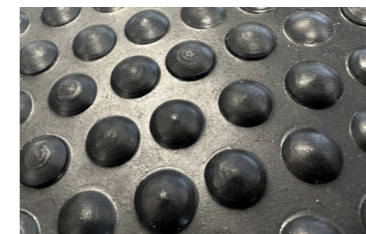
Length 6ft  
Width 4ft  
Thickness 18mm

Bevelled Edge Stable Mat - 12mm  
4532/007



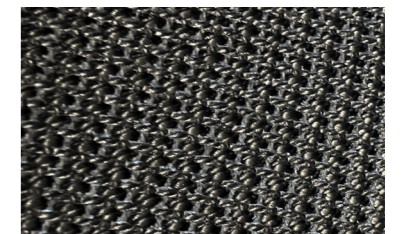
Length 1m  
Width 1.52m  
Thickness 12mm

Stable Mat - 12mm  
4532/006



Length 6ft  
Width 4ft  
Thickness 12mm

Grip Top Stable Mat - 6mm  
4532/008



Length 1.2m  
Width 2m  
Thickness 6mm

## MISCELLANEOUS

Load Resistor, 12V  
6500/LR12



Voltage 12V

Pressed Steel Pull Handle  
6000/315002I



Material 304 Stainless Steel  
Finish Polished  
Length 333.5mm  
Width 55mm  
Thickness 25mm  
Fixing 8.5mm

Rubber Matting Grabber  
4532/001



Pull 200kg

Square Flood Light, 12/24V  
6500/10915BM



Voltage 12/24V  
Type Flood Beam  
LEDs 5 x 3W  
Length 110mm  
Width 140mm  
Depth 35mm  
Lumens Raw 1200lm  
Lumens Effective 700lm

Tanky Handwash Unit  
6688/525015050



Colour Black  
Capacity 45 Litre  
Height 430-450mm  
Width 420mm  
Depth 450mm  
Weight 5,2kg

Clamp On Battery Connectors  
9100/45000



Material Polypropylene Cover  
Type Blister Pack  
Fixing Clamp On

Magazine Net - 365mm  
0365/185



Width 365mm  
Height 185mm

Magazine Net - 310mm  
0365/210



Width 310mm  
Height 210mm

Vehicle Seat Cover  
0288/001



Type Universal

## PULL HANDLES

246mm Plastic Handle  
0790/001



Material Polypropylene  
Colour Black  
Length 246mm  
Width 23.5mm  
Thickness 40mm  
Fixing 7mm

160mm Pressed Steel Handle  
0768/001



Material Mild Steel  
Finish Black PVC Coating  
Length 160mm  
Width 20.5mm  
Thickness 34mm  
Fixing 4mm Countersunk

102mm Aluminium Handle  
0486/19-1-3425



Material Aluminium  
Finish Polished  
Length 102mm  
Width 10mm  
Thickness 32mm  
Fixing M5 Tapped

275mm Cushion Grip Handle  
5589/415



Material Polypropylene  
Colour Black  
Length 275mm  
Width 26.5mm  
Thickness 55.5mm  
Fixing 9mm

184.5mm Cushion Grip Handle  
5589/414



Material Polypropylene  
Colour Black  
Length 184.5mm  
Width 28.5mm  
Thickness 55.5mm  
Fixing 9mm

120mm Pressed Steel Handle  
0486/19-1-3797



Material 304 Stainless Steel  
Finish Self Colour  
Length 120mm  
Width 15mm  
Thickness 21mm  
Fixing 4.5mm

295mm Cushion Grip Handle  
0080/001



Material Polyurethane Foam  
Colour Black  
Length 295mm  
Width 101mm  
Thickness 72mm  
Fixing 7mm

202.5mm Plastic Handle  
0847/003



Material Polypropylene  
Colour Black  
Length 205mm  
Width 28.5mm  
Thickness 47.5mm  
Fixing 9mm

172mm Plastic Handle  
0847/001



Material Polypropylene  
Colour Black  
Length 172mm  
Width 29.5mm  
Thickness 39mm  
Fixing 5.5mm



## RAMP FITTINGS

Ramp Spring Assembly  
2106/100



Material Mild Steel  
Finish Zinc Plated  
Length 700mm  
Complete With Brackets

Spring Only  
2106/003



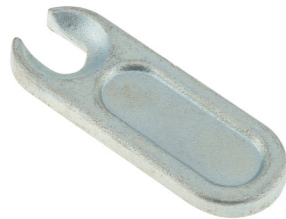
Colour Black  
Length 700mm  
Width 77mm  
Wire Diameter 14.2mm

Ramp Fastener - Acme Thread  
2056/221



Material Mild Steel  
Finish Zinc Plated  
Thread 141mm  
Length 165mm  
Width 38mm  
Thickness 10mm

Retaining Plate - Acme Thread  
2094/340



Material Mild Steel  
Finish Zinc Plated  
Length 144mm  
Width 51mm  
Thickness 12mm  
Compatible With 2056/221

Horsebox Ramp Handle  
2094/0873



Material 304 Stainless Steel  
Grip Handle Material Rubber  
Overall Length 334mm  
Height 199.5mm  
Depth 35mm

Foulger Ramp Springs  
2103/002



Material Mild Steel  
Finish Black Painted  
Safe Working Load 4 cwt  
Diameter 69mm  
Length 1210mm +/- 10mm  
Thickness 13.5mm  
Feature Heavy Duty

Side Mount Ramp Spring  
2106/002



Material Mild steel  
Finish Grey  
Spring Finish Red  
Safe Working Load 136kg  
Diameter 89mm  
Length 810mm +/- 5mm

Ramp Fastener - M16 Thread  
2094/221



Material Mild Steel  
Finish Zinc Plated  
Thread M16 x 141mm  
Length 165mm  
Width 38mm  
Thickness 10mm

Ramp Foot  
2500/003



Length 156.5mm  
Width 40mm  
Height 95mm  
Fixing 9mm  
To Suit 2500/002

## RIVETS - BLINDBOLT

Blindbolt - 2.03-9.63cm / SS  
7767/817SS



Material Stainless Steel  
Diameter 6.4mm  
Grip Range 2.03-9.53mm  
Length 14mm  
Total Length 23.7mm  
Thread Diameter 12.7mm

Blindbolt - 2.03-9.63cm / ZP  
7767/817ZP



Material Zinc Plated Steel  
Diameter 6.4mm  
Grip Range 2.03-9.53mm  
Length 14mm  
Total Length 23.7mm  
Thread Diameter 12.7mm

Blindbolt - 2.03-9.63cm / ZL  
7767/817AL



Material Aluminium  
Diameter 6.4mm  
Grip Range 2.03-9.53mm  
Length 14mm  
Total Length 23.7mm  
Thread Diameter 12.7mm

Blindbolt - 2.03-15.87 / SS  
7767/824SS



Material Stainless Steel  
Diameter 6.4mm  
Grip Range 2.03-15.87mm  
Length 19.05mm  
Total Length 32.92mm  
Thread Diameter 12.7mm

Blindbolt - 2.03-15.87 / ZP  
7767/824ZP



Material Zinc Plated Steel  
Diameter 6.4mm  
Grip Range 2.03-15.87mm  
Length 19.05mm  
Total Length 32.92mm  
Thread Diameter 12.7mm

Blindbolt - 2.03-15.87 / AL  
7767/824AL



Material Aluminium  
Diameter 6.4mm  
Grip Range 2.03-15.87mm  
Length 19.05mm  
Total Length 32.92mm  
Thread Diameter 12.7mm

Blindbolt - 3.17-12.07 / ZP  
7767/821CS



Material Zinc Plated Steel  
Diameter 6.4mm  
Grip Range 3.17-12.07mm  
Length 16.76-16.51mm  
Total Length 27mm  
Thread Diameter 10.03mm

Blindbolt - 1.7-6.8 / ZP  
7767/613ZP



Material Zinc Plated Steel  
Diameter 4.8mm  
Grip Range 1.7-6.8mm  
Length 10mm  
Total Length 17mm  
Thread Diameter 9.5mm

Blindbolt - 1.7-11 / ZP  
7767/617ZP



Material Zinc Plated Steel  
Diameter 4.8mm  
Grip Range 1.7-11mm  
Length 13.5mm  
Total Length 23.4mm  
Thread Diameter 9.5mm

## RIVETS - FASTAINER

Fastainer - 23.85-26.9mm  
7766/1216



Grip Range 23.85-26.9mm  
Under Head Length 65mm  
Break Point Length 25.4mm  
Shoulder Length 12.5mm  
Head Diameter 21.6mm

Fastainer - 14.3-17.5mm  
7766/1210



Grip Range 14.3-17.5mm  
Under Head Length 54mm  
Break Point Length 15.9mm  
Head Diameter 21.6mm

Fastainer - 15.9-19mm  
7766/1211



Grip Range 15.9-19mm  
Under Head Length 55mm  
Break Point Length 17.5mm  
Shoulder Length 4.6mm  
Head Diameter 21.6mm

Fastainer - 17.5-20.6mm  
7766/1212



Grip Range 17.5-20.6mm  
Under Head Length 55mm  
Break Point Length 19mm  
Shoulder Length 6mm  
Head Diameter 21.6mm

Fastainer - 19.1-22.2mm  
7766/1213



Grip Range 19.1-22.2mm  
Under Head Length 60mm  
Break Point Length 20.6mm  
Shoulder Length 7.9mm  
Head Diameter 21.6mm

Fastainer - 20.65-23.75mm  
7766/1214



Grip Range 20.65-23.75mm  
Under Head Length 60mm  
Break Point Length 22mm  
Shoulder Length 9.5mm  
Head Diameter 21.6mm

Fastainer - 22.2-25.35mm  
7766/1215



Grip Range 22.2-25.35mm  
Under Head Length 62mm  
Break Point Length 23.8mm  
Shoulder Length 10.9mm  
Head Diameter 21.6mm

Fastainer - 33.1-33.3mm  
7766/1220



Grip Range 30.1-33.3mm  
Under Head Length 73mm  
Break Point Length 31.7mm  
Shoulder Length 14.2mm  
Head Diameter 21.6mm

Fastainer Shell  
7766/1200SH



Flange Diameter 31.5mm

## RIVETS - FASTBOLT

Boltlok - 4.8-8.0mm  
7765/B804



Material Medium Carbon Steel  
Finish Zinc Plated  
Pin 6.4mm  
Length To Breakoff 15.9mm  
Grip Range 4.8-8.0mm

Boltlok - 6.4-9.5mm  
7765/B805



Material Medium Carbon Steel  
Finish Zinc Plated  
Pin 6.4mm  
Length To Breakoff 17.4mm  
Grip Range 6.4-9.5mm

Boltlok - 8.0-11.0mm  
7765/B806



Material Medium Carbon Steel  
Finish Zinc Plated  
Pin 6.4mm  
Length To Breakoff 19mm  
Grip Range 6.4-9.5mm

Boltlok - 9.5-12.7mm  
7765/B807



Material Medium Carbon Steel  
Finish Zinc Plated  
Pin 6.4mm  
Length To Breakoff 20.6mm  
Grip Range 9.5-12.7mm

Boltlok - 11.0-14.3mm  
7765/B808



Material Medium Carbon Steel  
Finish Zinc Plated  
Pin 6.4mm  
Length To Breakoff 22.2mm  
Grip Range 11.0-14.3mm

Boltlok - 12.7-15.9mm  
7765/B809



Material Medium Carbon Steel  
Finish Zinc Plated  
Pin 6.4mm  
Length To Breakoff 23.8mm  
Grip Range 12.7-15.9mm

Boltlok - 14.3-17.4mm  
7765/B810



Material Medium Carbon Steel  
Finish Zinc Plated  
Pin 6.4mm  
Length To Breakoff 25.4mm  
Grip Range 14.3-17.4mm

Boltlok - 17.4-20.6mm  
7765/B812



Material Medium Carbon Steel  
Finish Zinc Plated  
Pin 6.4mm  
Length To Breakoff 28.6mm  
Grip Range 17.4-20.6mm

Boltlok Collar  
7765/C800



Material Low Carbon Steel  
Finish Zinc Plated  
Diameter 3/16"  
Collar Regular

## RIVETS - GRIPTAINER

Griptainer - 13.0-14.9mm  
7764/00B



Bolt Length 14mm  
Grip Range 13.0-14.9mm  
Thread 5/16 UNC  
Shear Strength 14 Kn  
Tensile Strength 20 Kn  
Drive Bit T55  
Recommended Assembly Torque 17-20 Nm

Griptainer - 14.5-20.5mm  
7764/10B



Bolt Length 16mm  
Grip Range 14.5-15.6mm  
Thread 5/16 UNC  
Shear Strength 14 Kn  
Tensile Strength 20 Kn  
Drive Bit T55  
Recommended Assembly Torque 17-20 Nm

Griptainer - 17.9-19.7mm  
7764/11B



Bolt Length 19.05mm  
Grip Range 17.9-19.7mm  
Thread 5/16 UNC  
Shear Strength 14 Kn  
Tensile Strength 20 Kn  
Drive Bit T55  
Recommended Assembly Torque 17-20 Nm

Griptainer - 21.3-23.1mm  
7764/12B



Bolt Length 22.2mm  
Grip Range 21.3-23.1mm  
Thread 5/16 UNC  
Shear Strength 14 Kn  
Tensile Strength 20 Kn  
Drive Bit T55  
Recommended Assembly Torque 17-20 Nm

Griptainer - 24.5-25.9mm  
7764/13B



Bolt Length 25.4mm  
Grip Range 24.5-25.9mm  
Thread 5/16 UNC  
Shear Strength 14 Kn  
Tensile Strength 20 Kn  
Drive Bit T55  
Recommended Assembly Torque 17-20 Nm

Griptainer Nut - 7mm  
7764/N0N



Nut Length 7mm

Griptainer Nut - 9.52mm  
7764/N1N



Nut Length 9.52mm

Griptainer Nut - 12.7mm  
7764/N2N



Nut Length 12.7mm

Griptainer Nut - 15.87mm  
7764/N3N



Nut Length 15.87mm

## RIVETS - MULTIGRIP

Multigrip Rivet - 3.2-7.9mm  
7768/48120K



Material Type Aluminium/Steel  
120° Countersunk Head  
Length 12mm  
Grip Range 3.2-7.9mm  
Diameter 4.8mm  
Flange Size 8.6mm

Multigrip Rivet - 6.3-12.7mm  
7768/48180K



Material Type Aluminium/Steel  
120° Countersunk Head  
Length 18mm  
Grip Range 6.3-12.7mm  
Diameter 4.8mm  
Flange Size 8.6mm

Multigrip Rivet - 6.4-12.7mm  
7768/48180L



Material Type Aluminium/Steel  
Extra Large Head  
Length 18mm  
Grip Range 6.4-12.7mm  
Diameter 4.8mm  
Flange Size 15.85mm

Multigrip Rivet - 1.6-6.4mm  
7768/48100L



Material Type Aluminium/Steel  
Extra Large Head  
Length 10mm  
Grip Range 1.6-6.4mm  
Diameter 4.8mm  
Flange Size 15.85mm

Multigrip Rivet - 5.5-9.5mm  
7768/32120D



Material Type Aluminium/Steel  
Dome Head  
Length 12mm  
Grip Range 5.5-9.5mm  
Diameter 3.2mm  
Flange Size 6.3mm

Multigrip Rivet - 1.6-6.4mm  
7768/48100D



Material Type Aluminium/Steel  
Dome Head  
Length 10mm  
Grip Range 1.6-6.4mm  
Diameter 4.8mm  
Flange Size 9.5mm

Multigrip Rivet - 4.8-11.1mm  
7768/48150D



Material Type Aluminium/Steel  
Dome Head  
Length 15mm  
Grip Range 4.8-11.1mm  
Diameter 4.8mm  
Flange Size 9.5mm

Multigrip Rivet - 6.3-12.7mm  
7768/48180D



Material Type Aluminium/Steel  
Dome Head  
Length 18mm  
Grip Range 6.3-12.7mm  
Diameter 4.8mm  
Flange Size 9.5mm

Multigrip Rivet - 12.7-19.8mm  
7768/48250D



Material Type Aluminium/Steel  
Dome Head  
Length 25mm  
Grip Range 12.7-19.8mm  
Diameter 4.8mm  
Flange Size 9.5mm

## ROD LOCKS & HANDLES

3 Point Lock - Left Hand, 2310mm  
0770/001



**Material** Mild Steel  
**Finish** Zinc Plated  
**Type** 3 Point, Left Hand  
**Length** 2310mm  
**Throw** 35mm  
**Linkage Rods** Ø9.5mm  
**Fixing** Ø5mm Countersunk

3 Point Lock - Right Hand, 2310mm  
0770/002



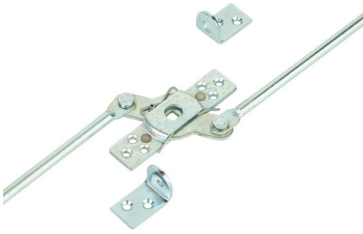
**Material** Mild Steel  
**Finish** Zinc Plated  
**Type** 3 Point, Right Hand  
**Length** 2310mm  
**Throw** 35mm  
**Linkage Rods** Ø9.5mm  
**Fixing** Ø5mm Countersunk

2 Point Lock - Left Hand, 2310mm  
0771/001



**Material** Mild Steel  
**Finish** Zinc Plated  
**Type** 2 Point, Left Hand  
**Length** 2310mm  
**Throw** 35mm  
**Linkage Rods** Ø9.5mm  
**Fixing** Ø5mm Countersunk

2 Point Lock - Right Hand, 2310mm  
0771/002



**Material** Mild Steel  
**Finish** Zinc Plated  
**Type** 2 Point, Right Hand  
**Length** 2310mm  
**Throw** 35mm  
**Linkage Rods** Ø9.5mm  
**Fixing** Ø5mm Countersunk

2 Point Lock - Left Hand, 2210mm  
5589/218



**Material** Mild Steel  
**Finish** Zinc Plated  
**Type** Left Hand  
**Length** 2210mm  
**Throw** 24mm  
**Linkage Rods** 9.5mm  
**Fixing** 4mm

2 Point Lock - Right Hand, 2210mm  
5589/216



**Material** Mild Steel  
**Finish** Zinc Plated  
**Type** Right Hand  
**Length** 2210mm  
**Throw** 24mm  
**Linkage Rods** 9.5mm  
**Fixing** 4mm

Interior/Exterior Handle  
4222/1861711\*



**Material** Zinc Die-Cast  
**Finish** Black  
**Keys** Mixed  
**Hole Centres** 42mm  
**Panel** Up to 70mm  
**Fixing** 8mm bar secured with roll pin

Lever Handle - Mixed Keys, 45mm  
4222/515



**Material** Zinc Die-Cast  
**Finish** Black Powder Coated  
**Type** Locking, Mixed Keys  
**Length** 130mm  
**Thickness** 43mm  
**Square** 110 x 8mm  
**Rotation** 360°  
**Hole Centres** 45mm  
**Fixing** 5.5mm Countersunk

Lever Handle - Locking, 38mm  
5589/409



**Material** 304 Stainless Steel  
**Finish** Self Colour  
**Type** Padlockable  
**Length** 185mm  
**Thickness** 42mm  
**Square** 85.5mm x 8mm  
**Hole Centres** 38mm  
**Fixing** 6.5mm Countersunk

## RUBBER BUFFERS

126mm Light Duty Buffer  
2500/002



**Material** Synthetic Rubber  
**Colour** Black  
**Length** 126mm  
**Width** 41mm  
**Stand-Off** 43.5mm  
**Fixing** 8mm

148mm Medium Duty Buffer  
2503/002



**Material** Synthetic Rubber  
**Colour** Black  
**Length** 148mm  
**Width** 49.5mm  
**Stand-Off** 50mm  
**Fixing** 12mm

200mm Medium Duty Buffer  
2503/001



**Material** Synthetic Rubber  
**Colour** Black  
**Length** 200mm  
**Width** 50.5mm  
**Stand-Off** 53mm  
**Fixing** 12.5mm

248.5mm Medium Duty Buffer  
2503/003



**Material** Synthetic Rubber  
**Colour** Black  
**Length** 248.5mm  
**Width** 49mm  
**Stand-Off** 51mm  
**Fixing** 12mm

75mm Conical Buffer  
2028/003



**Material** Synthetic Rubber  
**Colour** Black  
**Base Diameter** 64.5mm  
**Top Diameter** 55mm  
**Stand-Off** 76mm  
**Fixing** 10mm

98mm Conical Buffer  
2028/004



**Material** Synthetic Rubber  
**Colour** Black  
**Base Diameter** 65mm  
**Top Diameter** 50mm  
**Stand-Off** 98mm  
**Fixing** 9.5mm

12mm Round Buffer  
2028/001



**Material** Synthetic Rubber  
**Colour** Black  
**Base Diameter** 24mm  
**Top Diameter** 24mm  
**Stand-Off** 12mm  
**Fixing** 4mm

22mm Round Buffer  
2026/001



**Material** Synthetic Rubber  
**Colour** Black  
**Base Diameter** 32mm  
**Top Diameter** 32mm  
**Stand-Off** 22mm  
**Fixing** 6.2mm

100mm Conical Buffer  
2028/005



**Material** Synthetic Rubber  
**Colour** Black  
**Base Diameter** 64.5mm  
**Top Diameter** 50mm  
**Stand-Off** 100mm  
**Fixing** 9.5mm

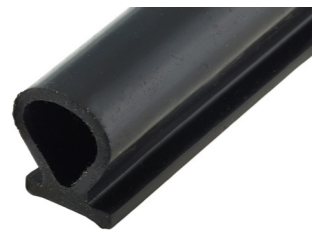
## RUB RAIL / J CHANNELS / DOOR SEALS

Door Buffer Strip Carrier  
2463/001



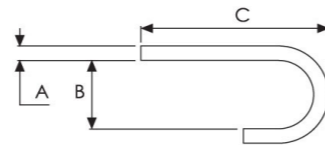
Material ABS  
Length 2000mm  
Width 26mm  
Depth 10mm

Sealing Profile  
2463/002



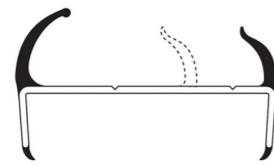
Material PVC  
Length 2000mm  
Width 20mm  
Depth 29mm

'J' Channel  
2880/001



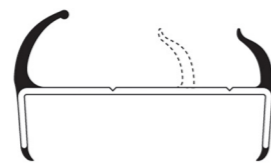
Material Aluminium  
Finish Self Colour  
Length 5m  
A 2mm  
B 9mm  
C 25.4mm

Container Door Seal - 83mm  
0535/083



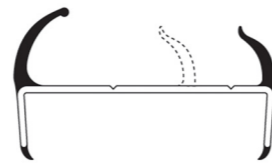
Material PVC  
Length 5m  
Panel 83mm  
Carrier 21mm  
Seal 28mm

Container Door Seal - 21mm  
0535/021



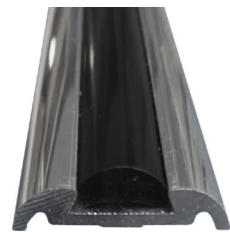
Material PVC  
Length 5m  
Panel 21mm  
Carrier 20mm  
Seal 27mm

Container Door Seal - 30mm  
0535/030



Material PVC  
Length 5m  
Panel 30mm  
Carrier 24mm  
Seal 27mm

Polished Rail & Black PVC Insert  
5444/010



Material Aluminium Herzim Rail & Black PVC  
Length 3m  
Width 25mm  
Depth 6.4mm

Rail End Cap  
5444/011



Material Aluminium Herzim  
Fixing Countersunk  
To Suit 5444/010  
Quantity Pack of 2

Drip Rail - White  
5245/JDRW



Material Vinyl PVC  
Colour White  
Length 1m  
Height 23mm  
Depth 12.5mm

## SAFETY PRODUCTS

Bio Kit Cabinet  
6688/532113015



Fixing Suction Cup  
Length 325mm  
Width 270mm  
Depth 71mm

First Aid Kit - Midi Case  
1230/10220



Length 260mm  
Width 210mm  
Depth 60mm

First Aid Kit - Wall Mounted  
1230/10221



Length 263.5mm  
Width 169.5mm  
Depth 83mm

Fire Extinguisher - 2kg  
1225/02900



Type Dry Powder  
Capacity 2kg  
Kitemarked BS EN3: 1996

Fire Blanket  
1226/003



Length 1100mm  
Width 1100mm  
Casing Dimensions 210 x 165mm  
Kitemarked BS EN 1869: 1997

Fire Extinguisher - 1kg  
1225/02908



Type Dry Powder  
Capacity 1kg  
Kitemarked BS EN3: 1996

PCV First Aid Kit Bag  
1230/10226



Type Blue Dot - Public Carrying Vehicle

Fire Extinguisher - 600g  
1225/002



Material Aluminium  
Type Dry Powder  
Capacity 600g  
Kitemarked BS 6165: 2002  
Rated 21B

Equestrian First Aid Kit  
1230/10227



Kit Contains Sterile Dressing  
Gloves  
Bandages  
Hand Sanitiser  
Sterile Wipes  
Tweezers  
Eye Wash  
Plasters  
Safety Pins

# SEALANT

**Wellseal Jointing Compound**  
2191/211561



Colour Brown  
Type Jointing Compound  
Capacity 100ml

**Korapur 135 - White, Cartridge**  
2191/214254



Colour White  
Type Cartridge  
Capacity 300ml  
Quantity 12 per box

**Korapur 140 - White, Sausage**  
2191/157717



Colour White  
Type Sausage  
Capacity 600ml  
Quantity 12 per box

**Korapur 125 - White, Cartridge**  
2191/213793



Colour White  
Type Cartridge  
Capacity 300ml  
Quantity 12 per box

**Korapur 175 - Black, Sausage**  
2191/217235



Colour Black  
Type Sausage  
Capacity 600ml  
Quantity 12 per box

**Korapur 115 - White, Cartridge**  
2191/219965



Colour White  
Type Cartridge  
Capacity 300ml  
Quantity 12 per box

**Korasolv CL17**  
2191/215437



Colour Transparent  
Type Cleaner  
Capacity 250ml

**Korabond HG 17**  
2191/215441



Colour Black  
Type Primer  
Capacity 250ml

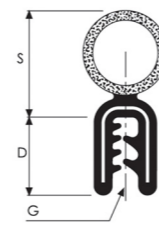
**Manual Applicator Gun, 600ml**  
2189/046



Capacity 300ml Sausages

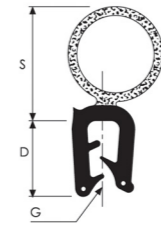
# SEALING PROFILES - BOOT SEAL & EDGE TRIM

**Top Tube Seal - 12mm**  
4833/003



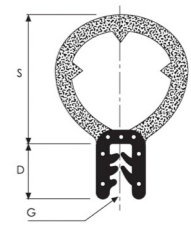
Length 25m  
Depth 12mm  
Grip Range 1 - 2mm  
Seal 16mm

**Top Tube Seal - 12mm**  
4833/0032



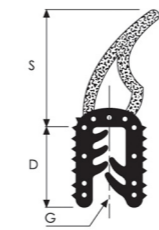
Length 25m  
Depth 12mm  
Grip Range 1 - 3.5mm  
Seal 19mm

**Top Tube Seal - 11mm**  
4873/003



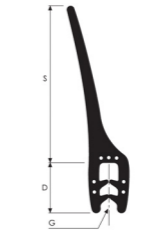
Length 25m  
Depth 11mm  
Grip Range 0.5 - 1.5mm  
Seal 25mm

**Top Tube Seal - 13mm**  
6300/001



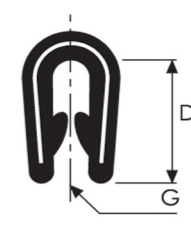
Length 50m  
Depth 13mm  
Grip Range 2 - 3mm  
Seal 17mm

**Top Leaf Seal - 12mm**  
4845/001



Length 25m  
Depth 12mm  
Grip Range 1.5 - 3.5mm  
Seal 41mm

**Edge Trim - 12mm**  
4896/002



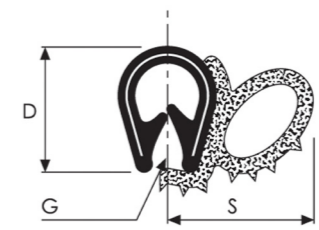
Length 50m  
Depth 12mm  
Grip Range 0.7 - 2.5mm

**Edge Trim - 8mm**  
4901/001



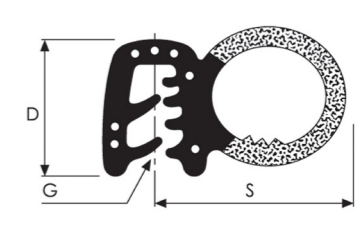
Length 50m  
Depth 8mm  
Grip Range 0.5 - 1.5mm

**Side Tube Seal - 10mm**  
6272/001



Length 25m  
Depth 10mm  
Grip Range 2 - 3mm  
Seal 14mm

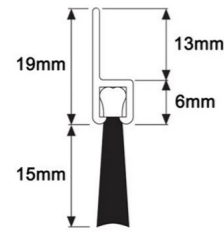
**Side Tube Seal - 12mm**  
6279/001



Length 50m  
Depth 12mm  
Grip Range 1.5 - 2.5mm  
Seal 20mm

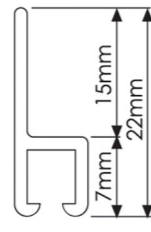
## SEALING PROFILES - BRUSH SEAL

19mm Brush Strip & Carrier  
6312/1155



Carrier	Aluminium
Length	2.5m
Depth	19mm
	13mm
	6mm
Brush Strip	Nylon 4 x 15mm

22mm Carrier  
6312/225



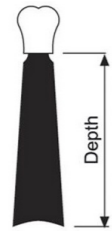
Carrier	Aluminium
Length	2.5m
Depth	22mm
	15mm
	7mm
Brush Strip	Suits 5mm

25mm Brush Strip  
6311/2255



Material	Nylon
Length	2.5m
Depth	25mm
Carrier	Suits 5mm

50mm Brush Strip  
6311/2505



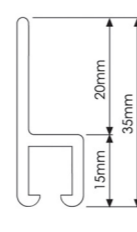
Material	Nylon
Length	2.5m
Depth	50mm
Carrier	Suits 5mm

75mm Brush Strip  
6311/2755



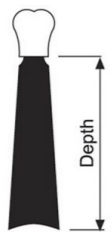
Material	Nylon
Length	2.5m
Depth	75mm
Carrier	Suits 5mm

35mm Carrier  
6312/325



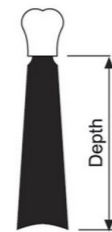
Material	Nylon
Length	2.5m
Depth	35mm
Carrier	Suits 8mm

38mm Brush Strip  
6311/3385



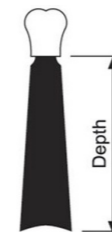
Material	Nylon
Length	2.5m
Depth	38mm
Carrier	Suits 8mm

50mm Brush Strip  
6311/3505



Material	Nylon
Length	2.5m
Depth	50mm
Carrier	Suits 8mm

101mm Brush Strip  
6311/31015



Material	Nylon
Length	2.5m
Depth	101mm
Carrier	Suits 8mm

## SHORING POLES & STRAPS

Adjustable Shoring Pole  
3000/5932



Material	Mild Steel
Finish	Zinc Plated
Length	2000/2500mm
Static Load @ Centre	460kg

Preset Shoring Bar  
3000/5933



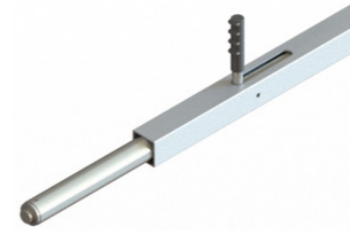
Material	Mild Steel
Finish	Zinc Plated
Length	2032/2108mm
Static Load @ Centre	460kg

Adjustable Shoring Pole - Square  
3000/603



Material	Mild Steel
Finish	Z/P, Clear Passivated
Length	2250 - 2753mm
Load Capacity	675kg
Outer Box Section	50 x 50mm

Adjustable Shoring Pole - Square  
3000/606



Material	Aluminium
Length	2250 x 2650mm
Load Capacity	300kg
Outer Tube Size	50 x 50 x 3mm

Ratchet Strap - 5000kg  
3000/5180



Material	Polyester Webbing
Length	300mm
Load Rating	Heavy Duty
Working Length	8m
Ultimate Tensile Strength	5000kg
Lashing Capacity	2500kg

Ratchet Strap - 800kg  
3000/56402



Material	Polyester Webbing
Length	500mm
Load Rating	Light Duty
Working Length	3.5m
Ultimate Tensile Strength	800kg
Lashing Capacity	400kg

Cam Buckle Strap - 1200kg  
3000/56491



Material	Polyester Webbing
Fixing	Friction Buckle
Working Length	2.5m
Ultimate Tensile Strength	1200kg
Lashing Capacity	600kg

Single Ended Sprung Loaded Pole  
3000/BS019



Type	Single Ended
Size	44mm x 2.6mm
Fits	25mm Round Track
Made To Order	

Double Ended Sprung Loaded Pole  
3000/BS020



Type	Double Ended
Size	44mm x 2.6mm
Fits	25mm Round Track
Made To Order	

## SLAM LOCKS

Slam Lock With Handle, Left Hand  
0860/001



Material Mild Steel  
Finish Zinc Plated  
Tongue Finish Malleable Iron  
Type Left Hand  
Length 86.5mm  
Width 52.5mm  
Thickness 16mm  
Tounge 16mm  
Fixing 5mm

Slam Lock With Handle, Right Hand  
0860/002



Material Mild Steel  
Finish Zinc Plated  
Tongue Finish Malleable Iron  
Type Right Hand  
Length 86.5mm  
Width 52.5mm  
Thickness 16mm  
Tounge 16mm  
Fixing 5mm

Slam Lock Striker Plate  
2276/001



Material Malleable Iron  
Finish Self Colour  
Tongue Finish Nylon  
Length 52mm  
Width 18mm  
Thickness 12.5mm  
Fixing 5.2mm

Slam Lock, Type A  
2410/001



Material Mild Steel  
Finish Zinc Plated  
Tongue Finish Malleable Iron  
Type Type A  
Length 92mm  
Width 86.5mm  
Thickness 26.5mm  
Tongue 20mm  
Fixing 7 x 14mm

Slam Lock, Type B  
2410/002



Material Mild Steel  
Finish Zinc Plated  
Tongue Finish Malleable Iron  
Type Type B  
Length 92mm  
Width 86.5mm  
Thickness 26.5mm  
Tongue 20mm  
Fixing 7 x 14mm

Nose Down End Slam Bolt  
0486/16-1-3433



Material Mild Steel  
Finish Z/P, Clear Passivated  
Type Nose Down  
Length 56mm  
Width 50mm  
Thickness 28mm  
Tongue 12mm  
Fixing 4mm

Flush Pull Latch  
0810/001



Material Polypropylene  
Finish Black  
Diameter 61.5mm  
Grip 26.5mm

Ring Tail Slam Bolt  
2467/001



Material Mild Steel  
Finish Z/P, Clear Passivated  
Length 34mm  
Width 40mm  
Depth 17mm  
Fixing 2 x 5mm

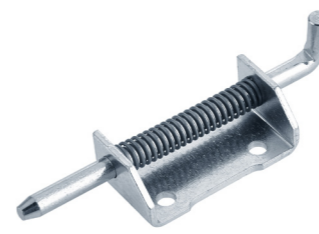
Slam Lock - No Handle  
9800/2056



Material Mild Steel  
Finish Zinc Plated  
Tongue Material Zinc Die-Cast  
Length 88mm  
Width 68.5mm  
Thickness 18.5mm  
Tongue 11mm  
Fixing 5.5mm

## SPRING BOLTS

Right Hand - Ø5/12mm  
0486/12-1-3862



Material Mild Steel  
Finish 304 Stainless Steel  
Type Right Hand  
Fixing 4 x 4mm  
Length 82mm  
Width 21mm  
Height 14mm  
Stroke 12mm  
Pin Diameter 5mm

Left Hand - Ø5/12mm  
0486/12-1-3863



Material Mild Steel  
Finish 304 Stainless Steel  
Type Left Hand  
Fixing 4 x 4mm  
Length 82mm  
Width 21mm  
Height 14mm  
Stroke 12mm  
Pin Diameter 5mm

Base Retaining - Ø10/29mm  
0839/100



Material 304 Stainless Steel  
Finish 304 Stainless Steel  
Type Base Retaining  
Fixing 4 x 5mm  
Length 59.5mm  
Width 30mm  
Height 50.5mm  
Stroke 30.5mm  
Pin Diameter 10mm

Peg Retaining - Ø12.5/29mm  
0837/020



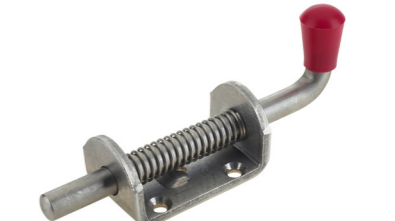
Material 304 Stainless Steel  
Finish 304 Stainless Steel  
Type Peg Retaining  
Fixing 4 x 10mm  
Length 75.5mm  
Width 40mm  
Height 63mm  
Stroke 29mm  
Pin Diameter 12.5mm

Base Retaining - Ø10/34mm  
0839/002



Material 304 Stainless Steel  
Finish 304 Stainless Steel  
Type Base Retaining  
Fixing 4 x 6.5mm  
Length 72mm  
Width 39.5mm  
Height 56mm  
Stroke 34mm  
Pin Diameter 10mm

Base Retaining - Ø12.5/28.5mm  
0843/001



Material 304 Stainless Steel  
Finish 304 Stainless Steel  
Type Base Retaining  
Fixing 4 x 11mm  
Length 76mm  
Width 41.5mm  
Height 69mm  
Stroke 28.5mm  
Pin Diameter 12.5mm

Shoot Bolt - Ø19/25mm  
0838/0021



Material Mild Steel  
Finish Self Colour  
Type Weld On  
Length 79.5mm  
Width 38mm  
Stroke 25mm  
Pin Diameter 19mm

Spring Bolt Cover - Black  
0837/010



Material PVC Moulding  
Finish Black  
Length 76.5mm  
Width 43mm  
Height 41mm  
Pin Diameter 13mm

Spring Bolt Cover - Red  
0837/011

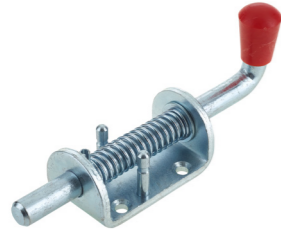


Material PVC Moulding  
Finish Red  
Length 76.5mm  
Width 43mm  
Height 41mm  
Pin Diameter 13mm



## SPRING BOLTS

Peg Retaining - Ø12.5/29mm  
0837/001



**Material** Mild Steel  
**Finish** Zinc Plated  
**Type** Peg Retaining  
**Fixing** 4 x 10mm  
**Length** 73.5mm  
**Width** 40mm  
**Height** 63mm  
**Stroke** 29mm  
**Pin Diameter** 12.5mm

Base Retaining - Ø10/34mm  
0839/001



**Material** Mild Steel  
**Finish** Z/P Clear Passivated  
**Type** Base Retaining  
**Fixing** 4 x 6.5mm  
**Length** 73mm  
**Width** 40mm  
**Height** 57.5mm  
**Stroke** 34mm  
**Pin Diameter** 10mm

Base Retaining - Ø12.5/51mm  
0841/001



**Material** Mild Steel  
**Finish** Zinc Plated  
**Type** Base Retaining  
**Fixing** 4 x 7mm  
**Length** 118mm  
**Width** 40mm  
**Height** 94mm  
**Stroke** 51mm  
**Pin Diameter** 12.5mm

Base Retaining - Ø16/62.5mm  
0840/002



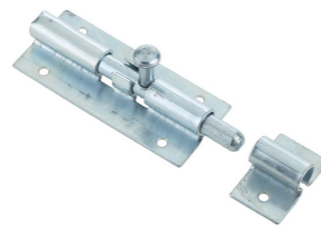
**Material** Mild Steel  
**Finish** Z/P, Clear Passivated  
**Type** Base Retaining  
**Fixing** 4 x 6mm  
**Length** 141mm  
**Width** 41mm  
**Height** 170mm  
**Stroke** 62.5mm  
**Pin Diameter** 16mm

End Slam Bolt - 127.5 x 51.5mm  
0833/001



**Material** Mild Steel  
**Finish** Z/P, Clear Passivated  
**Length** 127.5mm  
**Width** 51.5mm  
**Thickness** 39.5mm  
**Tongue** 15.6mm  
**Fixing** 7mm

Spring Bolt - Ø8/14mm  
0853/011



**Material** Mild Steel  
**Finish** Z/P, Clear Passivated  
**Fixing** 6 x 3.5mm  
**Length** 77mm  
**Width** 32.5mm  
**Height** 29mm  
**Stroke** 14mm  
**Pin Diameter** 8mm

Nose Down Bolt - 56 x 50mm  
0486/16-1-3433



**Material** Mild Steel  
**Finish** Z/P, Clear Passivated  
**Type** Nose Up  
**Length** 56mm  
**Width** 50mm  
**Thickness** 28mm  
**Tongue** 12mm  
**Fixing** 4mm

Nose Up Bolt - 56 x 50mm  
0486/16-1-3628



**Material** Mild Steel  
**Finish** Z/P, Clear Passivated  
**Type** Nose Down  
**Length** 56mm  
**Width** 50mm  
**Thickness** 28mm  
**Tongue** 12mm  
**Fixing** 4mm

Lightweight Shoot Bolt - Ø7/15mm  
0486/16-1-3647



**Material** Mild Steel  
**Finish** Z/P, Clear Passivated  
**Type** Bolt On  
**Fixing** 2 x 5mm  
**Length** 43.5mm  
**Width** 11mm  
**Stroke** 15mm  
**Pin Diameter** 7mm  
**End Plate Dimensions** 35 x 11 x 2mm

## STEPS

Folding Access Step  
0979/007



**Material** 304 Stainless Steel  
**Finish** Chrome Polished  
**Length** 138mm  
**Width** 120mm  
**Depth** 113mm  
**Fixings** 10mm

Recessed Access Step  
4280/001



**Material** Cast Aluminium  
**Finish** Polished  
**Length** 165mm  
**Width** 140mm  
**Depth** 96mm  
**Fixings** 6mm

Recessed Access Step - Moulded  
9000/9/00950



**Material** Glass Reinforced Nylon  
**Finish** Black  
**Length** 165mm  
**Width** 142mm  
**Depth** 97.5mm  
**Fixings** 5mm

Slide Out Step - Manual  
5327/002



**Material** Aluminium  
**Finish** Anodised  
**Length** 312mm  
**Width** 485mm

Retractable Underbody Access Step  
5327/101



**Material** Aluminium  
**Finish** Anodised  
**Width** 550mm  
**Depth** 216mm

Motorised Underbody Access Step  
5327/1201\*



**Voltage** 12V  
**Material** Aluminium  
**Finish** Anodised  
**Width** 552mm  
**Depth** 156mm

Folding Access Step  
0974/001



**Material** Mild Steel  
**Finish** Zinc Plated  
**Length** 110mm  
**Width** 94mm  
**Depth** 105mm  
**Fixings** 8mm

Folding Access Step - Large  
0974/006



**Material** Mild Steel  
**Finish** Zinc Plated  
**Length** 188.5mm  
**Width** 178.5mm  
**Depth** 194mm  
**Fixings** 6.5mm

E-Cote Black Folding Step  
0979/008



**Material** Mild Steel  
**Finish** Black E-cote  
**Length** 120mm  
**Width** 108mm  
**Depth** 95mm  
**Fixings** 8.5mm

## SWORD PINS / PINS & CHAIN

Sword Pin - Ø9.5 x 63mm  
1055/2054



Material Mild Steel  
Finish Z/P, Clear Passivated  
Tip Finish Stainless Steel  
Ring Diameter 32mm  
Chain Length 200mm  
Pin Diameter 9.5mm  
Pin Size 63mm

Sword Pin - Ø12.5 x 88mm  
1055/3080



Material Mild Steel  
Finish Z/P, Clear Passivated  
Tip Finish Stainless Steel  
Ring Diameter 39.5mm  
Chain Length 200mm  
Pin Diameter 12.5mm  
Pin Size 88mm

Sword Pin - Ø12.5 x 102mm  
1055/3092



Material Mild Steel  
Finish Z/P, Clear Passivated  
Tip Finish Stainless Steel  
Ring Diameter 39.5mm  
Chain Length 200mm  
Pin Diameter 12.5mm  
Pin Size 102mm

Sword Pin - Ø16 x 112mm  
1055/4100



Material Mild Steel  
Finish Z/P, Clear Passivated  
Tip Finish Stainless Steel Tip  
Ring Diameter 39.5mm  
Chain Length 200mm  
Pin Diameter 16mm  
Pin Size 112mm

Cotter Pin & Chain 109 x Ø9.5mm  
2582/002



Material Mild Steel  
Finish Zinc Plated  
Cotter Length 109mm  
Ring Diameter 32mm  
Chain Length 195mm  
Pin Diameter 9.5mm

Cotter Pin & Chain 138 x Ø9.5mm  
2582/007



Material Mild Steel  
Finish Zinc Plated  
Cotter Length 138mm  
Ring Diameter 40mm  
Chain Length 195mm  
Pin Diameter 9.5mm

Linch Pin - Ø6 x 45mm  
1056/001



Material Mild Steel  
Finish Z/P, Yellow Passivated  
Ring Diameter 46mm  
Pin Diameter 6mm  
Pin Size 45mm

Linch Pin - Ø11 x 44.5mm  
1056/003



Material Mild Steel  
Finish Z/P, Yellow Passivated  
Ring Diameter 52mm  
Pin Diameter 11mm  
Pin Size 44.5mm

Linch Pin & Wire Tag - Ø8 x 45mm  
1056/902



Material Mild Steel  
Finish Z/P, Yellow Passivated  
Pin Diameter 8mm  
Pin Size 45mm  
Wire Tag 200mm

## TACK ROOM

Clip-On Saddle Rack - Single  
1551/007



Height 16cm  
Width 11cm  
Depth 46cm  
Weight 0.6kg

Clip-On Saddle Rack - Twin  
1551/008



Height 46cm  
Width 11cm  
Depth 46cm  
Weight 1.3kg

Clip-On Saddle Rack - Triple  
1551/009



Height 77cm  
Width 11cm  
Depth 46cm  
Weight 2kg

Clip-On Saddle Rack - Quadruple  
1551/010



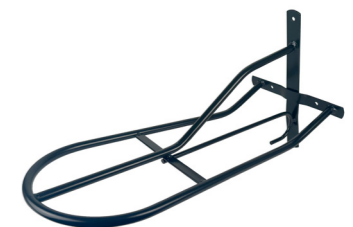
Height 108cm  
Width 11cm  
Depth 46cm  
Weight 2.65kg

Harness Saddle Hook  
1551/011



Height 27cm  
Width 25cm  
Depth 54cm  
Weight 1.52kg

Saddle Rack  
1555/003



Finish Black  
Length 650mm  
Height 350mm  
Width 300mm  
Weight 900g

Fold Down Saddle Rack  
1555/004



Finish Black  
Length 450mm  
Height 200mm  
Width 100mm  
Weight 810g

Rug Rail  
1555/005



Finish Black  
Length 900mm  
Height 250mm  
Width 200mm  
Weight 860g

Bridle Bracket  
1555/006



Finish Black  
Length 150mm  
Width 150mm  
Depth 100mm  
Weight 180g

## TACK ROOM

Single Coat Hook  
2987/0051



Material Plastic Moulding  
Finish Black  
Type Single  
Fixing 1 x 5mm  
Length 51mm  
Width 34mm  
Thickness 19mm

Double Coat Hook  
2987/0061



Material Plastic Moulding  
Finish Black  
Type Double  
Fixing 2 x 5mm  
Length 51mm  
Width 60mm  
Thickness 19mm

Screw On Coat Hook  
1021/011



Material Mild Steel  
Finish Zinc Plated  
Type Screw On  
Fixing 2 x 7mm Countersunk  
Length 89mm  
Width 20mm  
Height 41mm

Lightweight Coat Hook  
1021/101



Material Mild Steel  
Finish Zinc Plated  
Type Screw On  
Fixing 2 x 5mm  
Length 62mm  
Width 19mm  
Thickness 20mm  
Height 20mm

Aluminium Hook  
1555/001



Material Aluminium  
Length 125mm  
Fixing 3/4 BZP Screws

Black Hook (Set of 5)  
1555/002



Finish Black  
Length 100mm

Coat Hook  
1021/200



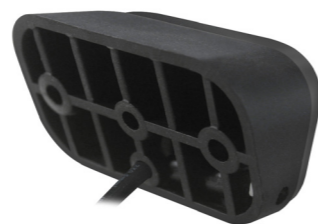
Material 316 Stainless Steel  
Finish Polished

Clearance/Scene Lamp - White  
6500/7705WM



Length 77mm  
Height 44mm  
Depth 22mm  
Voltage 12/24V  
LEDs 3 x 1.5W  
Raw Lumens 570lm  
Effective Lumens 302lm  
Colour Temperature 6000K

Angled Rubber Mounting Pad  
6500/7705RP3



Material Rubber  
Angle 30°

## TAPE

Conspicuity Tape - Red  
4820/501



Finish Red  
Type Continuous  
Length 50m  
Width 50mm  
Conforms To ECE 104 Class C  
Custom Logo Minimum 10 Rolls

Conspicuity Tape - Amber  
4820/502



Finish Amber  
Type Continuous  
Length 50m  
Width 50mm  
Conforms To ECE 104 Class C  
Custom Logo Minimum 10 Rolls

Conspicuity Tape - White  
4820/503



Finish White  
Type Continuous  
Length 50m  
Width 50mm  
Conforms To ECE 104 Class C  
Custom Logo Minimum 10 Rolls

Anti-Slip Tape - Black  
0458/0061



Colour Black  
Width 60mm  
Roll Length 18m

Rubber Resin Tape  
6476/00426



Width 25mm  
Thickness 1mm  
Roll Length 20m

Double Sided Foam Tape  
3233/5025



Width 25mm  
Thickness 1.6mm  
Roll Length 50m

Non-Abrasive Anti-Slip Tape  
0458/001



Colour Black  
Width 50mm  
Roll Length 18.3m

Waterproof Anti-Slip Tape  
0458/003



Colour Black  
Width 50mm  
Roll Length 18.3m

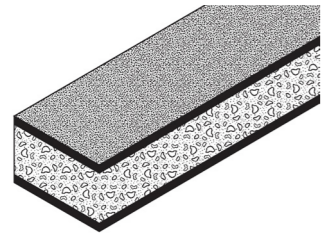
Photoluminescent Tape - Blue  
0458/002



Colour Blue  
Width 50mm  
Length 10m

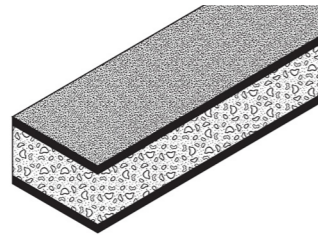
## TAPE - SINGLE SIDE FOAM

Sponge Strip - 13 x 6mm  
3216/0321



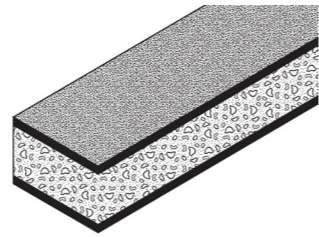
Width 13mm  
Thickness 6mm  
Roll Length 15m

Sponge Strip - 19 x 3mm  
3216/050



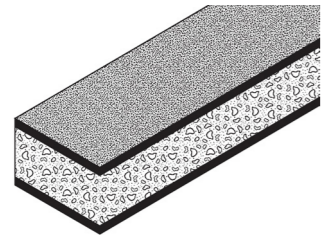
Width 19mm  
Thickness 3mm  
Roll Length 15m

Sponge Strip - 19 x 6mm  
3216/0521



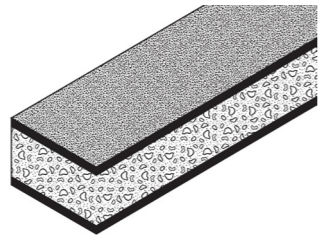
Width 19mm  
Thickness 6mm  
Roll Length 15m

Sponge Strip - 19 x 13mm  
3216/055



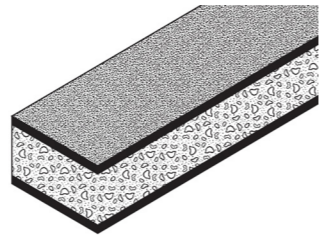
Width 19mm  
Thickness 13mm  
Roll Length 7m

Sponge Strip - 25 x 3mm  
3216/0701



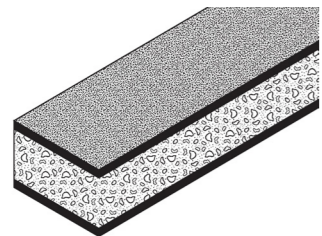
Width 25mm  
Thickness 3mm  
Roll Length 15m

Sponge Strip - 25 x 6mm  
3216/0721



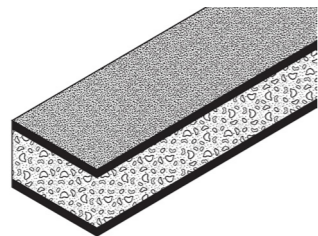
Width 25mm  
Thickness 6mm  
Roll Length 15m

Sponge Strip - 25 x 25mm  
3216/078



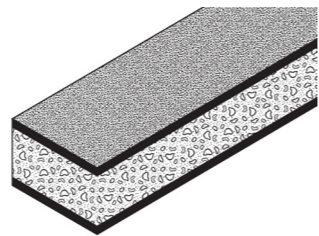
Width 25mm  
Thickness 25mm  
Roll Length 4m

Sponge Strip - 25 x 13mm  
3216/0791



Width 25mm  
Thickness 13mm  
Roll Length 7m

Sponge Strip - 10 x 6mm  
3216/013\*



Width 10mm  
Thickness 6mm  
Roll Length 15m

## TRACK & WINDOW

1806 Cargo Track - Z/P  
3000/1806



Material Mild Steel  
Finish Zinc Plated  
Length 3050mm  
Width 84mm  
Thickness 2.5mm  
Diameter 25.4mm  
Fixing 6.5mm

1805 Cargo Track - Galvanised  
3000/595



Material Pressed Steel  
Finish Galvanised  
Length 3048mm  
Width 67mm  
Thickness 1.5mm  
Diameter 25mm  
Fixing 4mm

Flat Track - Aluminium  
3000/605



Material Aluminium  
Length 2993mm  
Width 50mm  
Holes 25mm

Flat Track - Z/P  
3000/604



Material Zinc Plated  
Length 2993mm  
Width 50mm  
Holes 25mm

Captive Track - Aluminium  
3000/600



Material Aluminium  
Length 2997mm  
Width 42mm  
Holes 9.5mm

Captive Ring  
3000/601



To Suit 3000/600

Cargo Track End Piece  
3000/602



Colour Silver

Cargo Track End Cap  
3000/5961\*



Colour Suitable For Grey  
1806 Track

Black Window  
9911/0894



Material Aluminium  
Finish Black  
Height 519mm  
Width 420mm

## VENTILATORS - FIXED

Roof Top Vent - 265mm  
0623/001



Material Zinc Die-Cast  
Colour Black  
Length 265mm  
Width 212mm  
Depth 30mm

Roof Hatch Vent - 280mm  
0638/0023\*



Material Moulded Plastic  
Colour Cream  
Length 280mm  
Width 280mm  
Depth 78mm

Roof Hatch Vent - 420mm  
0638/004



Material Moulded Plastic  
Colour Cream  
Length 420mm  
Width 380mm  
Depth 76mm

Roof Hatch Vent Fly Screen  
0638/005



Material Moulded Plastic  
Colour Cream  
Length 336mm  
Width 298mm

Horizontal Vent  
2548/005S



Material Stainless Steel  
Finish Polished  
Length 120mm  
Height 66mm  
Thickness 1mm

Louvre Trickle Vent - 3 Slots  
2548/001



Material Aluminium  
Colour Self Colour  
Length 191mm  
Width 135mm  
Depth 1mm

Louvre Trickle Vent - 16 Slots  
2548/002



Material Aluminium  
Colour Self Colour  
Length 241mm  
Width 166mm  
Depth 1mm

Louvre Vent - 5 Slots  
2548/016\*



Material Stainless Steel  
Length 127mm  
Width 115mm

Floor Vent  
2527/101



Material Polypropylene  
Finish White  
Length 75mm  
Width 75mm  
Depth 75mm

## VENTILATORS

CentaFlow™ LP Vent - Black  
2527/006



Brand CentaFlow™  
Material ABS  
Colour Black  
Width 319mm  
Depth 68mm  
Roof Thickness 1-21mm

Mushroom Vent - White  
2527/020



Colour White  
Aperture 110mm  
Roof Thickness 25-50mm

Rooftop Duct Vent - White  
2527/011



Material ASA Plastic  
Colour White  
Length 285mm  
Width 191mm  
Depth 50mm

CentaFlow™ Classic Vent - Black  
2527/004



Material ABS Plastic  
Colour Black  
Length 240mm  
Width 240mm  
Depth 162mm

CentaFlow™ Vent - White  
2527/222



Material ABS Plastic  
Colour White  
Length 220mm  
Width 220mm  
Depth 60mm

Electric Roof Vent - White  
1920/350



Colour White  
Voltage 12V  
Power 15W  
Noise Level 47DB

Mushroom Vent - Light Grey  
2527/030



Colour Light Grey  
Voltage 12V

Easy Open Vents  
0623/EOVSHPKIT



Material Aluminium  
Length 350mm  
Width 210mm  
Depth 96.5mm

Side Vent  
2527/CMC42290KIT



Material ABS Plastic  
Height 267mm  
Width 246.5mm  
Depth 106mm

## WINGS, FITMENTS & BODY MOUNTING BRACKETS

Body Mounting Bracket - 0714  
6033/0714



Material	Mild Steel
Finish	Black Powder Coated
Length	124mm
Width	61.5mm
Height	57mm
Thickness	5mm
Holes	2 x 11mm
Slot	14 x 28mm

Body Mounting Bracket - 02314  
6033/02314



Material	Mild Steel
Finish	Black Powder Coated
Length	94mm
Width	61mm
Height	60mm
Thickness	5.5mm
Holes	2 x 11.5mm
Slot	14 x 28mm

Bearer Bracket - 4040  
6033/4040



Material	Mild Steel
Finish	Galvanised
Length	189.5mm
Width	38mm
Height	38mm
Thickness	4mm
Holes	8 x 7mm

Bearer Bracket - 5050  
6033/5050



Material	Mild Steel
Finish	Galvanised
Length	190mm
Width	49mm
Height	49mm
Thickness	5mm
Holes	8 x 8.5mm

Cranked Mudguard Wing Stay  
3029/7800



Type	Cranked
Length	800mm
Width	34mm

Adjustable Wing Stay Bracket  
6688/570515005



Bracket Material	Polyamide 6
Eyelet Material	Acetal
To Suit	34mm Wing Stay

Conventional Mudguards



- Mudguards for every application
- UV stabilised polypropylene copolymer
- Scratch resistant proprietary surface

Size range  
• 890 - 1340mm

Spraybuster



- Mudflaps with homologated anti-spray
- Scratch resistant proprietary surface
- Supplied with mounting fasteners

Sizes  
• 412 x 780mm  
• 508 x 780mm  
• 604 x 780mm

Mudflaps



Size Available	• 24" x 18"
• 16" x 12"	• 22" x 16"
• 18" x 12"	• 20" x 18"
• 20" x 12"	• 21" x 18"
• 21" x 12"	• 22" x 18"
• 22" x 12"	• 12" x 12"
• 18" x 16"	• 24" x 12"
• 20" x 16"	• 24" x 16"
• 21" x 16"	• 15" x 18"



# SAFE ASSIST

CONCEALED • CABLE-LESS • ADJUSTABLE • RAMP DOOR ASSIST

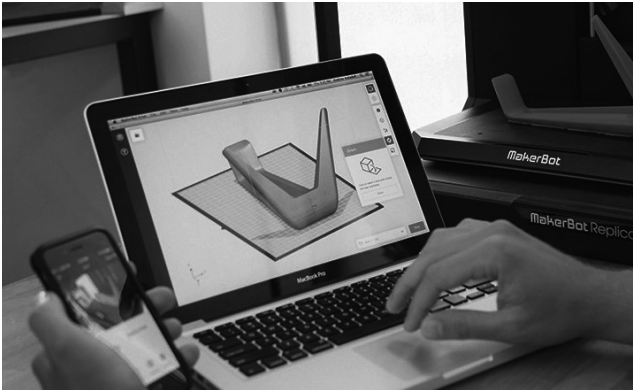
Safe Assist is a new and revolutionary product from Austin Hardware®. The lightweight, heavy-duty ramp door assist eliminates the physical strain of opening and closing heavy ramp doors by rendering the door virtually weightless. All that's required is the strength of a single finger throughout the complete motion.

### Key Features

- 100% concealed
- Adjustable
- Constructed of non-corrosive, heavy-duty aluminium
- Lightweight
- Eliminates dangerous cables
- Eliminates the physical strain and danger of a heavy ramp door
- Avoids non-linear weight distribution

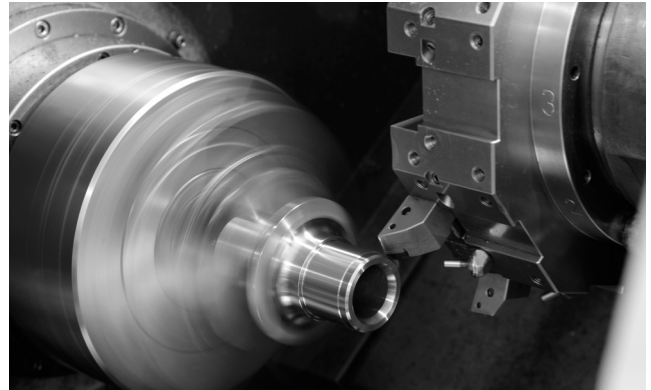
Unlike traditional ramp assists, the revolutionary new Safe Assist is fully concealed to remove the need for dangerous cables that can snap or create a tripping hazard. The heavy duty design, utilises an aluminium exterior for corrosion resistance.

# Supply Without Compromise



## Design & Rapid Prototyping

To strive to be the best is just part of our ethos at Albert Jagger, we use the latest technologies to aid our designers so that we can develop the next generation of hardware and components. We use rapid prototyping so that we can see our developing designs and improve on them.



## Manufacturing

As part of the process to ensure that we supply our customers with flexibility, versatility and diversity we have our own in-house manufacturing department. As the market leaders in our industry, we don't just supply parts, we design and manufacture them too.



## ISO 9001 Quality

We at Albert Jagger Limited recognise the need to focus on customer satisfaction and that means not only meeting their expectations but exceeding them. One of our key objectives is to continually strive to improve quality of both product and service. To achieve this we maintain quality management system compliant with ISO 9001: 2015.



## Customer Service

Our future depends on the success of our customers that is why we like to take a long term view to building relationships whilst delivering an unrivalled service and inspiring trust and confidence. With 130 years of history, we wouldn't be in the position we are if we hadn't looked after and listened to our customers.

### Head Office

Centaur Works, Green Lane,  
Walsall, West Midlands,  
WS2 8HG. United Kingdom.

### Contact

**e** [sales@albertjagger.co.uk](mailto:sales@albertjagger.co.uk)  
**t** +44 (0) 1922 471 000

[www.albertjagger.co.uk](http://www.albertjagger.co.uk)