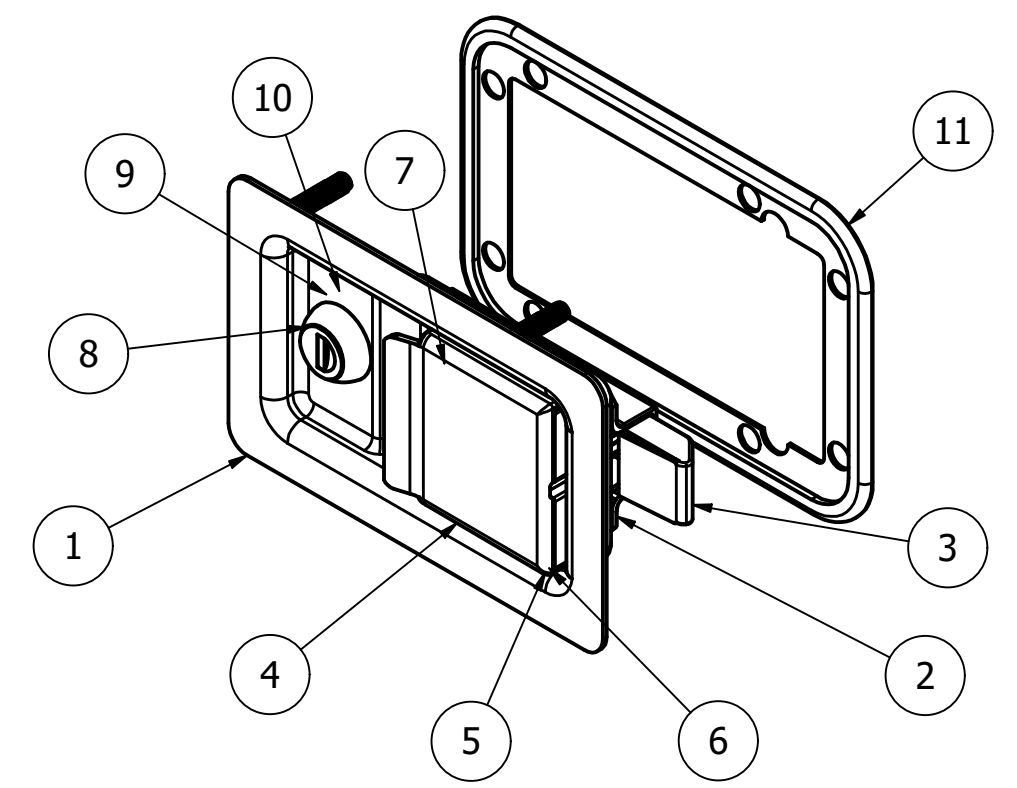


PARTS LIST			
ITEM	QTY	PART NUMBER	DESCRIPTION
1	1	0907-213-1	M/STEEL-ZINC PLATED PRESSED PLATE-Z/C PASSIVATE
2	1	0907-213-2	M/STEEL- ZINC PLATED TONGUE-Z/C PASSIVATE
3	1	0907-003-4	M/STEEL-ZINC PRESSED TONGUE-Z/C PASSIVATE
4	1	0907-003-5	M/STEEL-ZINC PRESSED PADDLE HANDLE-Z/C PASSIVATE
5	1	0907-005-4	M/STEEL-RIVIT BOLT
6	1	0907-005-6	M/STEEL - ZINC PLATED RIVIT-Z/C PASSIVATE
7	1	0907-005-7	STEEL SPRING
8	1	0907-011-2	ZINC PLATED LOCK BARREL
9	1	0907-011-5	M/STEEL-WASHER
10	1	0907-011-4	M/STEEL BOLT NUT
11	1	0907-005-9	BLACK PLASTIC GASKET



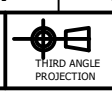
1	VALIDATION COMPLETE	23/07/2021	C.H
REV	DESCRIPTION	DATE	APPROVED

GENERAL TOLERANCES ON LENGTHS
 0.5 - 6 ± 0.1mm
 6 - 30 ± 0.2mm
 30 - 120 ± 0.3mm
 120 - 400 ± 0.5mm
 400 - 1000 ± 0.8mm
 1000 - 2000 ± 1.2mm
 2000 - 4000 ± 2.0mm

ALBERT JAGGER LTD
 GREEN LANE
 WALSALL PHONE: 01922 471000
 WEST MIDLANDS FAX: 01922 648021
 WS2 8HG
 THIS DRAWING & THE DESIGN SHOWN ARE THE PROPERTY OF ALBERT JAGGER LTD AND MUST NOT BE USED OR COPIED BY A THIRD PARTY WITHOUT PERMISSION

DRAWN BY
S.R

CHECKED BY
C.H



SCALE
1:2

MATERIAL
SEE TABLE

MASS
N/A

FINISH
SEE TABLE

Date
23/07/2021

ALL DIMS IN MM UNLESS STATED DO NOT SCALE

A3



PADDLE LOCK -SMALL 0907 SERIES - ZINC/ZINC/PRESSED TONGUE

0907-011

Edition
1

Sheet
1 / 1