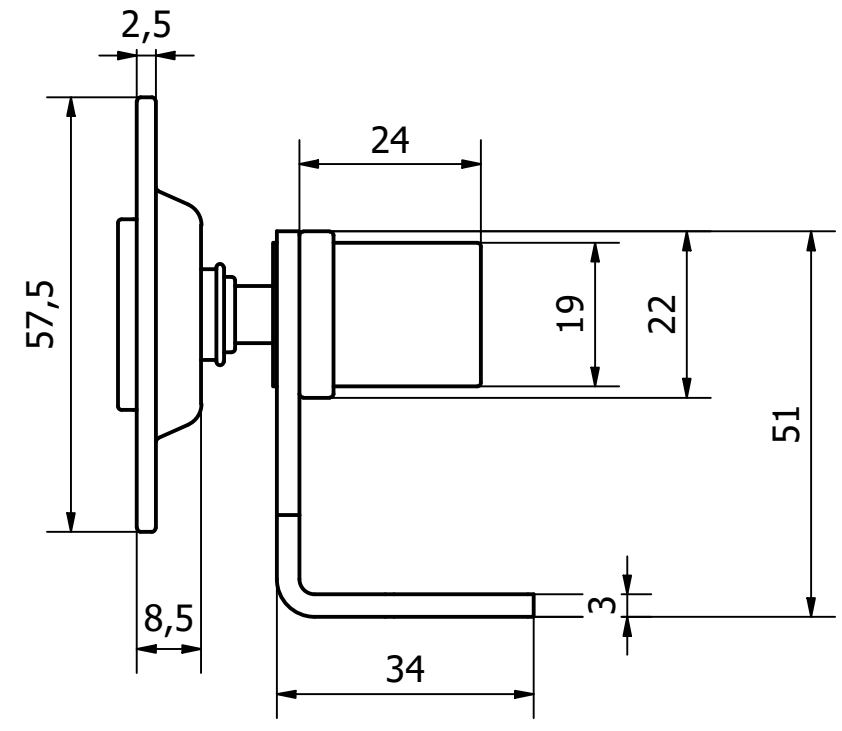
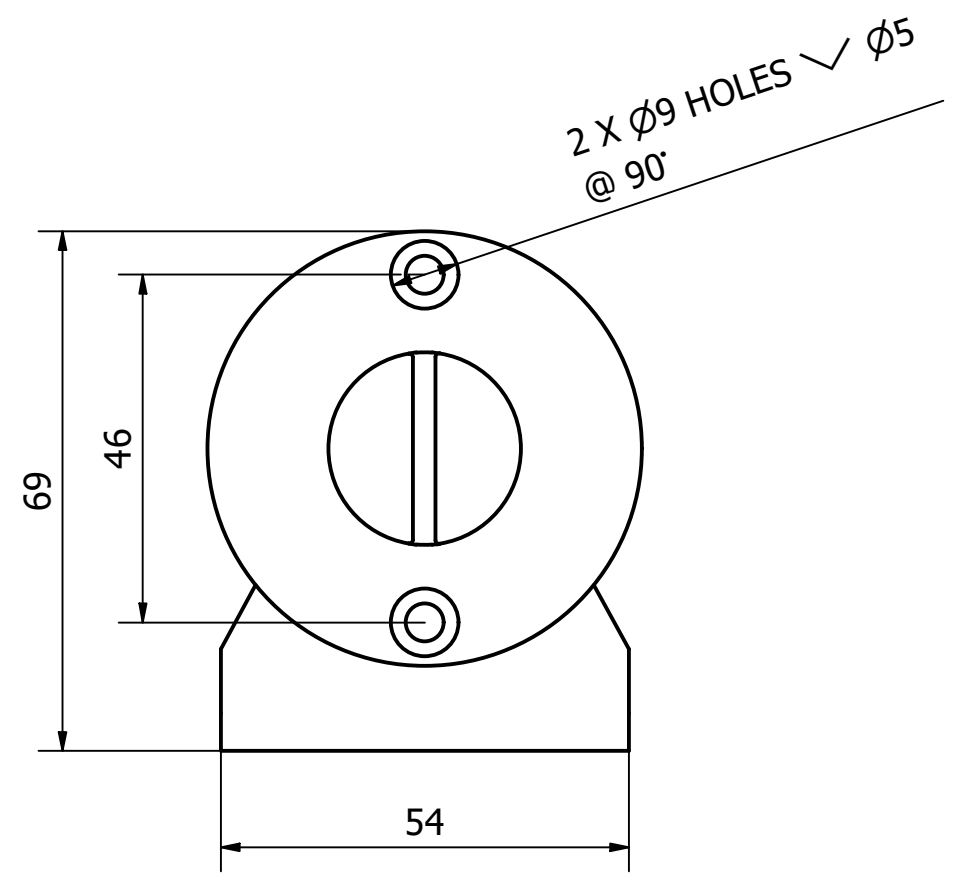
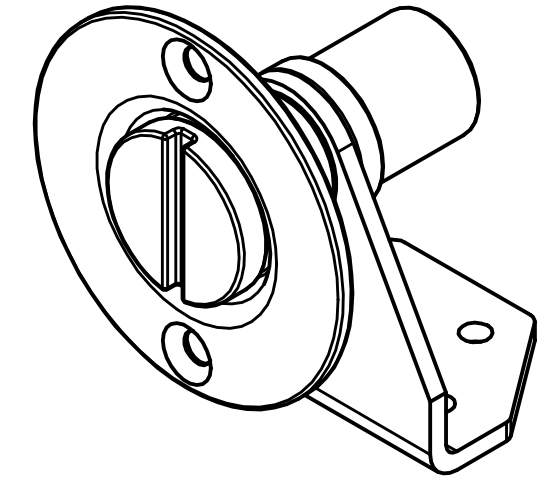
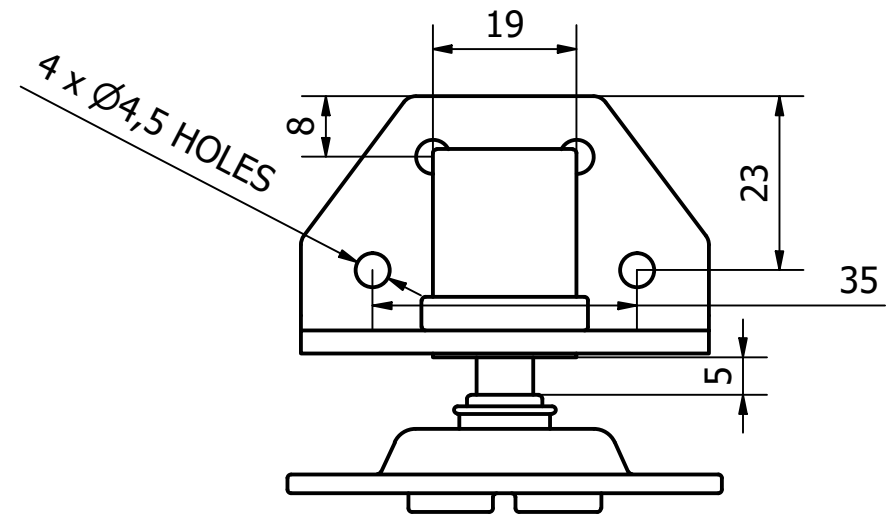


PARTS LIST			
ITEM	QTY	PART NUMBER	DESCRIPTION
1	1	2172-002-3	M/STEEL M10 THREADED PIN
2	1	2172-002-4	FLOOR TRAP MOUNTING BRACKET
3	1	2172-002-2	M/STEEL MOUNTING BRACKET BOSS
4	1	2172-002-1	M/STEEL FLOOR MOUNTING PLATE



REV	DESCRIPTION	DATE	APPROVED
2	THREAD CHANGED TO M10	12/05/2022	S.R
1	VALIDATION COMPLETE	07/01/2022	C.H
B	THREAD CHANGED TO M12	08/01/20	A.P

NOTE: 2

M10 THREAD ON PIN
 FINISH - ZINC AND CLEAR PASSIVATED JS500 8 MICRONS THICK

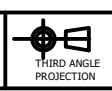
GENERAL TOLERANCES ON LENGTHS
0.5 - 6 ± 0.1mm
6 - 30 ± 0.2mm
30 - 120 ± 0.3mm
120 - 400 ± 0.5mm
400 - 1000 ± 0.8mm
1000 - 2000 ± 1.2mm
2000 - 4000 ± 2.0mm

ALBERT JAGGER LTD
 GREEN LANE
 WALSALL PHONE: 01922 471000
 WEST MIDLANDS FAX: 01922 648021
 WS2 8HG

THIS DRAWING & THE DESIGN SHOWN ARE THE PROPERTY OF ALBERT JAGGER LTD AND MUST NOT BE USED OR COPIED BY A THIRD PARTY WITHOUT PERMISSION

DRAWN BY
K.M

CHECKED BY
A.P



SCALE
1 : 1

MATERIAL
M/STEEL

MASS
0.204 kg

FINISH
Z/C
PASSIVATED

Date
04/03/2020

ALL DIMS IN MM UNLESS STATED DO NOT SCALE

A3



M/STEEL FLOOR TRAP FASTENER - M10 THREAD
 2172-002

Edition 2	Sheet 1 / 1
--------------	----------------