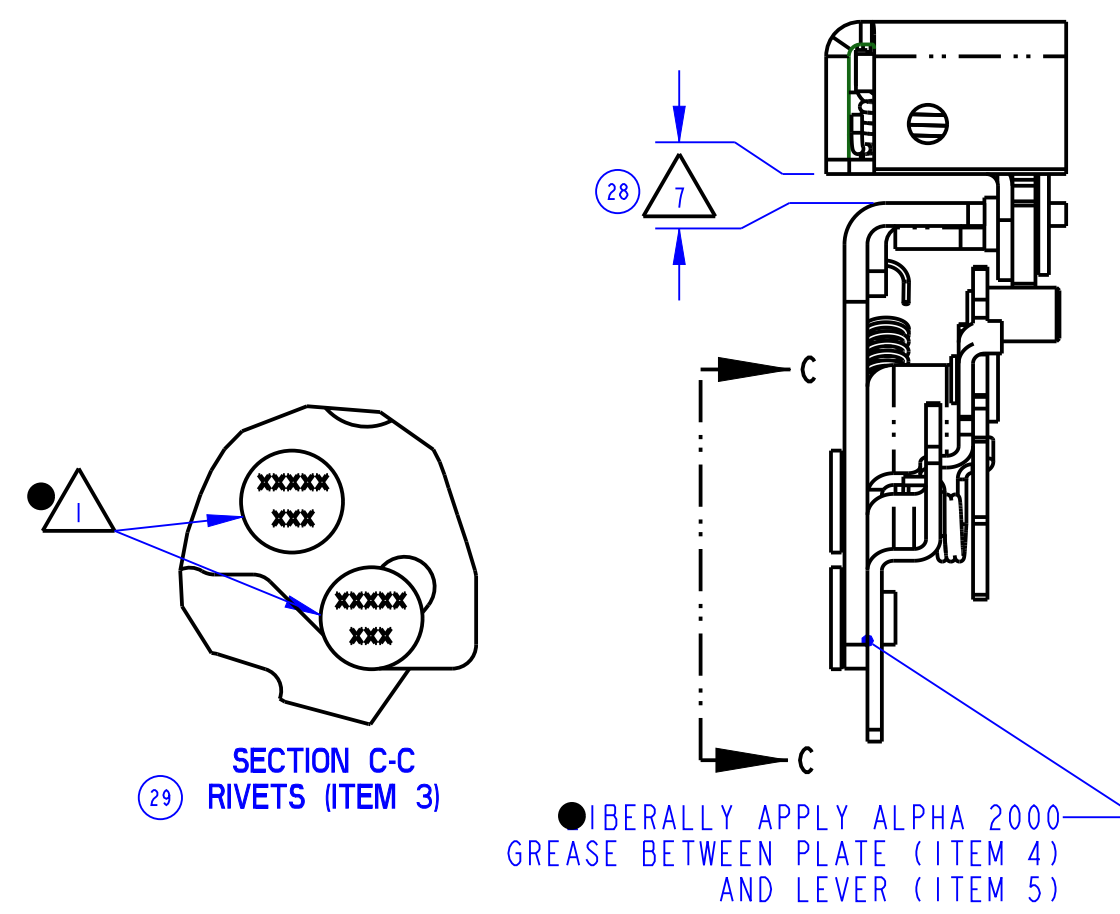
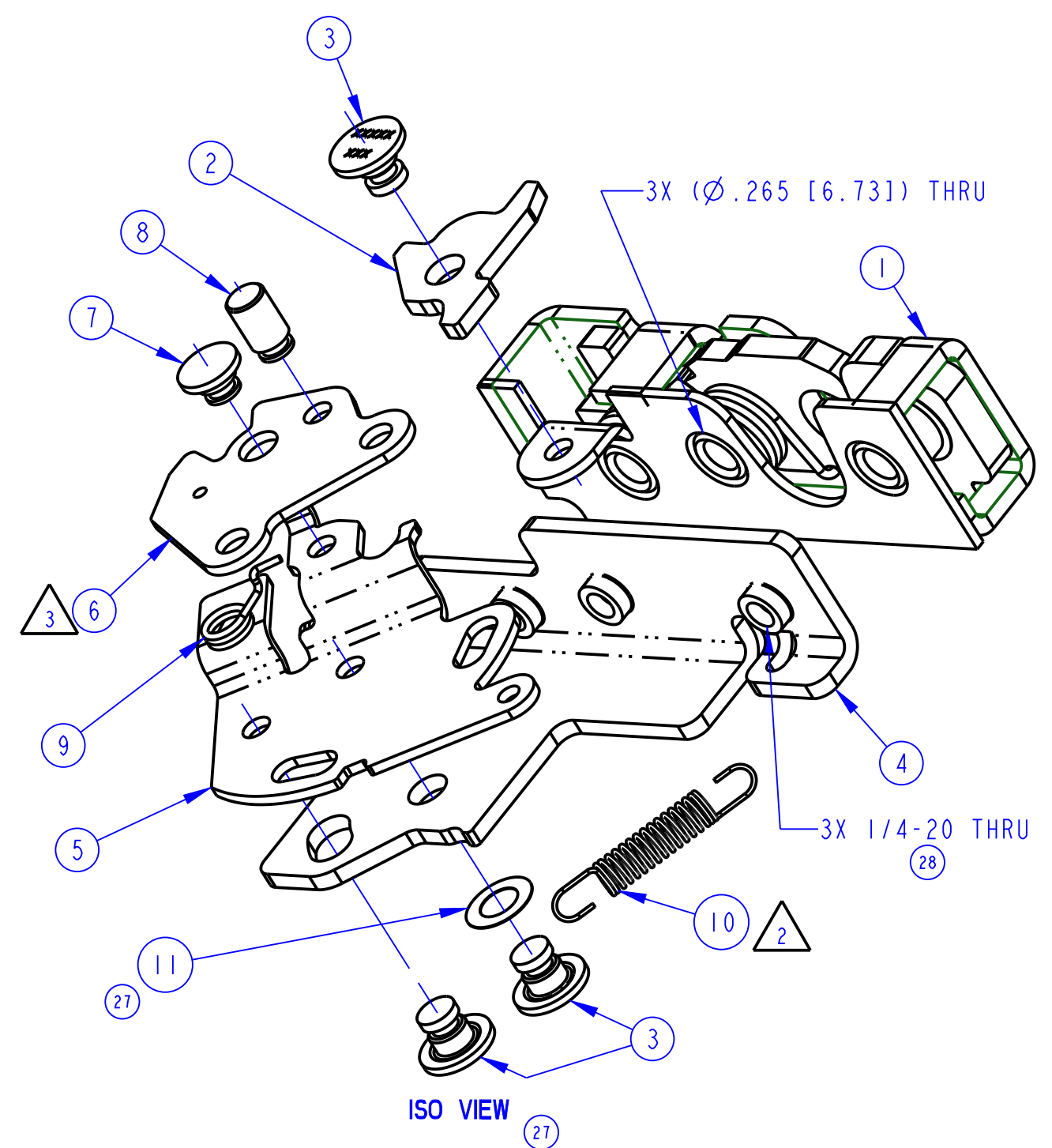
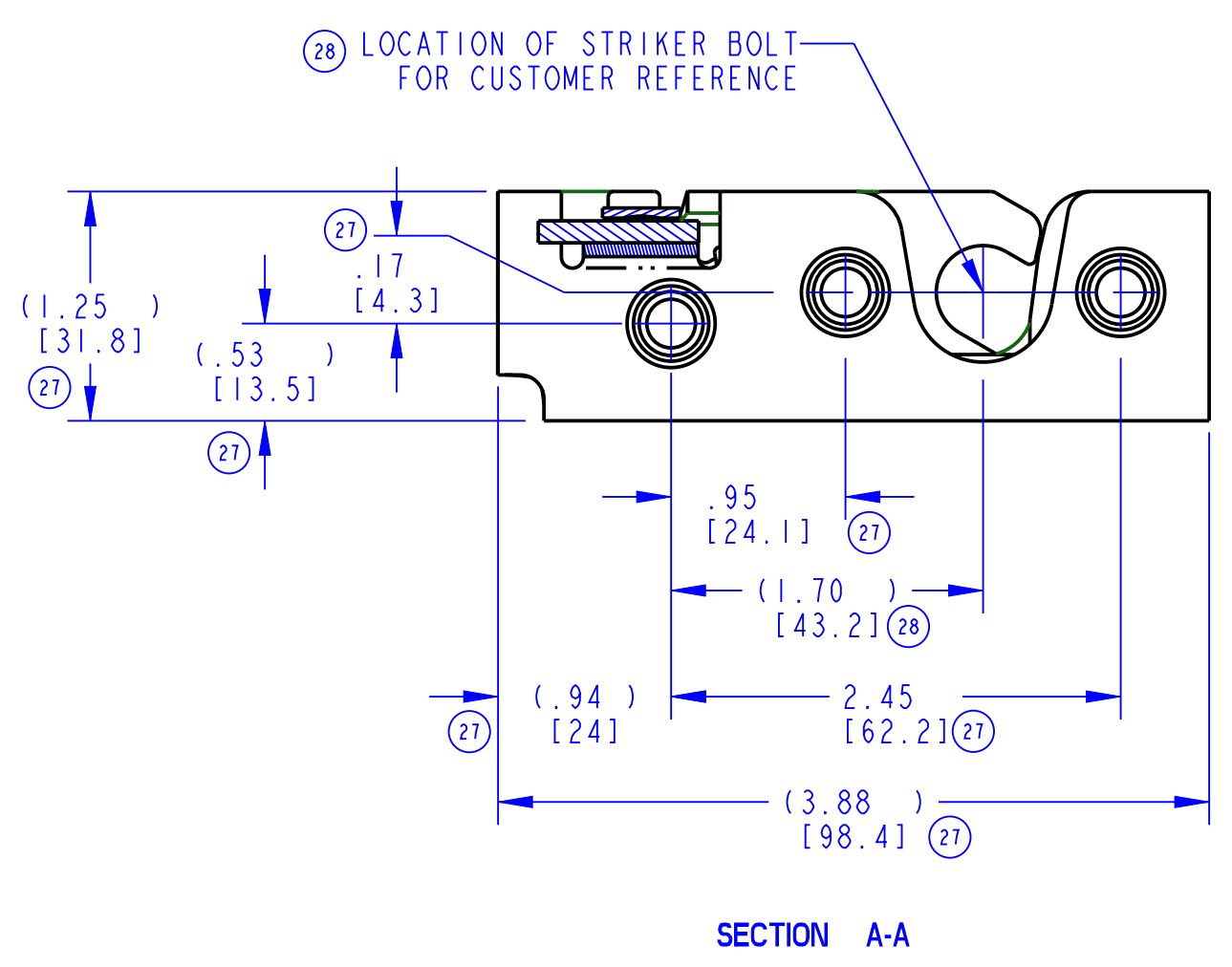
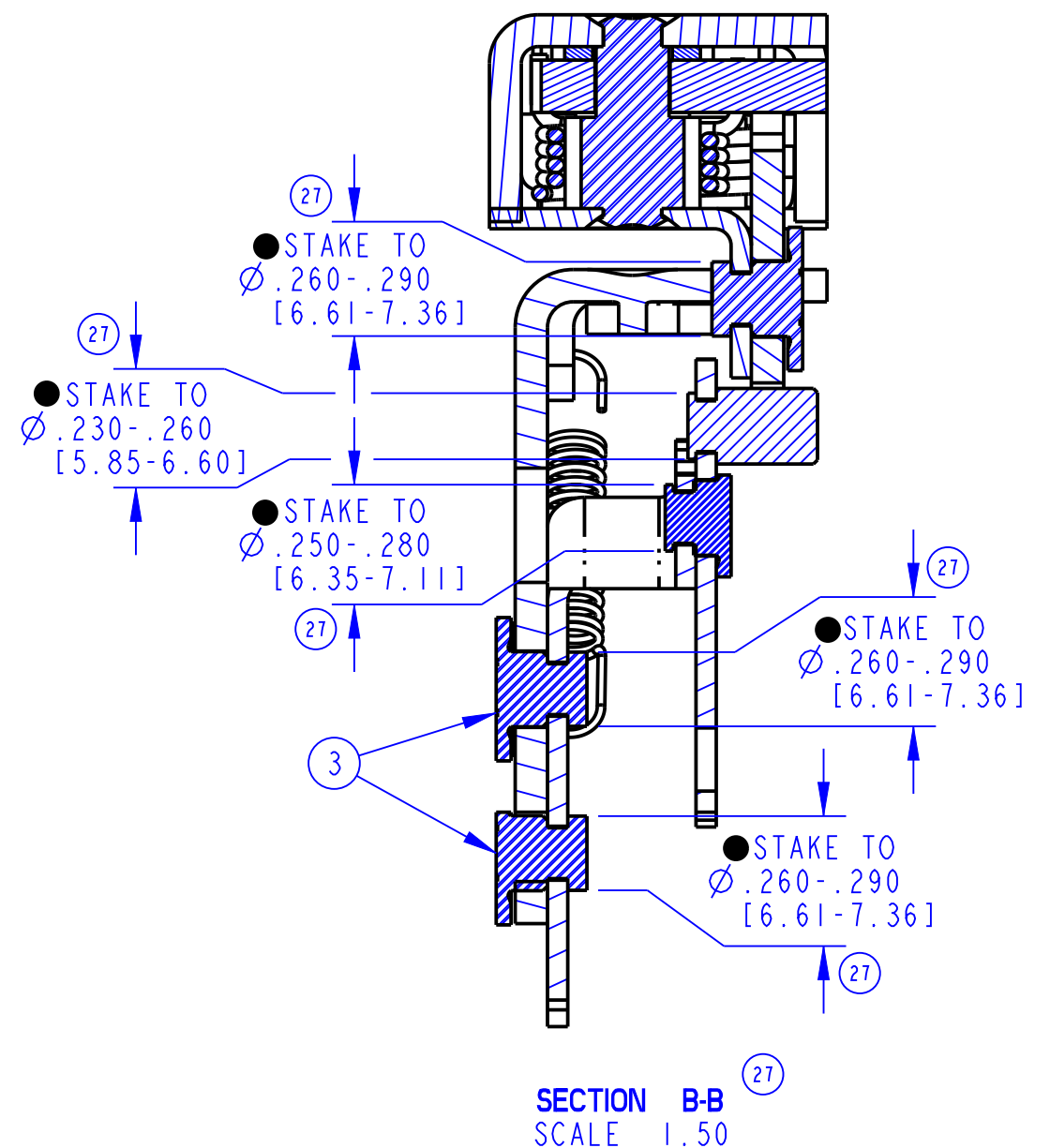
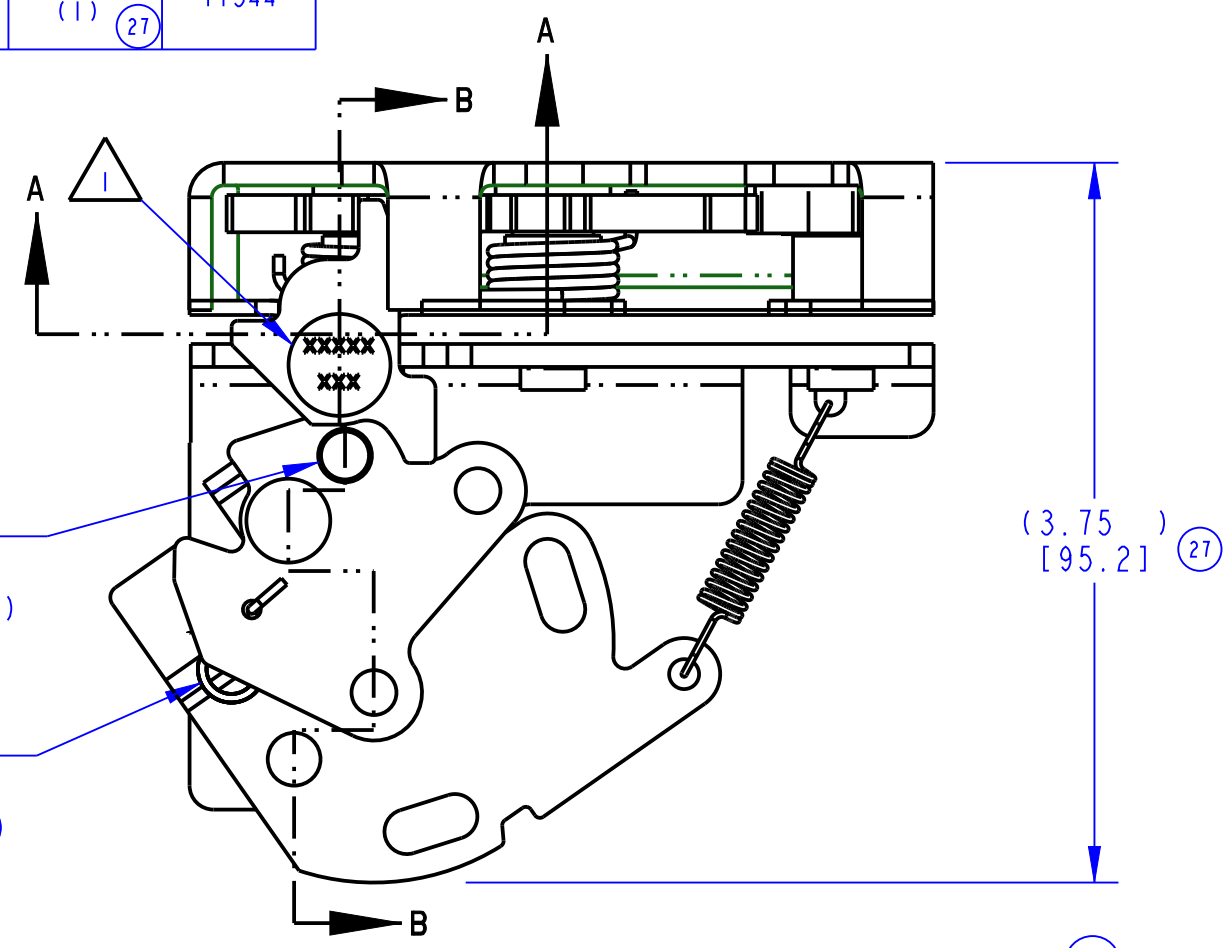


PART NUMBER	ITEM 1 BASE LATCH (QTY)	ITEM 2 LEVER (QTY)	ITEM 3 RIVET (QTY)	ITEM 4 PLATE (QTY)	ITEM 5 LEVER (QTY)	ITEM 6 LOCK ARM (QTY)	ITEM 7 RIVET (QTY)	ITEM 8 RIVET (QTY)	ITEM 9 SPRING (QTY)	ITEM 10 SPRING (QTY)	ITEM 11 WASHER (QTY)	(27) PART MARKING	REVISION	ECN	ECN BY	DESCRIPTION
11344-16	(28) (27) 0500200-64 (1)	11819-42 (1)	80635-16 (3)	81631-16 (1)	11823-16 (1)	11818-16 (1)	81133-16 (1)	81013-42 (1)	80719-57 (1)	81016-57 (1)	80950-15 (1)	(27) 11344	25	20501	MAD 7/21/05	REVISED ARROW
													26	20769	MAD 3/6/06	ADDED 80950-15; .260-.290 WAS .305-.335; UPDATE TO NEW FORMAT
													27	38761	AGJ 11/10/14	UPDATED: SIZE (C WAS B), DESC. ADDED: SECTION B-B, ISO VIEW, CR/PR DIMS, PART MARKING COLUMN, NOTES 4-6. 80950-15 QTY IS (1) WAS (2).
													28	39355	GDE 2016-03-28	ADDED: NOTES (7,8) (SPACER), (1.70), DUAL DIMS, 3X 1/4-20. MOVED: 3X (Ø.265) TO ISO VIEW. UPDATED: NOTE 6.
													29	39544	TPL 2016-10-10	IN BOM: ITEM 1 (BASE LATCH) WAS 0500200-02; ADDED VIEW TO SHOW MARKING OF ADD'L RIVETS.



- LIBERALLY APPLY ALPHA 2000 GREASE TO ENTIRE DIA. OF RIVET (ITEM 8)
- LIBERALLY APPLY ALPHA 2000 GREASE TO OVER CENTER SPRING (ITEM 9)



NOTES: UNLESS OTHERWISE SPECIFIED;

- 1 IDENTIFY ASSEMBLY WITH PART NUMBER AND DATE CODE APPROXIMATELY AS SHOWN, OR IN OTHER APPROVED LOCATIONS AS OUTLINED IN ES-121. ORIENTATION OF THE RIVET CONTAINING PART MARKING NOT IMPORTANT.
- 2 ORIENTATION OF SPRING (ITEM 10) NOT CRITICAL.
- 3 AFTER STAKING, LOCK ARM (ITEM 6) SHOULD ROTATE FREELY WITH NO NOTICEABLE RESISTANCE.
- 4 OPPOSITE HAND ITEM IS 11342-16.
- 5 USE WITH TRIMARK'S Ø.500 STRIKER BOLT.
- 6 TIGHTEN GRADE 5 OR BETTER MOUNTING FASTENERS TO THE FASTENER MANUFACTURER'S RECOMMENDED TORQUE VALUE; HOWEVER, DO NOT EXCEED 120 IN-LB [13.6 Nm].
- 7 FOR PROPER FUNCTION OF ASSEMBLY, A SPACER 0.099-0.111 IN [2.51-2.82 MM] THICK IS REQUIRED BETWEEN THE LATCH AND LOGIC MECHANISM.
- 8 DIMENSIONS IN [] ARE MILLIMETERS, FOR REFERENCE ONLY.

<p>INDICATES REQUIRED ASSEMBLY INFORMATION.</p> <p>UOS: THE -00 VERSION SHALL BE THE UNFINISHED VERSION OF PART SHOWN.</p> <p>UOS: ALL DIMENSIONS APPLY BEFORE COATING. (ASME Y14.5M, sec. 2.4.1)</p>		<p>TriMark</p> <p>500 Bailey Avenue P. O. Box 350 New Hampton, Iowa 50659 U.S.A. Tel: 641-394-3188 Fax: 641-394-2392</p>	
<p>TOLERANCES UNLESS OTHERWISE SPECIFIED (UOS)</p> <p>ASME Y14.5M-1994</p> <p>INCH MILLIMETER</p> <p>X.X ±.1 X ±.3</p> <p>X.XX ±.03 X.X ±.8</p> <p>X.XXX ±.010 X.XX ±.25</p> <p>ANGLES</p> <p>X° ±.3°</p> <p>X.X° ±.1.0°</p> <p>X.XX° ±.50°</p>		<p>DRAWN BY JGP 1990-07-23</p> <p>CHECKED BY SAB 1990-07-27</p>	<p>PROJECT -</p> <p>PRODUCT CODE E23 (050-0250)</p>
<p>DO NOT SCALE DRAWING</p>		<p>CUSTOMER -</p> <p>CUSTOMER PART NUMBER -</p>	<p>DESCRIPTION</p> <p>050-0250, LH, 2POSN, .265, LTCH/LINK</p>
<p>REF. T/M OP 4.20-2 FOR SUP. QUALITY REQ.</p> <p>REF. T/M OP 4.20-3 FOR INT. QUALITY REQ.</p>	<p>PART WEIGHT (0.98 LB)</p>	<p>SURFACE AREA -</p>	<p>SIZE C SCALE 1.0 PART NUMBER 11344</p>