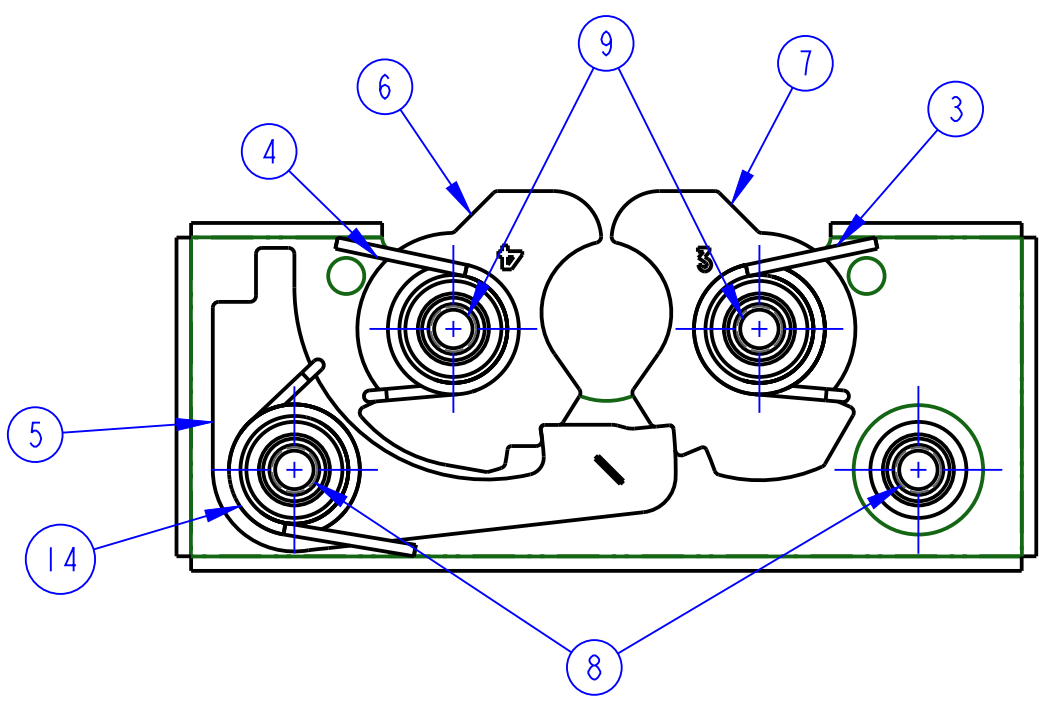
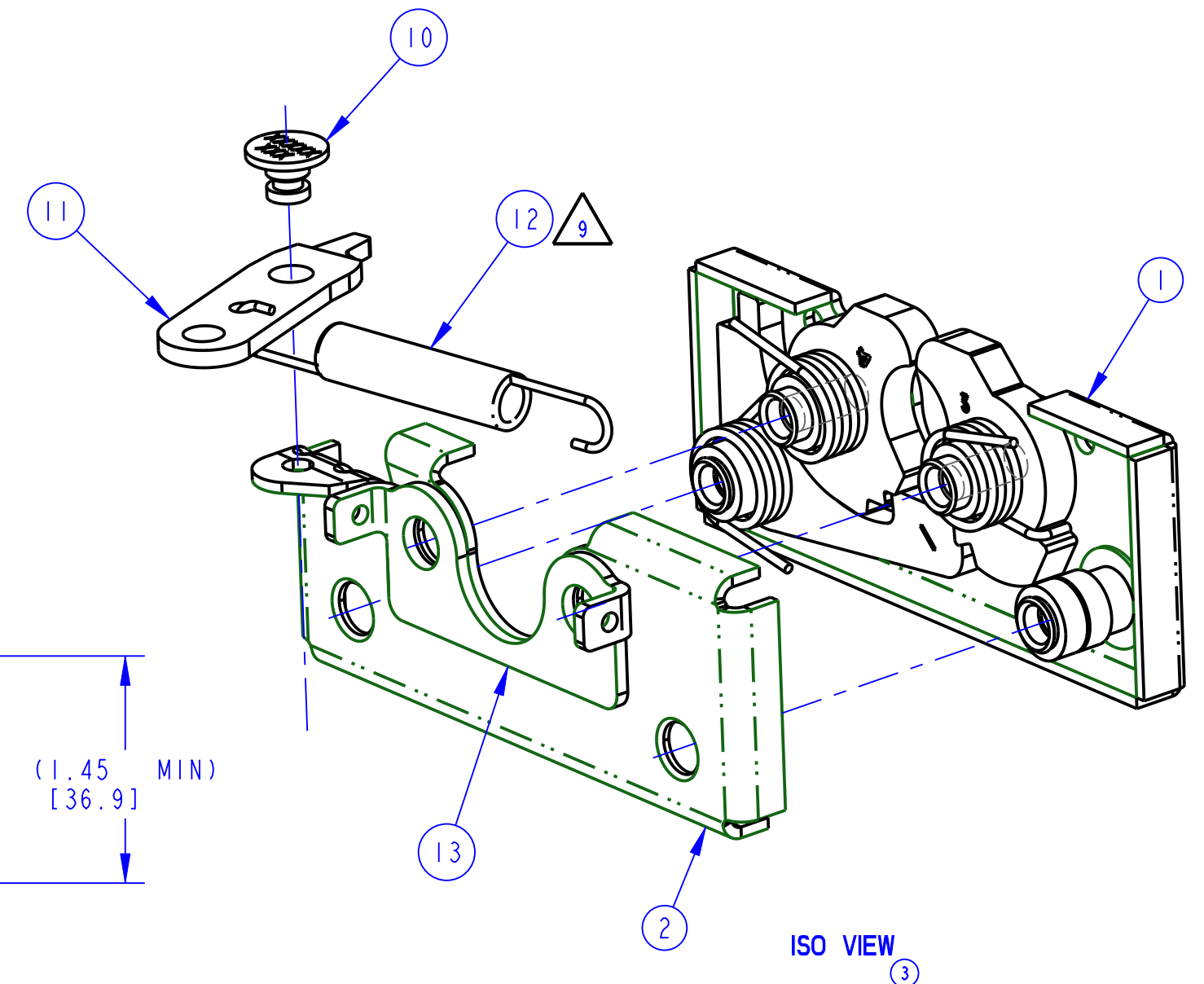
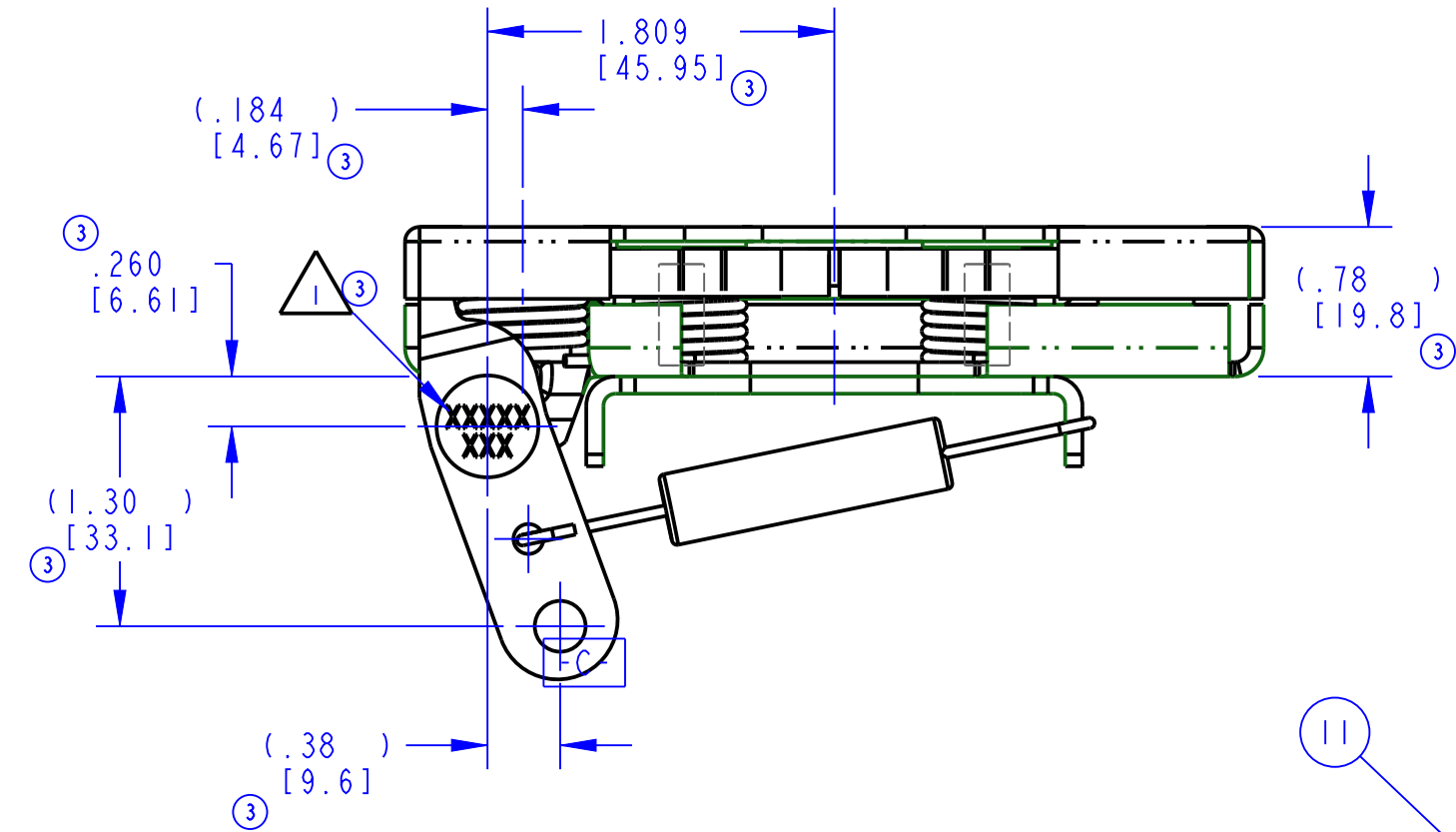


PART NUMBER DESCRIPTION	ITEM 1 PLATE (QTY)	ITEM 2 PLATE (QTY)	ITEM 3 SPRING (QTY)	ITEM 4 SPRING (QTY)	ITEM 5 CATCH (QTY)	ITEM 6 ROTOR (QTY)	ITEM 7 ROTOR (QTY)	ITEM 8 AXLE (QTY)	ITEM 9 AXLE (QTY)	ITEM 10 RIVET (QTY)	ITEM 11 LEVER (QTY)	ITEM 12 SPRING (QTY)	ITEM 13 BRACKET (QTY)	ITEM 14 SPRING (QTY)	③ PART MARKING
19355-01 050-0100, LH, 2 POSN, M6X1, STRT, RTN	11439-16 (1)	11388-16 (1)	80854-00 (1)	80853-00 (1)	80631-26 (1)	81051-26 (1)	81052-26 (1)	81060-16 (2)	81353-16 (2)	80635-16 (1)	11278-16 (1)	80926-57 (1)	81352-16 (1)	19427-01 (1)	19355

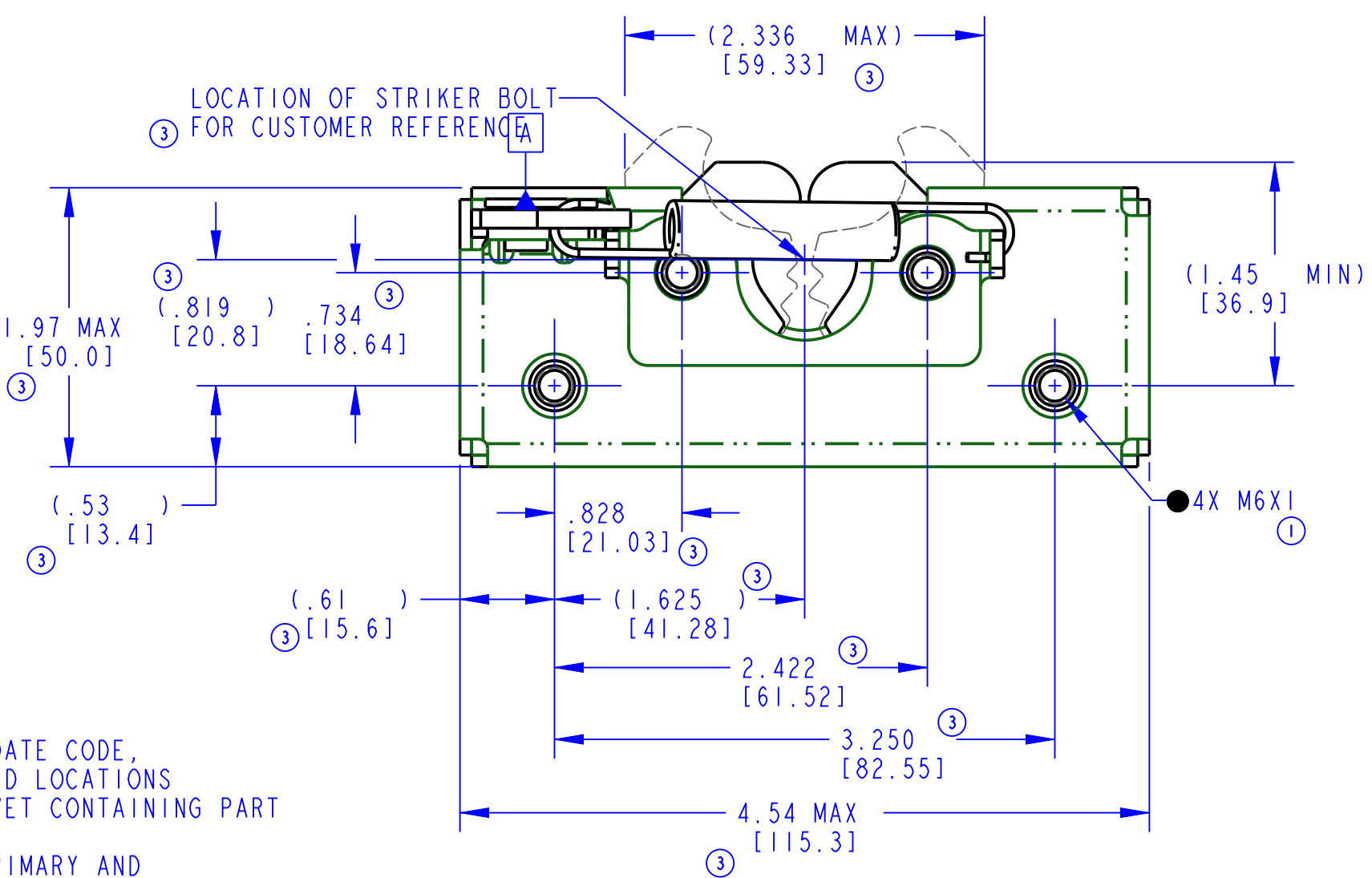
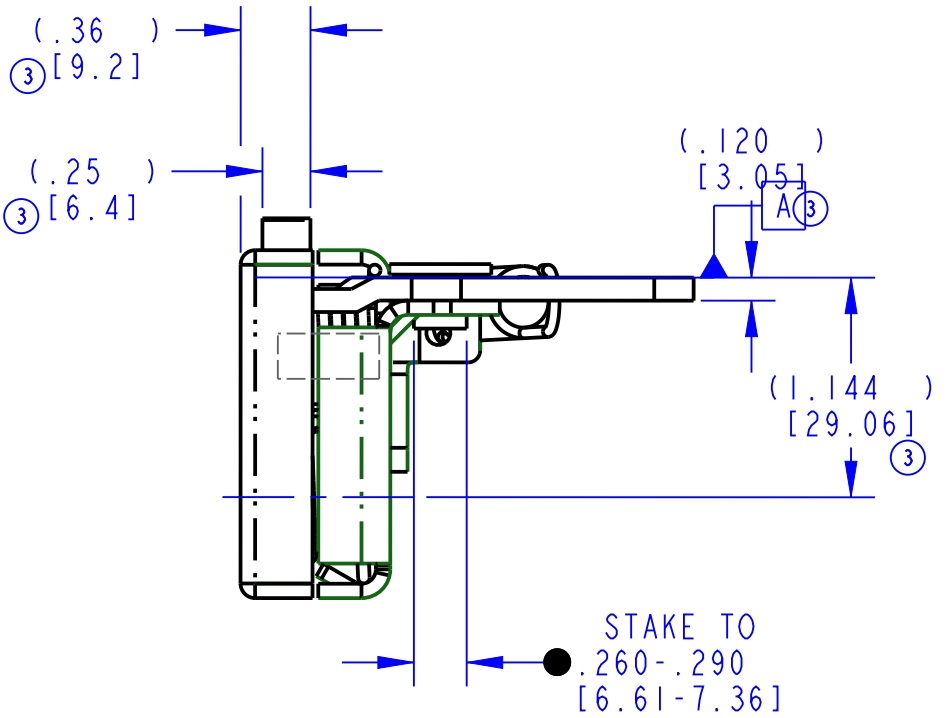
REVISION	ECN	ECN BY	DESCRIPTION
0	RLSE	JRS 7/22/02	RELEASED FOR PRODUCTION
1	20193	BAR 8/16/05	ADDED 19427-01, NOTE 6-8; 4X M6X1 WAS 4X M6X1-6H, 80853-00 (QTY 1) WAS (QTY 2); REVISED BOM
2	20627	MAD 11/22/05	ADDED NOTE 9; REORIENTED SPRING
3	38267	AGJ 06/07/13	UPDATE: DESC, CR/PR DIMS, PART MARKING. ADDED: ISO VIEW.



INTERNAL COMPONENTS VIEW



ISO VIEW



NOTES: UNLESS OTHERWISE SPECIFIED;

- ① IDENTIFY ASSEMBLIES WITH PART NUMBER AND DATE CODE, APPROXIMATELY AS SHOWN OR IN OTHER APPROVED LOCATIONS AS OUTLINED IN ES-121. ORIENTATION OF RIVET CONTAINING PART NUMBER AND DATE CODE NOT IMPORTANT.
- ② ROTORS TO FULLY ENGAGE THE CATCH IN THE PRIMARY AND SECONDARY POSITIONS WHEN CLOSED WITH A  $\phi$ .678 [17.22] GAGE PIN.
- ③ AXLES TO WITHSTAND A MINIMUM OF 120 IN-LBS OF TORQUE.
- ④ USE WITH TRIMARK'S  $\phi$ .675 [17.15] STRIKER BOLT.
- ⑤ DIMENSIONS IN [ ] ARE MILLIMETERS FOR REFERENCE ONLY.
- ⑥ TIGHTEN CLASS 8.8 OR BETTER MOUNTING FASTENERS TO THE FASTENER MANUFACTURER'S RECOMMENDED TORQUE VALUE; HOWEVER, DO NOT EXCEED 120 IN-LB [13.6 Nm].
- ⑦ WHEN MOUNTING LATCH, MOUNTING HOLE SIZE NOT TO EXCEED  $\phi$ .312 [7.92].
- ⑧ ASSEMBLY COMPLIES WITH STRENGTH REQUIREMENTS OF SAE STANDARD J839.
- ⑨ ORIENTATION OF SPRING (ITEM 12) IS IMPORTANT.

<p>● INDICATES REQUIRED ASSEMBLY INFORMATION.          UOS: THE -00 VERSION SHALL BE THE UNFINISHED VERSION OF PART SHOWN.          UOS: ALL DIMENSIONS APPLY BEFORE COATING. (ASME Y14.5M, sec. 2.4.1)</p>		<p><b>TriMark</b>          500 Bailey Avenue          P. O. Box 350          New Hampton, Iowa 50659 U.S.A.          Tel: 641-394-3188          Fax: 641-394-2392</p>	
<p>TOLERANCES UNLESS OTHERWISE SPECIFIED (UOS) ASME Y14.5M-1994</p>		<p>DRAWN BY JRS 07/22/02</p>	<p>CHECKED BY GCL 07/22/02</p>
<p>PROJECT XUK040</p>		<p>PRODUCT CODE E01 (050-0100)</p>	
<p>CUSTOMER</p>		<p>CUSTOMER PART NUMBER</p>	
<p>REF. T/M OP 4.20-2 FOR SUP. QUALITY REQ.          REF. T/M OP 4.20-3 FOR INT. QUALITY REQ.</p>		<p>PART WEIGHT (0.86 LB)</p>	<p>SURFACE AREA</p>
<p>DO NOT SCALE DRAWING</p>		<p>SIZE C</p>	<p>SCALE 1.0</p>
<p>DESCRIPTION</p>		<p>SEE BOM</p>	
<p>PART NUMBER</p>		<p>PART NUMBER 19355</p>	