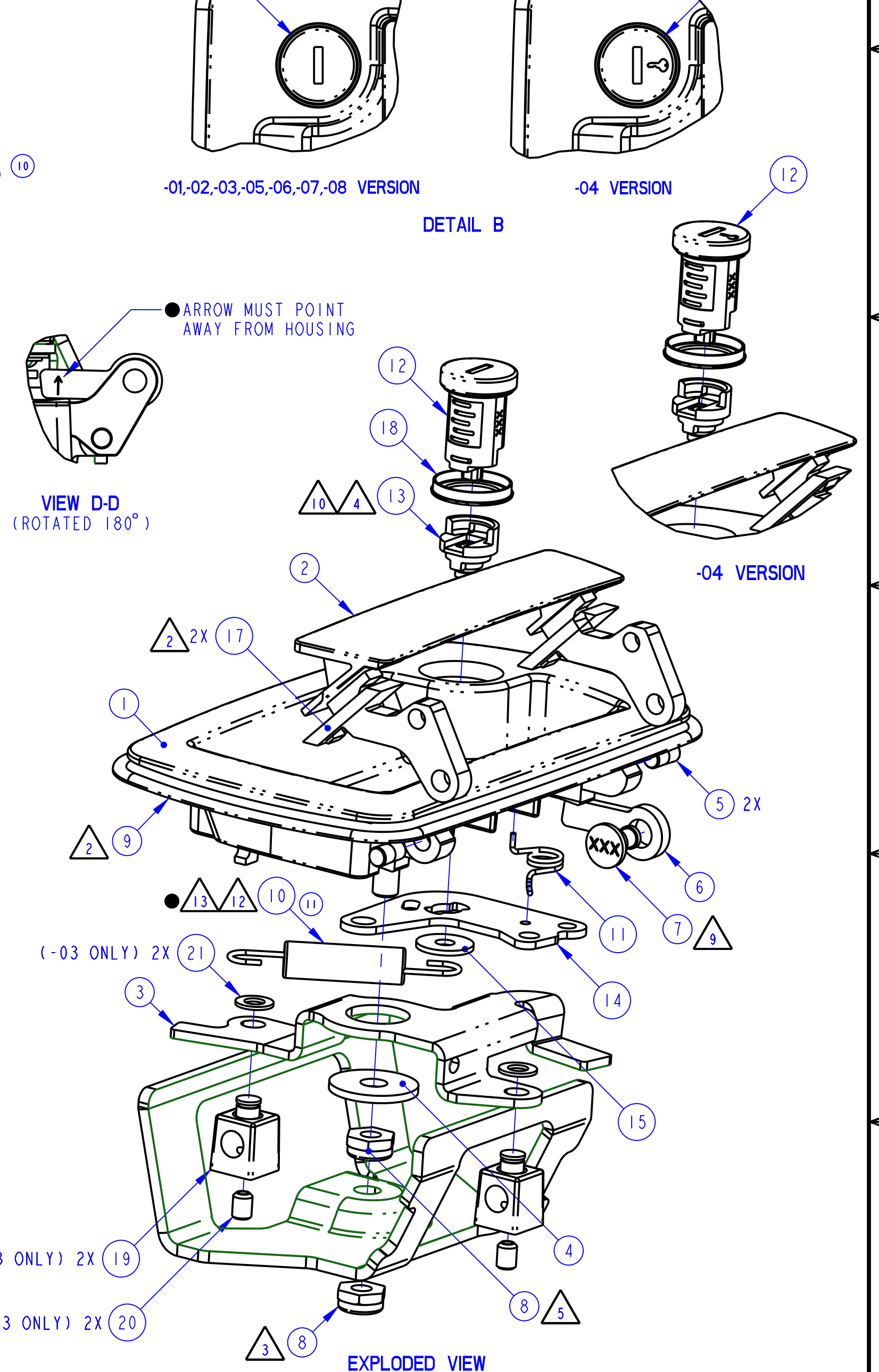
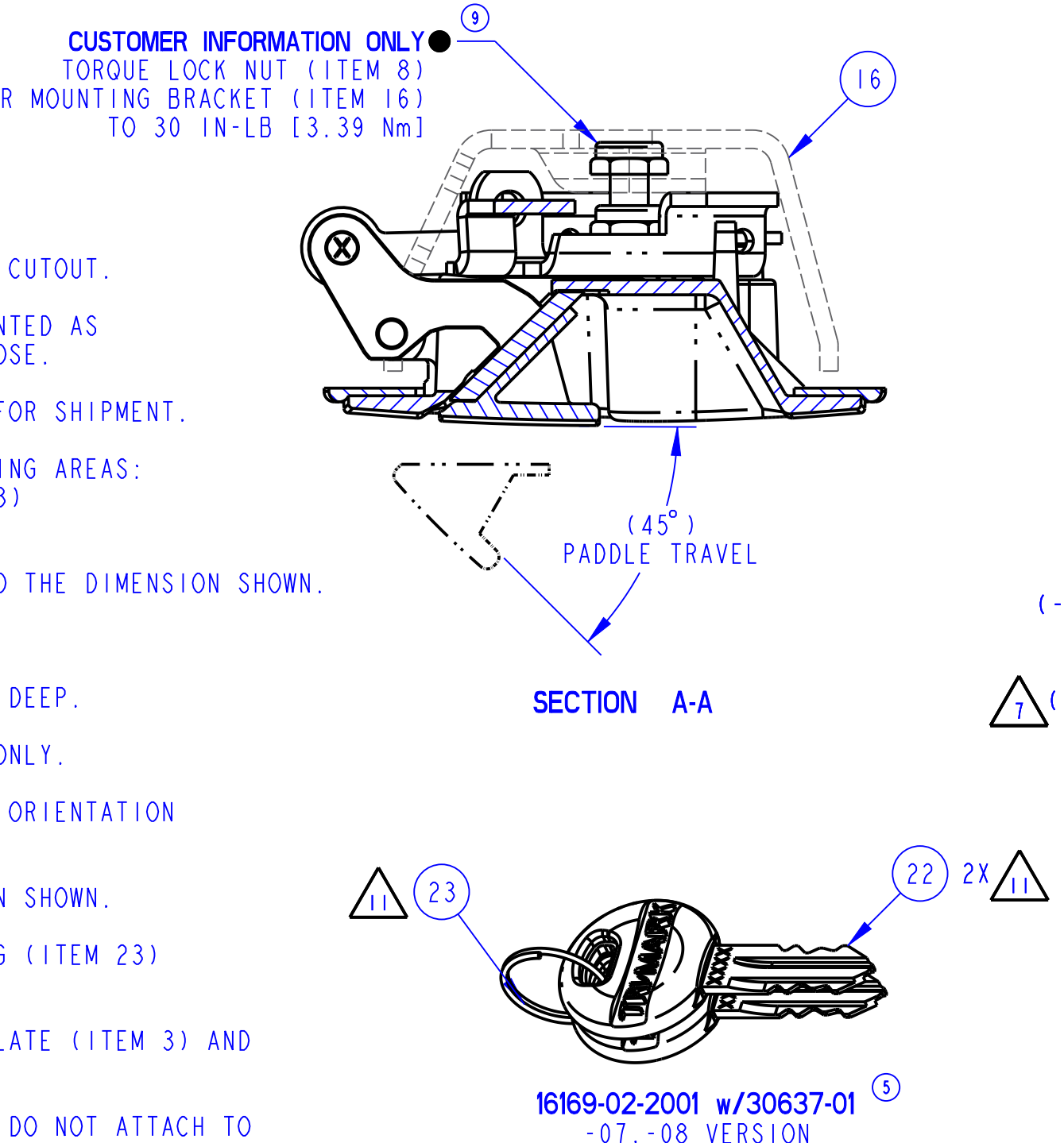
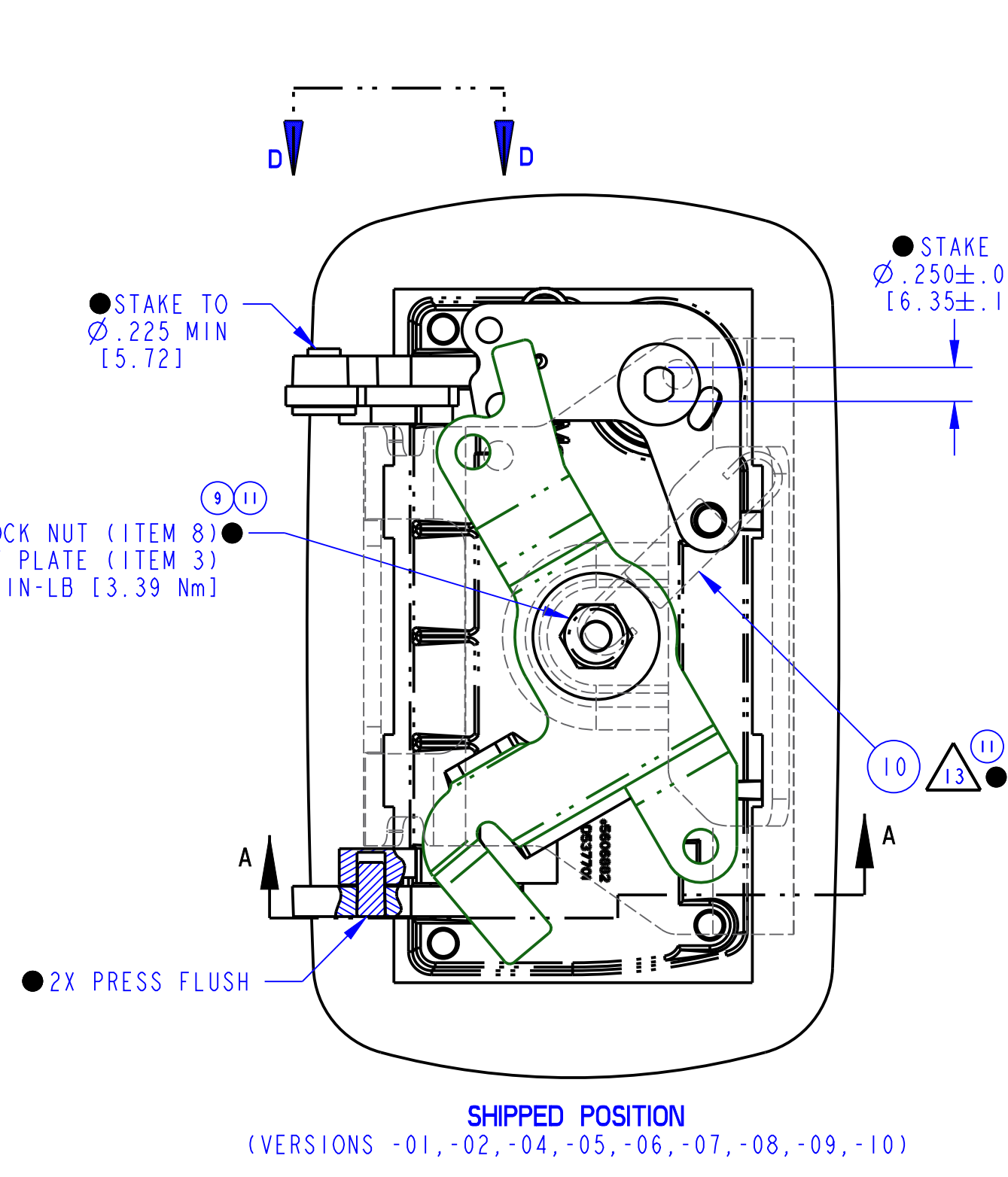
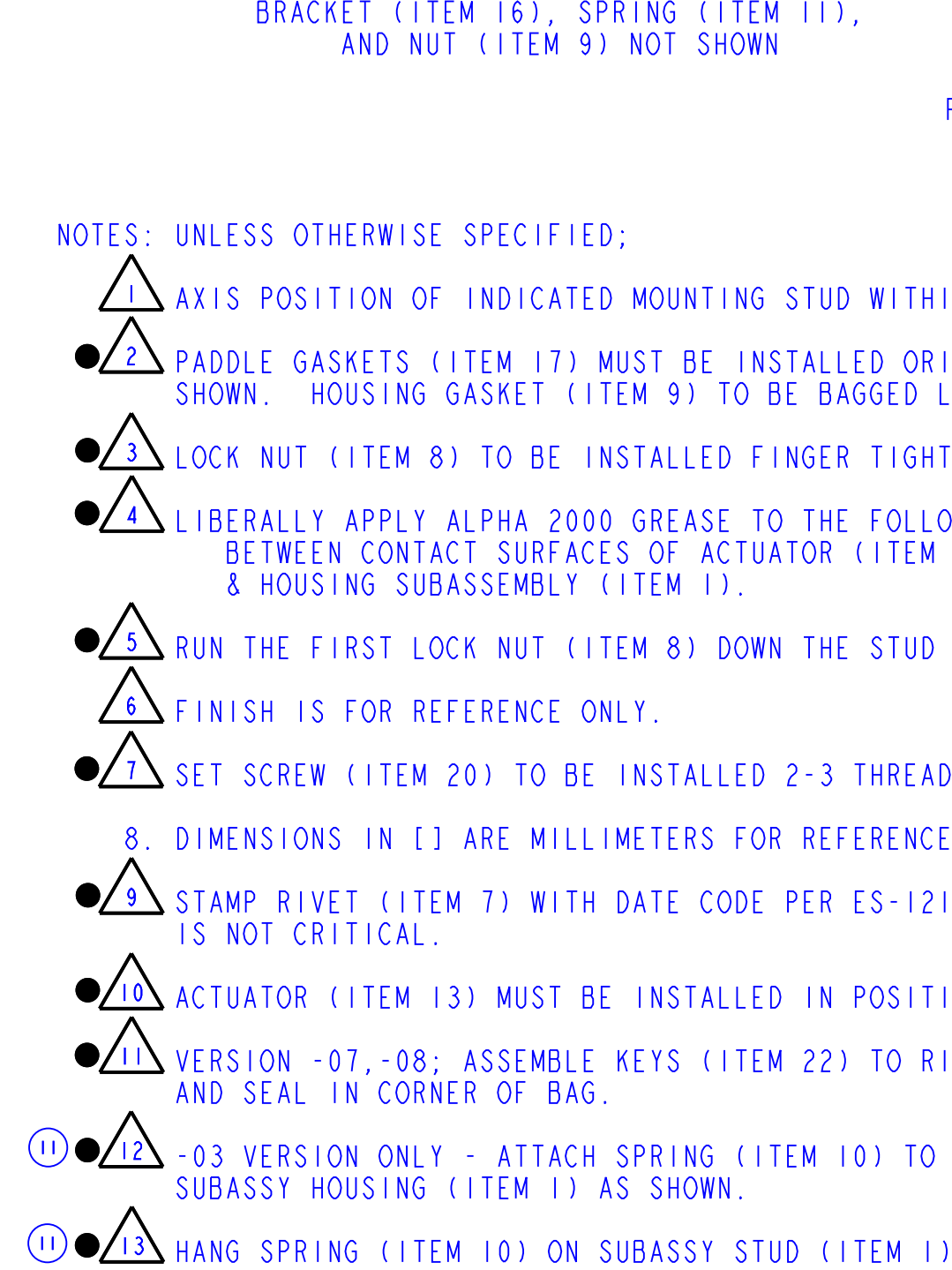
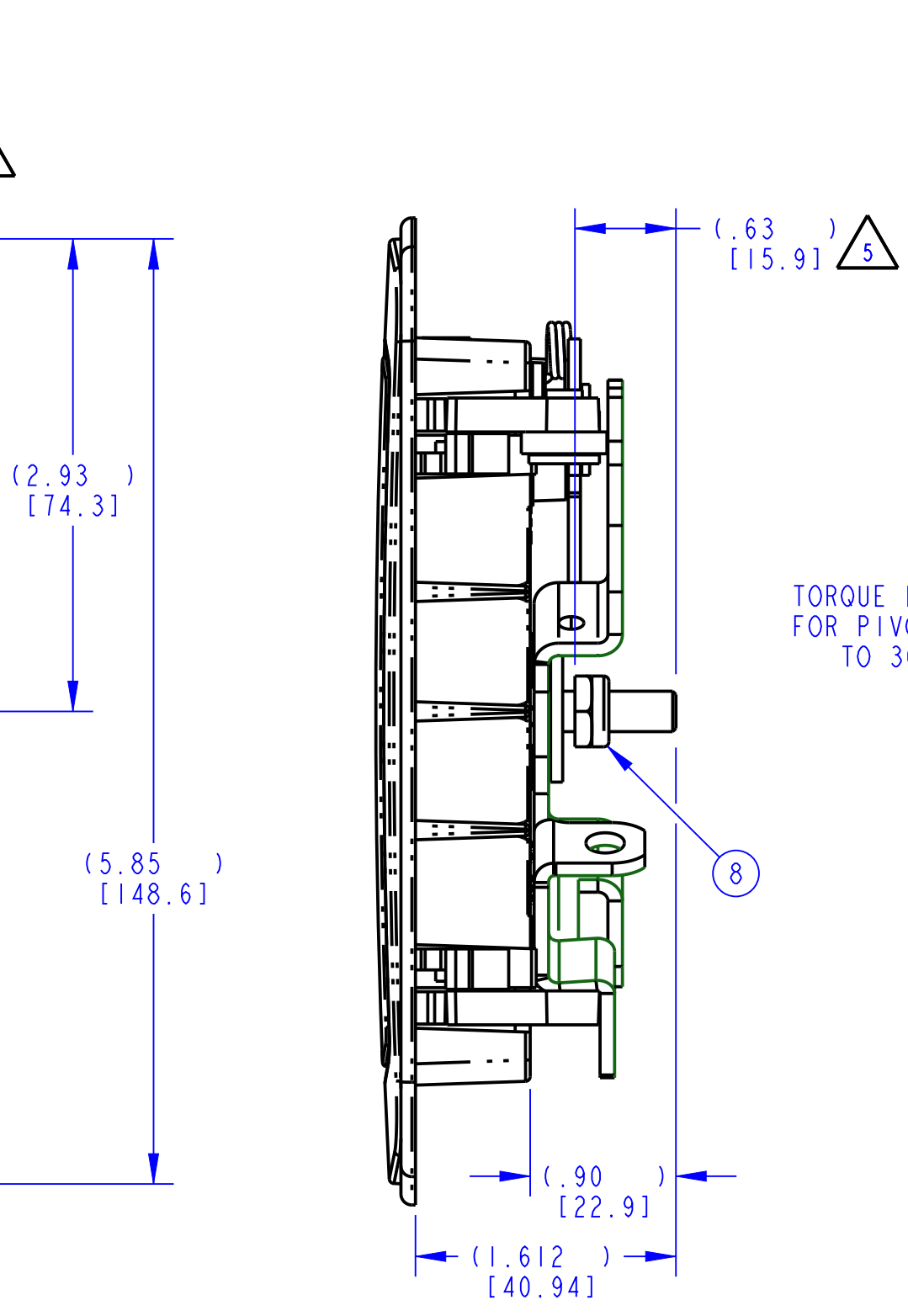
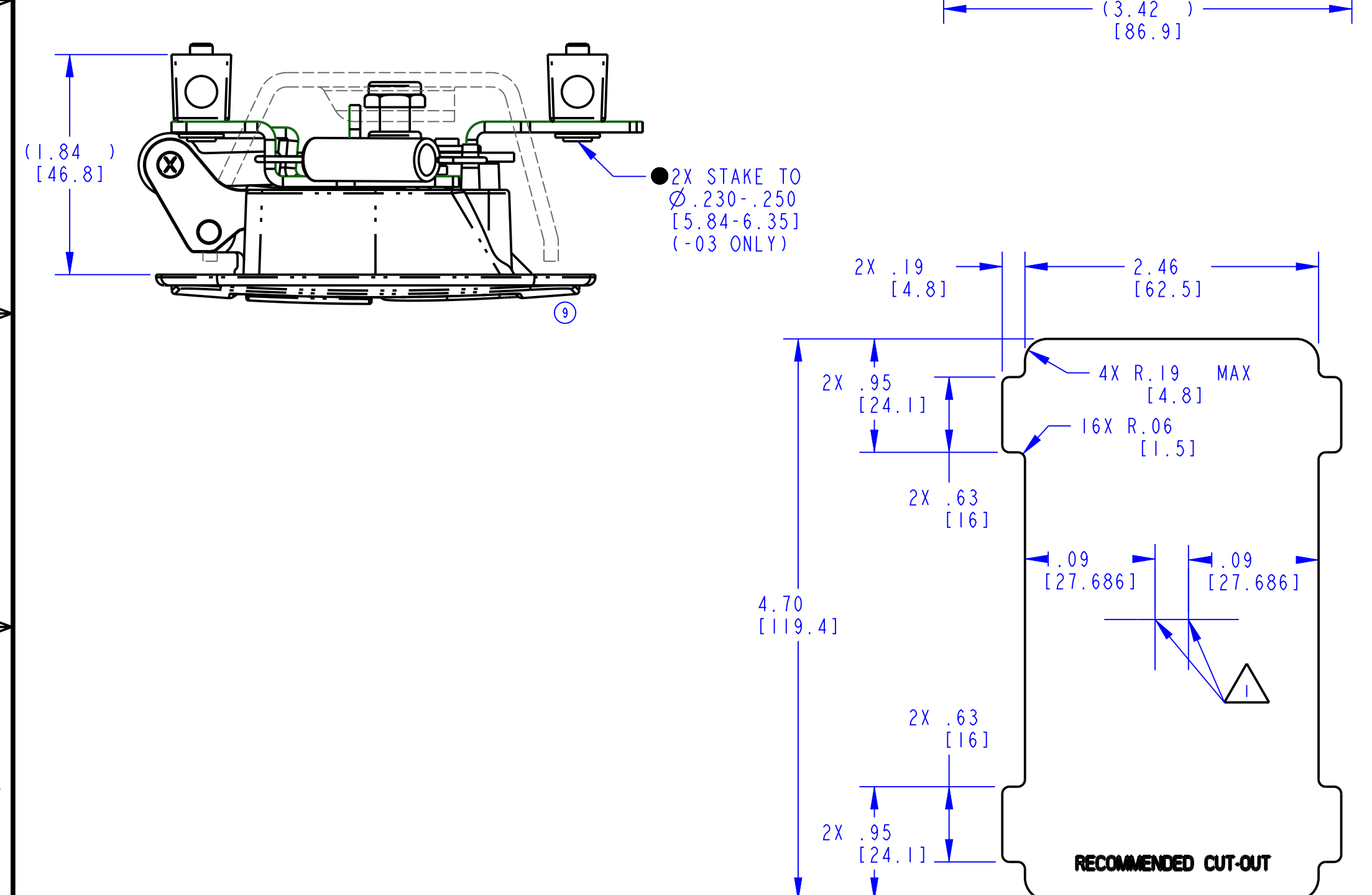
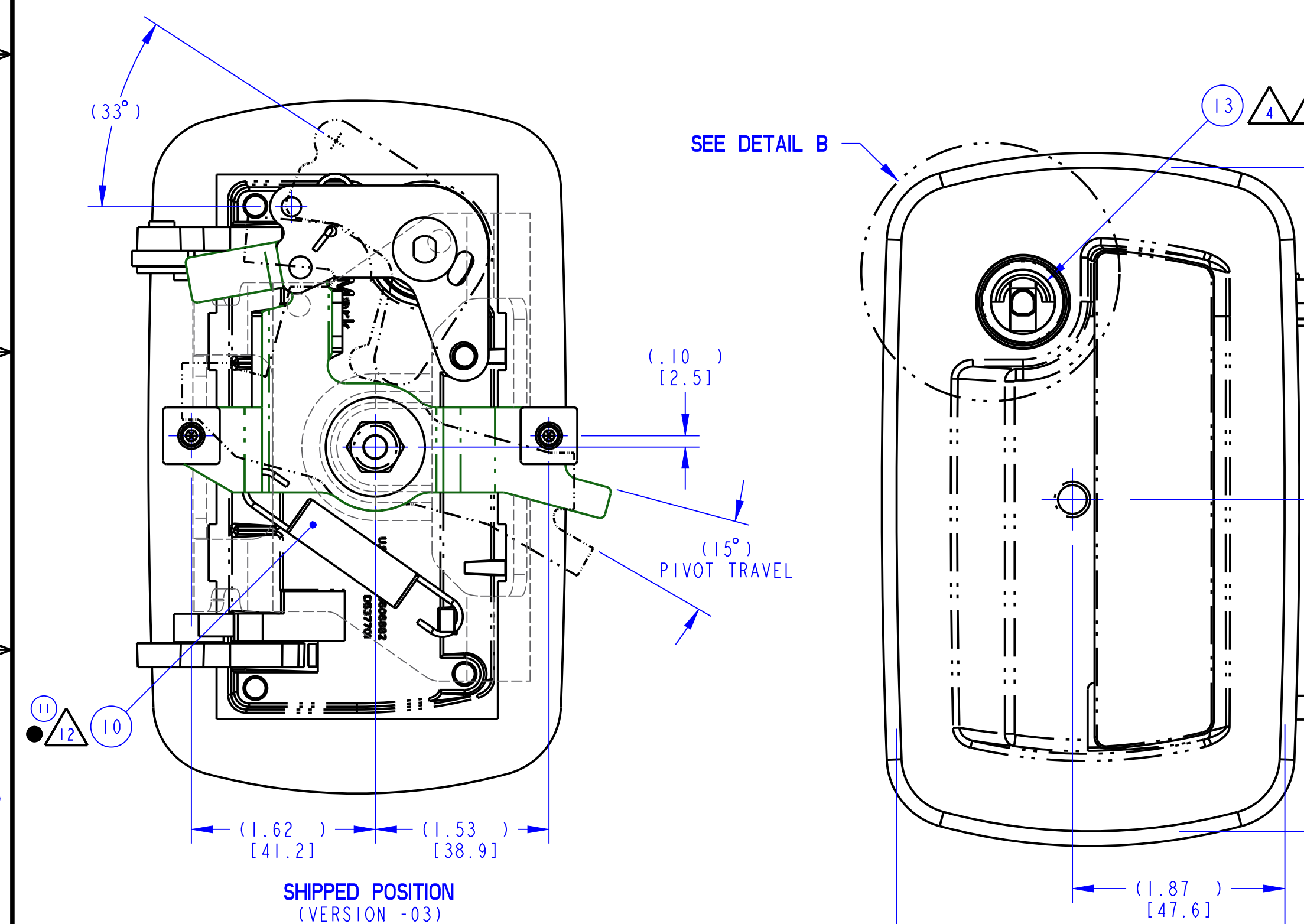


PART NUMBER	DESCRIPTION	ITEM 1 SUBASSY (QTY)	ITEM 2 PADDLE (QTY)	ITEM 3 PLATE (QTY)	ITEM 4 WASHER (QTY)	ITEM 5 PIN (QTY)	ITEM 6 ARM (QTY)	ITEM 7 RIVET (QTY)	ITEM 8 NUT (QTY)	ITEM 9 GASKET (QTY)	ITEM 10 SPRING (QTY)	ITEM 11 SPRING (QTY)	ITEM 12 LK CYL (QTY)	ITEM 13 ACTUATOR (QTY)	ITEM 14 LK CAM (QTY)	ITEM 15 WASHER (QTY)	ITEM 16 BRACKET (QTY)	ITEM 17 GASKET (QTY)	ITEM 18 SEAL (QTY)	ITEM 19 COLLAR (QTY)	ITEM 20 SCREW (QTY)	ITEM 21 WASHER (QTY)	ITEM 22 KEY (QTY)	ITEM 23 RING (QTY)	FINISH	KEYS SUPPLIED YES/NO (QTY)	
22675-01	030-1450,CNNC,LH,2PT,SHTSTUD	20596-01 (1)	20498-01 (1)										31684-01 (1)												PLATE,COPPER-NICKEL-NICKEL-CHROME		
22675-02	030-1450,LGB,LH,2PT,SHTSTUD	20596-02 (1)	20498-02 (1)										16014-02-1022 (1)							N/A	N/A	N/A				PAINT,BLACK,LOW GLOSS	
22675-03	030-1450,CNNC,LH,2PT,SHTSTUD,2CLR	20596-01 (1)	20498-01 (1)										16014-02-2001 (1)							12436-09 (2)	81574-18 (2)	13152-01 (2)				PLATE,COPPER-NICKEL-NICKEL-CHROME	NO
22675-04	030-1450,LGB,LH,2PT,SHTSTUD		20498-02 (1)										16014-92-9002 (1)													PAINT,BLACK,LOW GLOSS	
22675-05	030-1450,LGB,LH,2PT,SHTSTUD			14483-02 (1)	80999-16 (1)	80913-15 (2)	11712-01 (1)	81293-16 (1)	81002-15 (2)	20420-00 (1)	81287-57 (1)	80719-57 (1)	31684-01 (1)	16022-01 (1)	17293-01 (1)	81773-15 (1)	81318-16 (1)	20420-01 (2)	16025-01 (1)							HSG: PAINT,BLACK,LOW GLOSS PDL: PLATE,COPPER-NICKEL-NICKEL-CHROME	
22675-06	030-1450,LGB/CNNC,LH,2PT,SHTSTUD	20596-01 (1)	20498-01 (1)										16014-02-2001 (1)							N/A	N/A	N/A				PAINT,BLACK,LOW GLOSS	YES (2)
22675-07	030-1450,LGB,LH,2PT,SHTSTUD		20498-02 (1)																							HSG: PAINT,BLACK,LOW GLOSS PDL: PLATE,COPPER-NICKEL-NICKEL-CHROME	
22675-08	030-1450,LGB/CNNC,LH,2PT,SHTSTUD																									HSG: PAINT,BLACK,LOW GLOSS PDL: PLATE,COPPER-NICKEL-NICKEL-CHROME	NO
22675-09	030-1450,CNNC,LH,2PT,SHTSTUD	20596-01 (1)	20498-01 (1)																							HSG: PAINT,BLACK,LOW GLOSS PDL: PLATE,COPPER-NICKEL-NICKEL-CHROME	
22675-10	030-1450,LGB/CNNC,LH,2PT,SHTSTUD	20596-02 (1)																								HSG: PAINT,BLACK,LOW GLOSS PDL: PLATE,COPPER-NICKEL-NICKEL-CHROME	

REVISION	ECN	ECN BY	DESCRIPTION
7	37787	RLO 3-12-12	-07 (ITEM 12);31684-01 WAS 16014-02-2001.
8	37882	RLO 5-22-12	-01 (ITEM 12);31684-01 WAS 16014-02-2001.
9	38119	RLO 3-24-13	ITEM 18 (-09,-10 VERSION); N/A WAS 16025-01.REMOVED "CUSTOMER FINAL ASSEMBLY" VIEW TITLE.MOVED TORQUE CALLOUTS TO OTHER VIEWS. REMOVED SKETCHED LINE DIVIDING VIEWS.
10	38141	RLO 3-6-13	STAKED DIM;Ø.250±.006 WAS Ø.235±.005.
11	38522	RLO 5-21-14	SHIPPED POSITION;[3.39 Nm] WAS 18.47;ADDED NOTES 12 & 13;FLAGNOTES TO BODY OF DRAWING.



- NOTES: UNLESS OTHERWISE SPECIFIED;
- 1. AXIS POSITION OF INDICATED MOUNTING STUD WITHIN CUTOUT.
 - 2. PADDLE GASKETS (ITEM 17) MUST BE INSTALLED ORIENTED AS SHOWN. HOUSING GASKET (ITEM 9) TO BE BAGGED LOOSE.
 - 3. LOCK NUT (ITEM 8) TO BE INSTALLED FINGER TIGHT FOR SHIPMENT.
 - 4. LIBERALLY APPLY ALPHA 2000 GREASE TO THE FOLLOWING AREAS: BETWEEN CONTACT SURFACES OF ACTUATOR (ITEM 13) & HOUSING SUBASSEMBLY (ITEM 1).
 - 5. RUN THE FIRST LOCK NUT (ITEM 8) DOWN THE STUD TO THE DIMENSION SHOWN.
 - 6. FINISH IS FOR REFERENCE ONLY.
 - 7. SET SCREW (ITEM 20) TO BE INSTALLED 2-3 THREADS DEEP.
 - 8. DIMENSIONS IN [] ARE MILLIMETERS FOR REFERENCE ONLY.
 - 9. STAMP RIVET (ITEM 7) WITH DATE CODE PER ES-121. ORIENTATION IS NOT CRITICAL.
 - 10. ACTUATOR (ITEM 13) MUST BE INSTALLED IN POSITION SHOWN.
 - 11. VERSION -07,-08; ASSEMBLE KEYS (ITEM 22) TO RING (ITEM 23) AND SEAL IN CORNER OF BAG.
 - 12. -03 VERSION ONLY - ATTACH SPRING (ITEM 10) TO PLATE (ITEM 3) AND SUBASSY HOUSING (ITEM 1) AS SHOWN.
 - 13. HANG SPRING (ITEM 10) ON SUBASSY STUD (ITEM 1). DO NOT ATTACH TO PLATE (ITEM 3).

TOLERANCES UNLESS OTHERWISE SPECIFIED (UNSI)		DRAWN BY		GDE 08/21/06	
ASME Y14.5M-1994		CHECKED BY		CRZ 01/22/07	
INCH MILLIMETER		PROJECT		03087	
X.X ±.1		PRODUCT CODE		C33 (030-1450)	
X.XX ±.03		CUSTOMER			
X.XXX ±.010		CUSTOMER PART NUMBER			
ANGLES		PART WEIGHT		(1.7 LB)	
X° ±.3°		SURFACE AREA			
X.X° ±1.0°		SIZE		D	
X.XX° ±.50°		SCALE		1.0	
DO NOT SCALE DRAWING		DESCRIPTION		SEE BOM	
REF. T/M OP 4.20-2 FOR SUP. QUALITY REQ.		PART NUMBER		22675	
REF. T/M OP 4.20-3 FOR INT. QUALITY REQ.					

TriMark
500 Bailey Avenue
P. O. Box 350
New Hampton, Iowa 50659 U.S.A.
Tel: 641-394-3188
Fax: 641-394-2392

This drawing and the information contained herein is the property of TriMark Corporation and shall not be used for any purpose without our written consent.