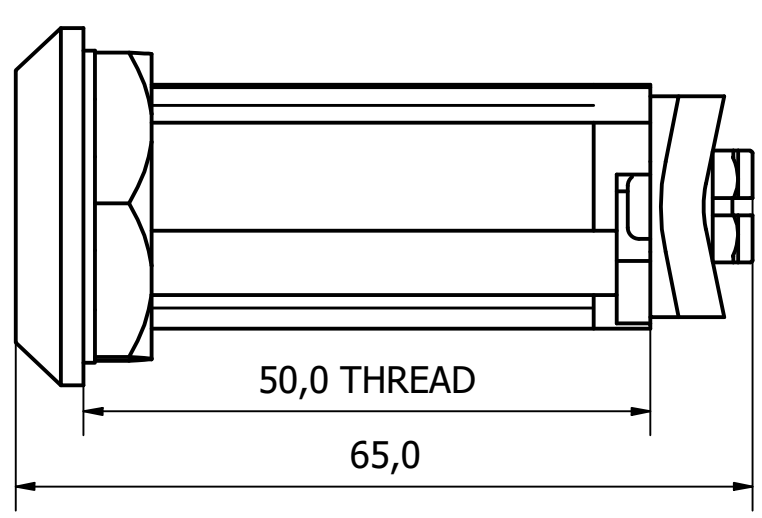
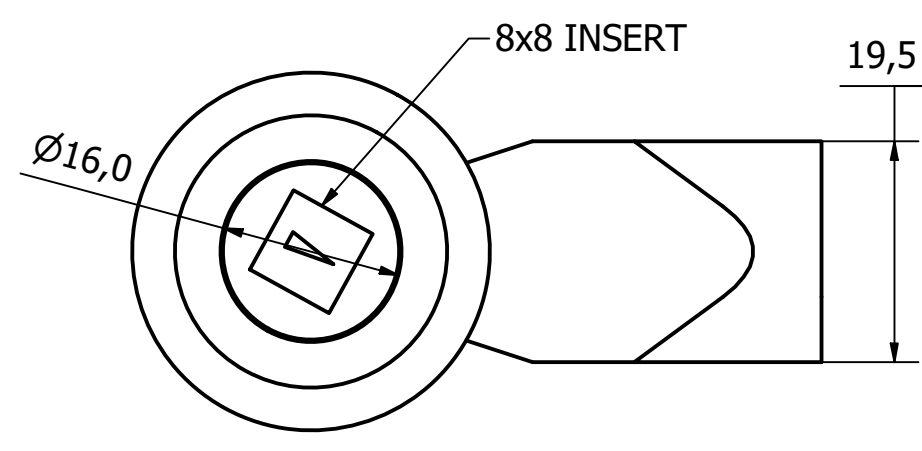


PARTS LIST			
ITEM	QTY	PART NUMBER	DESCRIPTION
1	1	5000-850-1	ZINC DIE-CAST HOUSING - CHROME PLATED
2	1	5000-850-2	ZINC DIE-CAST SQUARE - CHROME PLATED
3	1	5000-850-3	RUBBER NBR GASKET
4	1	5000-850-4	M/STEEL CAM - ZINC PLATED
5	1	5000-850-5	ZINC DIE-CAST DOUBLE BIT - SELF-COLOUR
6	1	5000-850-6	ZINC DIE-CAST NUT - SELF-COLOUR
7	1	5000-850-7	M/STEEL M6 SCREW - ZINC PLATED
8	1	5000-850-8	RUBBER NBR O RING - BLACK
9	1	5000-850-9	RUBBER NBR O RING - BLACK
10	1	5000-850-10	STAINLESS STEEL 304 WASHER



2	PARTS LIST CHANGED	12/07/19	A.P
REV	DESCRIPTION	DATE	APPROVED

GENERAL TOLERANCES ON LENGTHS  
 0.5 - 6 ± 0.1mm  
 6 - 30 ± 0.2mm  
 30 - 120 ± 0.3mm  
 120 - 400 ± 0.5mm  
 400 - 1000 ± 0.8mm  
 1000 - 2000 ± 1.2mm  
 2000 - 4000 ± 2.0mm

ALBERT JAGGER LTD  
 GREEN LANE  
 WALSALL PHONE: 01922 471000  
 WEST MIDLANDS FAX: 01922 648021  
 WS2 8HG  
 THIS DRAWING & THE DESIGN SHOWN ARE THE PROPERTY OF ALBERT JAGGER LTD AND MUST NOT BE USED OR COPIED BY A THIRD PARTY WITHOUT PERMISSION

DRAWN BY  
A.S

CHECKED BY  
A.P

THIRD ANGLE PROJECTION

SCALE  
1.5:1

MATERIAL  
SEE DRAWING

MASS  
0.181 kg

FINISH  
SEE DRAWING

Date  
27/06/2019

ALL DIMS IN MM UNLESS STATED DO NOT SCALE

A3



QUARTER TURN LOCK  
 5000-850  
 Edition 2  
 Sheet 1 / 1