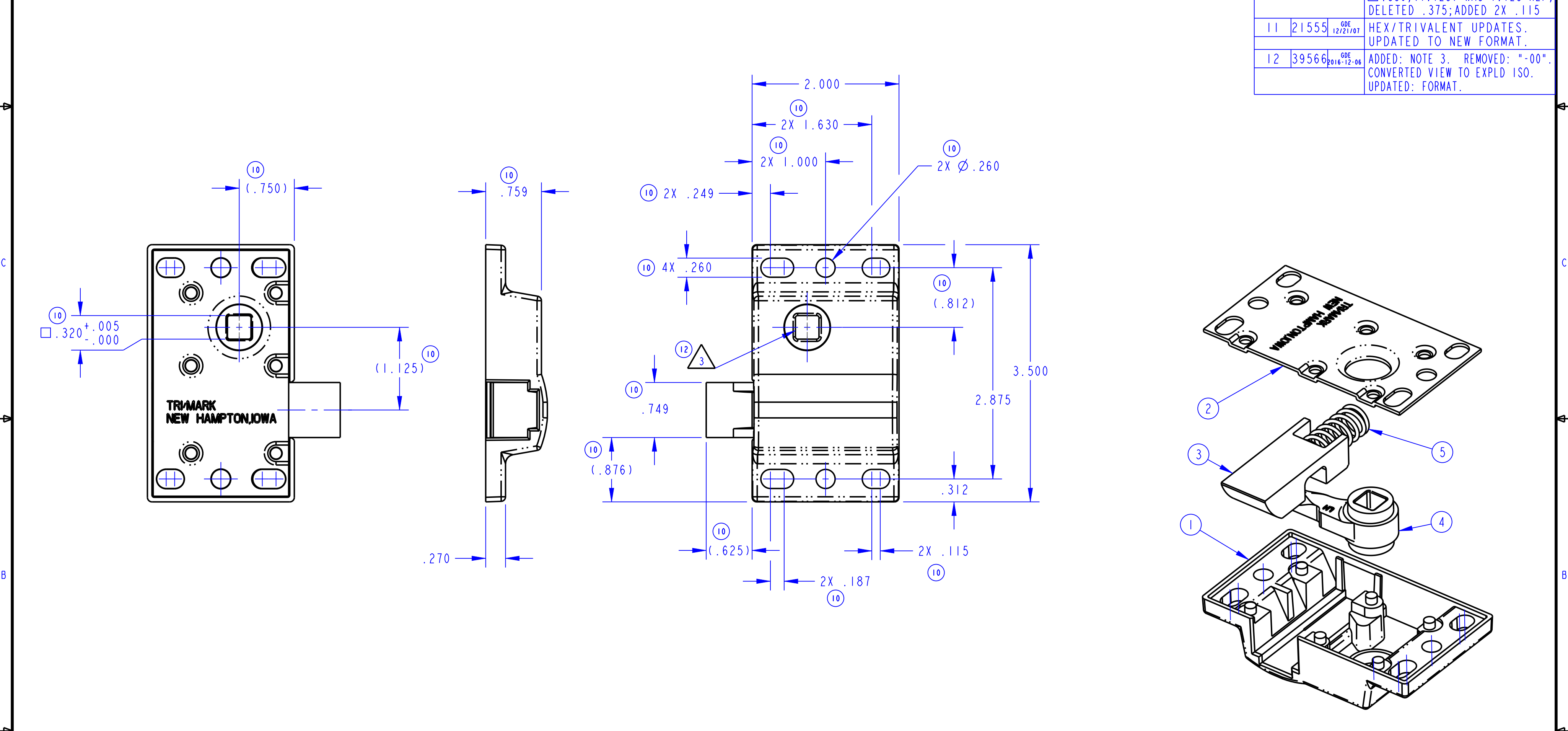


PART NUMBER DESCRIPTION	ITEM 1 HOUSING (QTY)	ITEM 2 PLATE (QTY)	ITEM 3 LCHBLT (QTY)	ITEM 4 CAM (QTY)	ITEM 5 SPRING (QTY)	FINISH 2 △	REVISION	ECN	ECN BY	DESCRIPTION
							10120 ASM,LCH,PLUNGER BOLT,LH,ODEG	10118-00 (1)		
10120-12 ASM,LCH,PLUNGER BOLT,LH,ODEG,MGB	10118-12 (1)	80557-15 (1)	80556-00 (1)	10119-00 (1)	80555-57 (1)	PAINT, BLACK, MEDIUM GLOSS PER ES-105	11	21555	GDE 12/21/07	HEX/TRIVALENT UPDATES. UPDATED TO NEW FORMAT.
10120-15 ASM,LCH,PLUNGER BOLT,LH,ODEG	10118-15 (1)					COAT PER ES-104	12	39566	GDE 2016-12-06	ADDED: NOTE 3. REMOVED: "-00". CONVERTED VIEW TO EXPLD ISO. UPDATED: FORMAT.



- NOTES:
- PLACE LUBRICANT BETWEEN ITEMS 1,2 AND 3.
 - △ FINISH IS FOR REFERENCE ONLY.
 - △ MAXIMUM MATERIAL CONDITION OF DRIVE BAR FOR MECHANISM NOT TO EXCEED $\square 0.312$.

DIMENSIONS	ANGLES
X.X = ±.1	X° = ± 3°
X.XX = ±.03	
X.XXX = ±.015	

● INDICATES REQUIRED ASSEMBLY INFORMATION. UOS: THE -00 VERSION SHALL BE THE UNFINISHED VERSION OF PART SHOWN. UOS: ALL DIMENSIONS APPLY BEFORE COATING. (ASME Y14.5M, sec. 2.4.1)		TriMark 500 Bailey Avenue P. O. Box 350 New Hampton, Iowa 50659 U.S.A. Tel: 641-394-3188 Fax: 641-394-2392	
TOLERANCES UNLESS OTHERWISE SPECIFIED (UOS) ASME Y14.5M-1994		DRAWN BY: JRW 1982-09-29	PROJECT: LT6S PRODUCT CODE: F01 (060-0100)
DO NOT SCALE DRAWING		CHECKED BY: - CUSTOMER: -	
REF. T/M OP 4.20-2 FOR SUP. QUALITY REQ. REF. T/M OP 4.20-3 FOR INT. QUALITY REQ.		PART WEIGHT: (0.62 LB) SURFACE AREA: -	DESCRIPTION: SEE BOM SIZE: C SCALE: 1.0 SHEET: 1/1 PART NUMBER: 10120