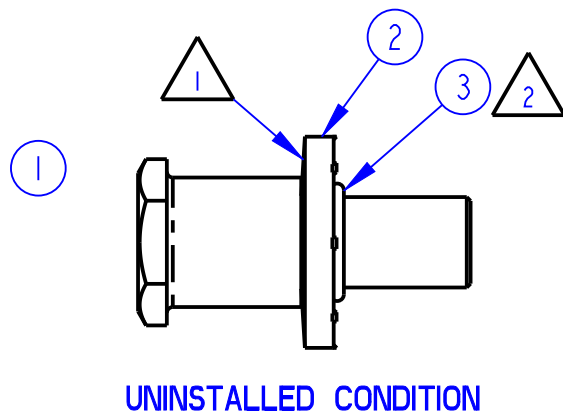
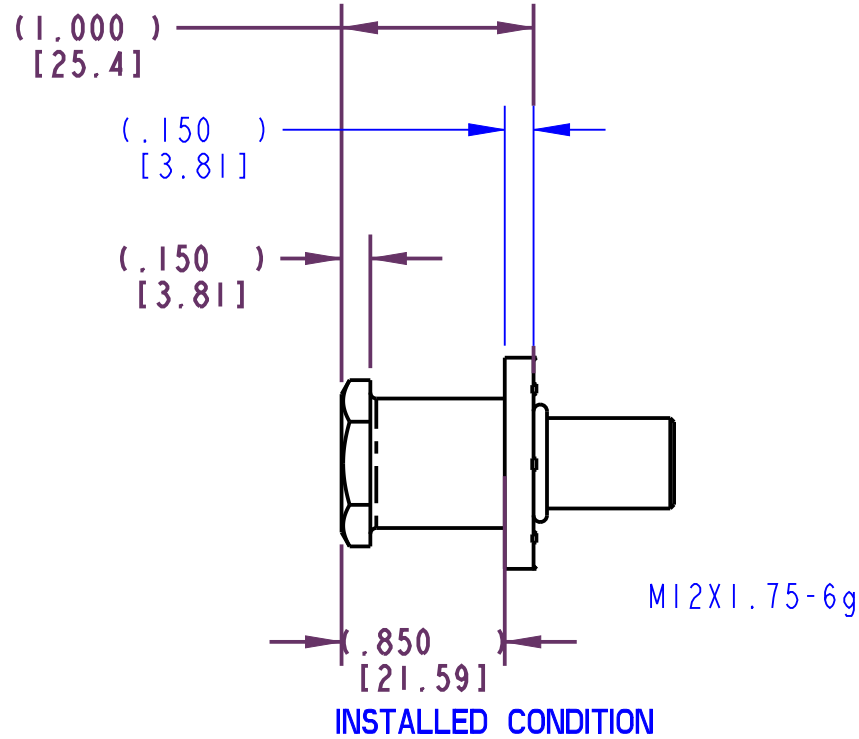
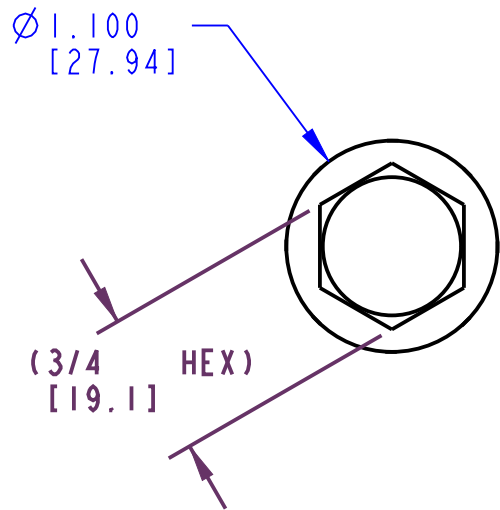


PART NUMBER	ITEM 1 BOLT (QTY)	ITEM 2 WASHER (QTY)	ITEM 3 O-RING (QTY)	PACKAGING
11111-16	80902-16 (1)	80869-16 (1)	19680-01 (1)	STANDARD PACKAGING 300 PCS/BOX
11111-16-BX				SPECIAL PACKAGING 50 PCS/BOX

REVISION	ECO	BY	CHECKED	DESCRIPTION
6	19707	MLH 9/23/03	GDE 9/23/03	REVISED TO NEW STANDARD



NOTES:

- 1 WASHER ORIENTATION IMPORTANT.
- 2 FUNCTION OF O-RING (LOCATED APPROXIMATELY AS SHOWN) IS TO RETAIN THE WASHER UNTIL THE STRIKER BOLT IS INSTALLED.
- 3 DIMENSION INDICATES BLANK SIZE PRIOR TO ROLLING THREADS.
- 4. PLATED THREADS TO BE INSPECTED WITH A M12X1.75-6h OR -4h GO RING GAUGE.
- 5. INSTALLATION TORQUE 75 FT-LBS MINIMUM DEPENDING UPON SURFACE CONDITION OF THREADS.
- 6. DIMENSIONS IN [] ARE MILLIMETERS FOR REFERENCE ONLY.

● INDICATES REQUIRED ASSEMBLY INFORMATION.

DRAWN BY	JRW	7/31/84	MATERIAL	<p>500 Bailey Avenue P. O. Box 350 New Hampton, Iowa 50659 U.S.A. Tel: 641-394-3188 Fax: 641-394-2392</p>															
CHECKED BY			HEAT TREAT																
DESIGN ENG.	BAB	1/9/85	FINISH																
PROD. MNGR.																			
<p>TOLERANCES UNLESS OTHERWISE SPECIFIED ASME Y14.5M-1994</p> <table border="0"> <tr> <td>INCH</td> <td>MILLIMETER</td> </tr> <tr> <td>X.X = ±.1</td> <td>X = ±3</td> </tr> <tr> <td>X.XX = ±.03</td> <td>X.X = ±.8</td> </tr> <tr> <td>X.XXX = ±.010</td> <td>X.XX = ±.25</td> </tr> </table> <p>ANGLES</p> <table border="0"> <tr> <td>X° = ±3°</td> </tr> <tr> <td>X.X° = ±1.0°</td> </tr> <tr> <td>X.XX° = ±.50°</td> </tr> </table>			INCH	MILLIMETER	X.X = ±.1	X = ±3	X.XX = ±.03	X.X = ±.8	X.XXX = ±.010	X.XX = ±.25	X° = ±3°	X.X° = ±1.0°	X.XX° = ±.50°	PROJECT	L83072-13	CUSTOMER		CUSTOMER PART NUMBER	
INCH	MILLIMETER																		
X.X = ±.1	X = ±3																		
X.XX = ±.03	X.X = ±.8																		
X.XXX = ±.010	X.XX = ±.25																		
X° = ±3°																			
X.X° = ±1.0°																			
X.XX° = ±.50°																			
SIZE	B	PART WEIGHT	(.17 LBS)	SURFACE AREA		PRODUCT CODE	G03 (070-0200)												
<p>REF. T/M OP 4.20-2 FOR SUP. QUALITY REQ. - REF. T/M OP 4.20-3 FOR INT. QUALITY REQ.</p>																			
<p>DESCRIPTION ASSY, BLT/WSHR, 1.000 SHLDR, M12X1.75</p>																			
SCALE	FULL	REVISION	6	TYPE		PART NUMBER	11111-XX												



500 Bailey Avenue
P. O. Box 350
New Hampton, Iowa 50659 U.S.A.
Tel: 641-394-3188
Fax: 641-394-2392

This drawing and the information contained herein is the property of TriMark Corporation and shall not be used for any purpose without our written consent.

DESCRIPTION
ASSY, BLT/WSHR, 1.000 SHLDR, M12X1.75

SCALE FULL REVISION 6 TYPE PART NUMBER 11111-XX