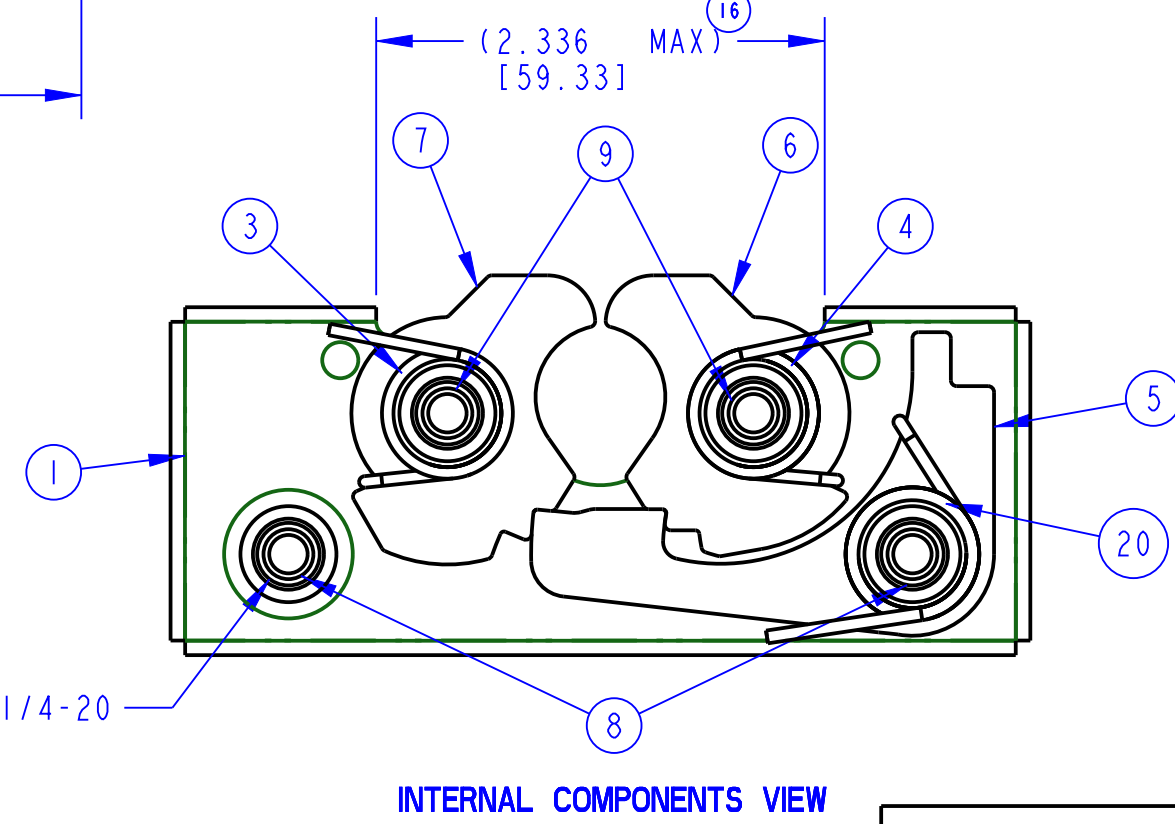
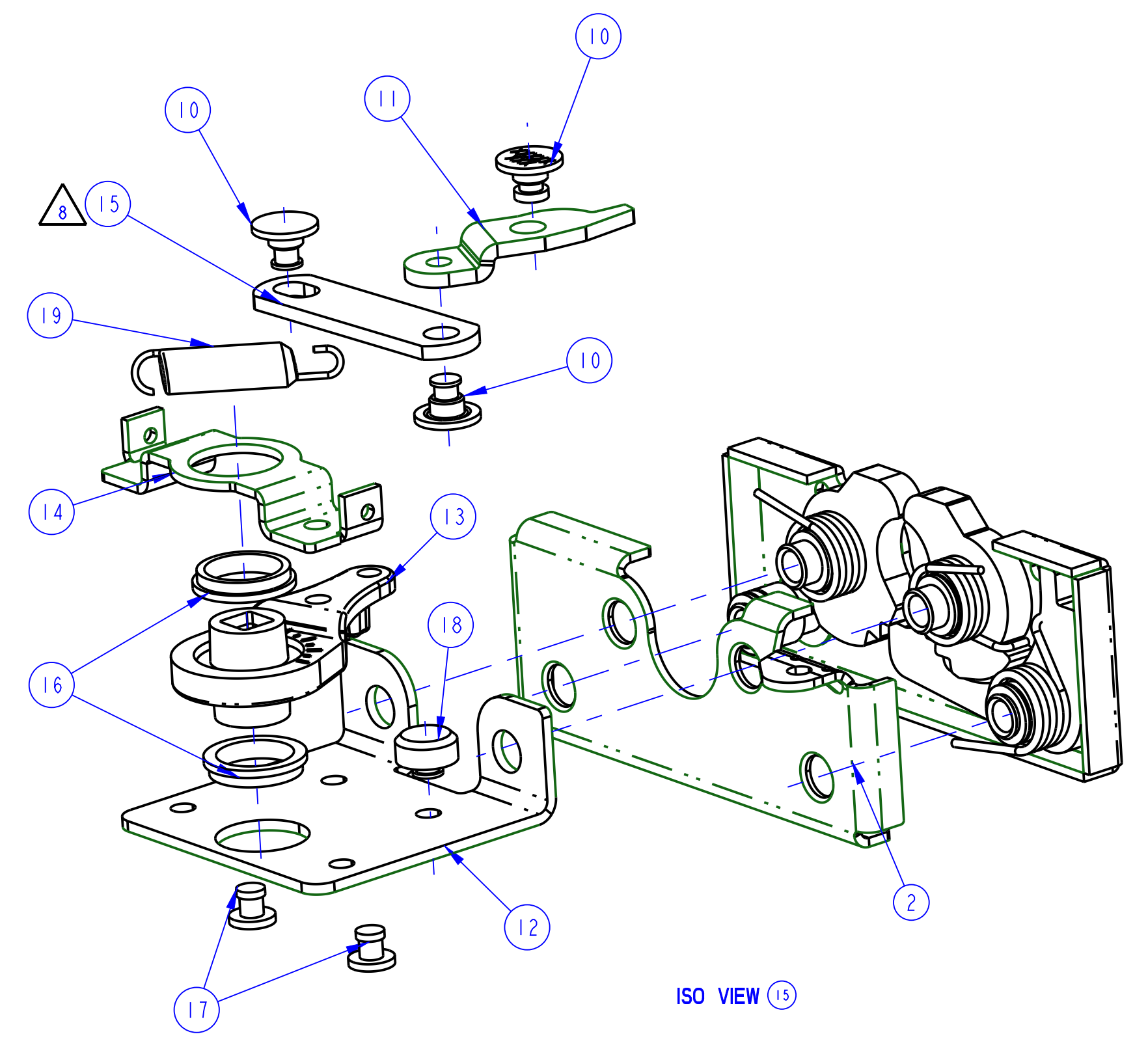
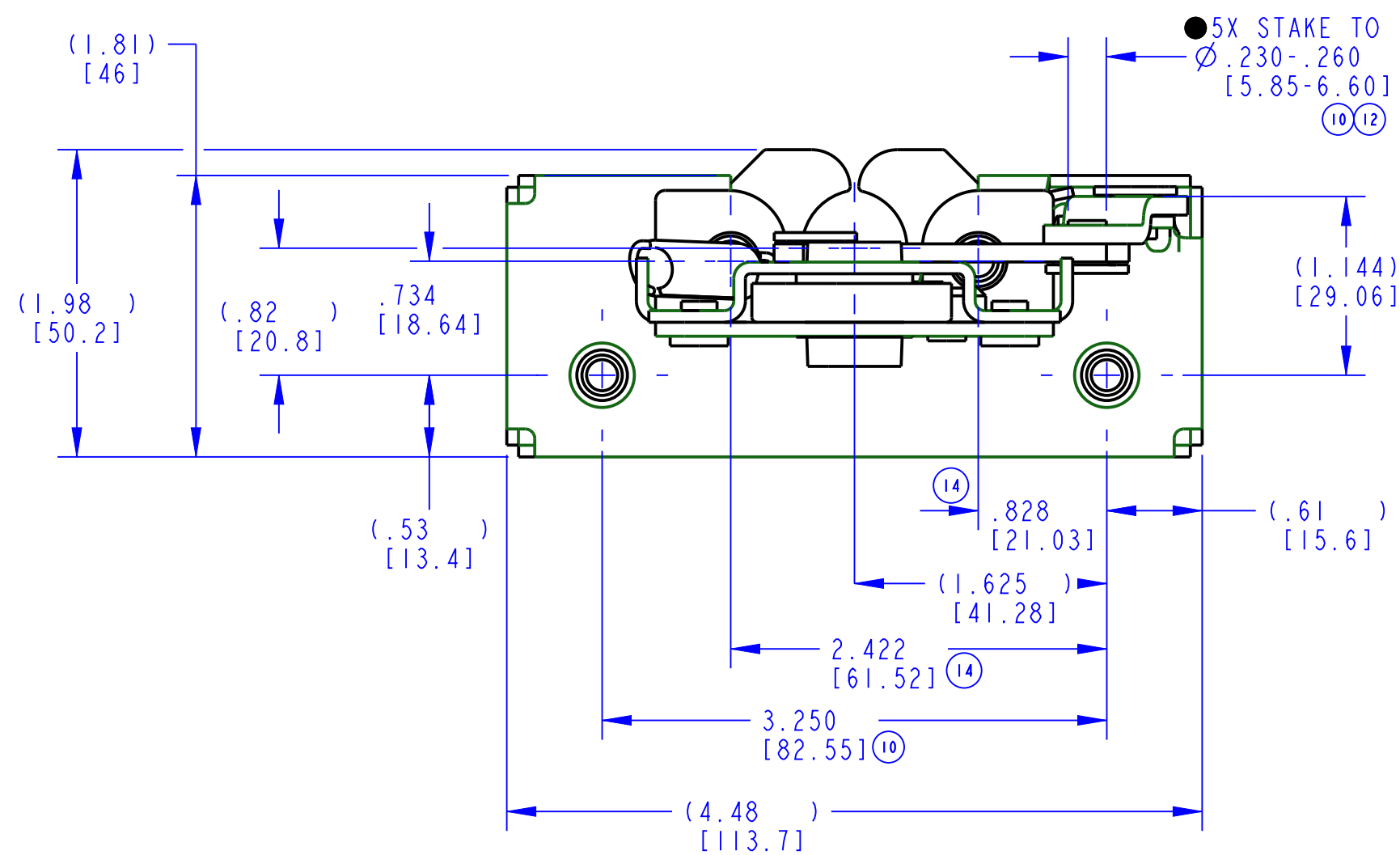
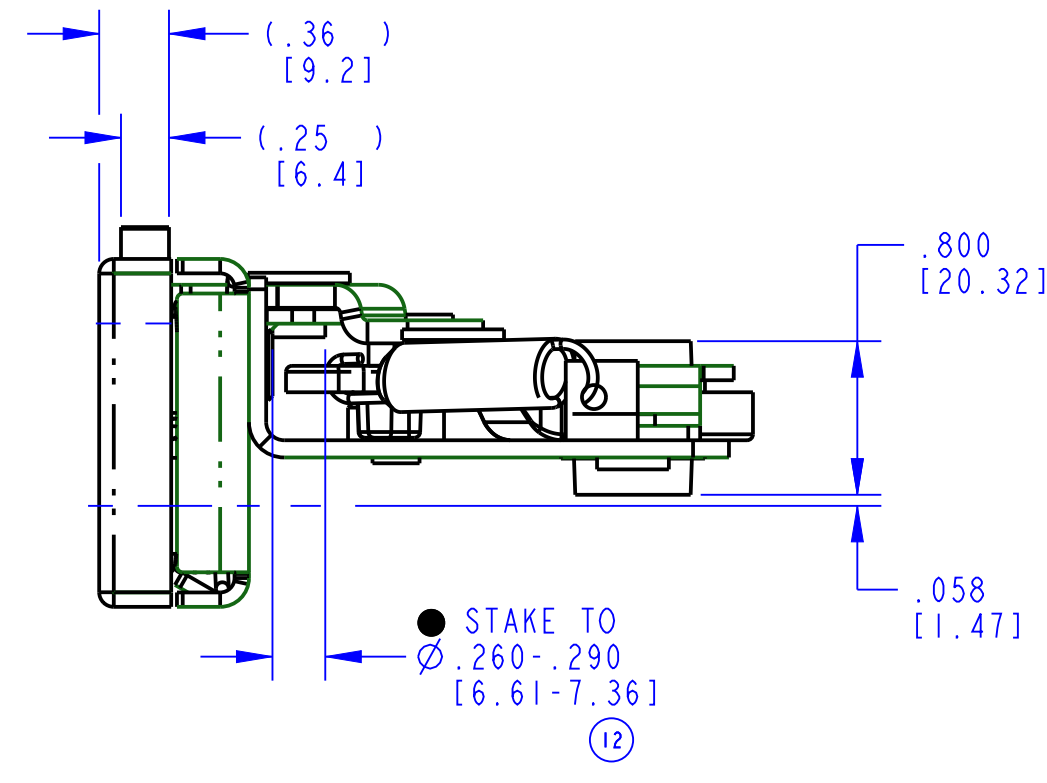
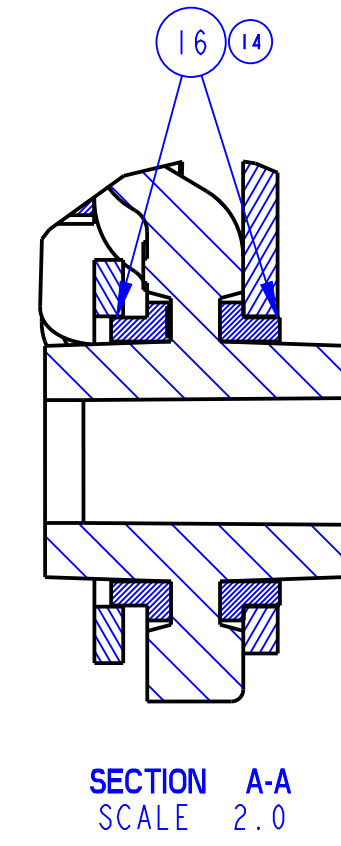
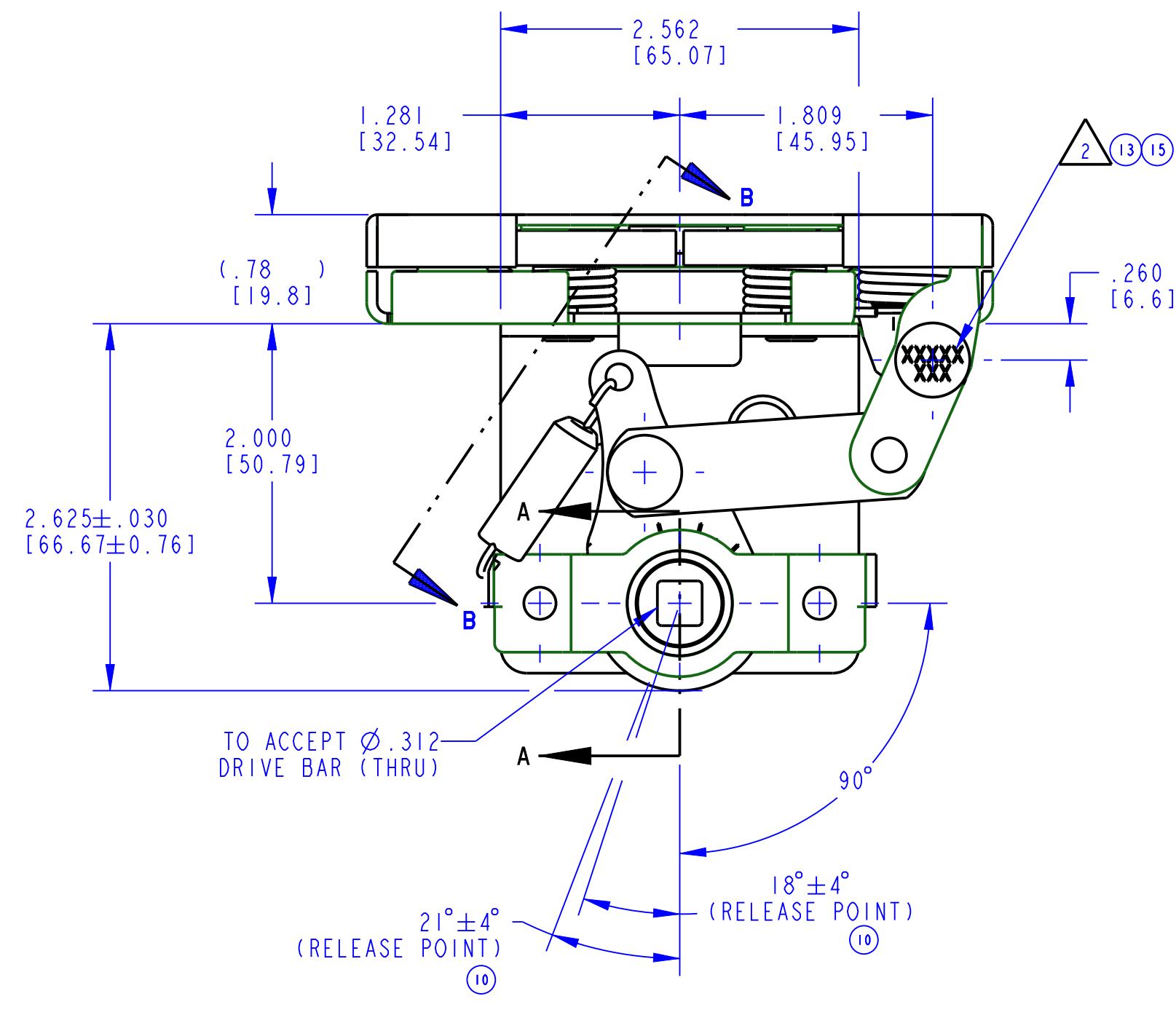
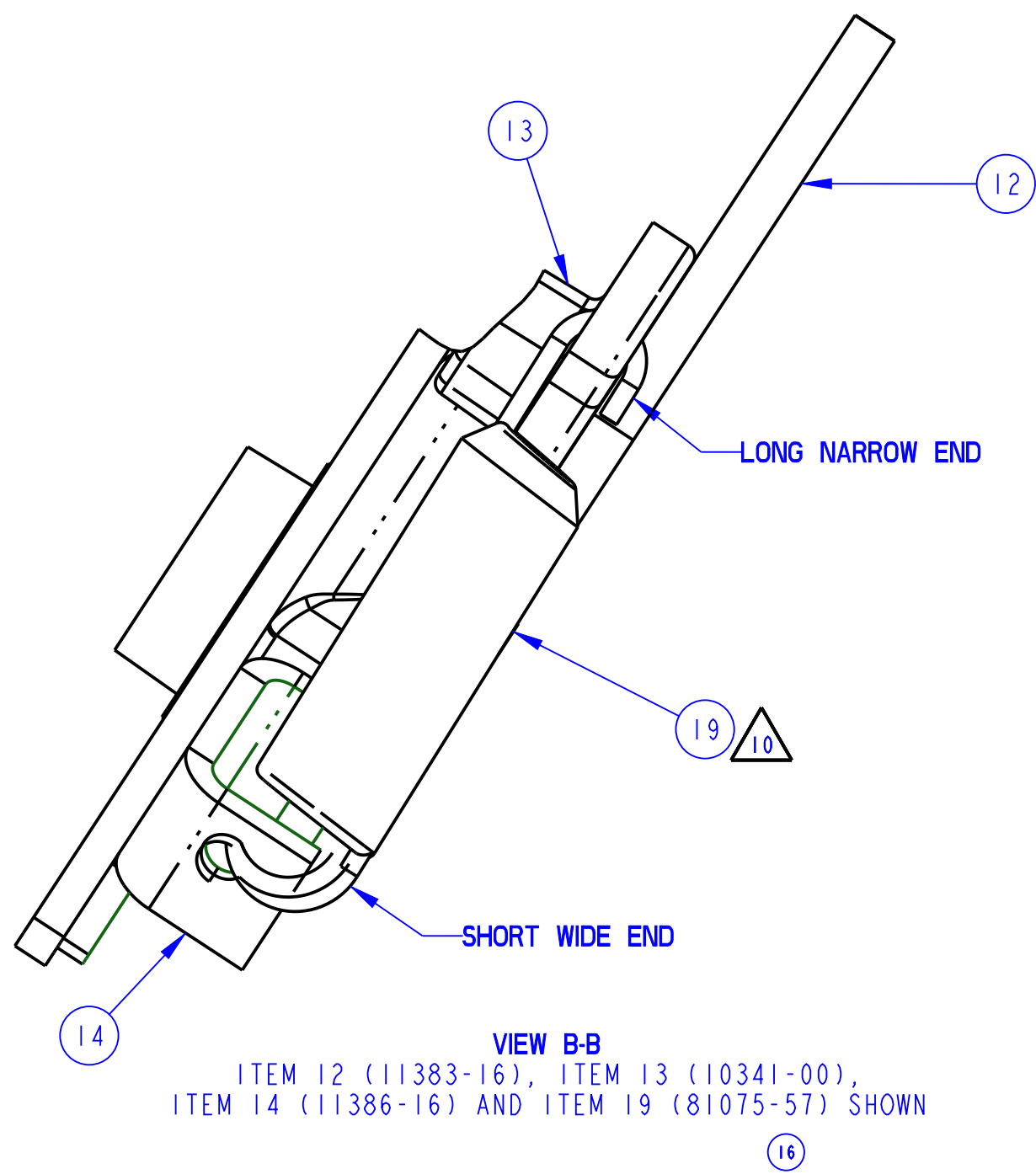


PART NUMBER	ITEM 1 PLATE (QTY)	ITEM 2 PLATE (QTY)	ITEM 3 SPRING (QTY)	ITEM 4 SPRING (QTY)	ITEM 5 CATCH (QTY)	ITEM 6 ROTOR (QTY)	ITEM 7 ROTOR (QTY)	ITEM 8 AXLE (QTY)	ITEM 9 AXLE (QTY)	ITEM 10 RIVET (QTY)	ITEM 11 LEVER (QTY)	ITEM 12 BRACKET (QTY)	ITEM 13 LINK (QTY)	ITEM 14 PLATE (QTY)	ITEM 15 LINKAGE (QTY)	ITEM 16 BUSHING (QTY)	ITEM 17 RIVET (QTY)	ITEM 18 STOP (QTY)	ITEM 19 SPRING (QTY)	ITEM 20 SPRING (QTY)	PART MARKING
11443-16	11439-16 (1)	11387-16 (1)	80853-00 (1)	80854-00 (1)	80631-26 (1)	81051-26 (1)	81052-26 (1)	81053-16 (2)	81055-16 (2)	80635-16 (3)	11393-16 (1)	11383-16 (1)	10341-00 (1)	11386-16 (1)	11397-16 (1)	80619-00 (2)	80601-15 (2)	81143-16 (1)	81075-57 (1)	19428-01 (1)	11443

REVISION	ECN	ECN BY	DESCRIPTION
10	8307	JLS 01/24/94	REDRAWN ON CAD. 4.478±.030 WAS 4.485±.030, 18°±4° WAS 18°±2°, 21°±4° WAS 21°±2°, 6X Ø.230/.260 AFTER STAKING WAS Ø.230/.260 AFTER STAKING (5 PLACES)
11	9017	REC 12/17/95	UPDATED DISPLAY OF 11397-16; REVISED PART NAME; REVISED NOTES 8 & 11
12	10999	REP 01/19/99	80635-16 REPLACED 80613-16; 5X Ø.230-.260 WAS 6X Ø.230-.260; ADDED Ø.260-.290 AFTER STAKING DELETED ROW 15 AND RENUMBERED BOM.
13	14219	TJM 02/19/08	REVISED NOTE 9, PROD CODE UPDATED DISPLAY
14	20193	BAR 01/27/05	ADDED PART WEIGHT, 19428-01 1/4-20 WAS 1/4-20 UNC-2B REVISED BOM, NOTES; 16 WAS 17
15	36200	AGC 08/11/11	UPDATE: FORMAT, DESC, CR/PR DIMS. ADDED: ISO VIEW.
16	38532	AGJ 04/28/14	ADDED: VIEW B, NOTES 10, 11. UPDATED PR/CR DIMS, NOTE 2. 2.336 WAS 2.34.



- NOTES: UNLESS OTHERWISE SPECIFIED;
- ASSEMBLY COMPLIES WITH STRENGTH REQUIREMENTS OF SAE STANDARD J839.
 - IDENTIFY ASSEMBLY WITH PART NUMBER AND DATE CODE APPROXIMATELY AS SHOWN, OR IN OTHER APPROVED LOCATIONS AS OUTLINED IN ES-121. ORIENTATION OF THE RIVET CONTAINING PART NUMBER AND DATE CODE NOT IMPORTANT.
 - AXLES TO WITHSTAND A MINIMUM OF 120 IN-LB [13.6 Nm] OF TORQUE.
 - TIGHTEN GRADE 5 OR BETTER MOUNTING FASTENERS TO THE FASTENER MANUFACTURER'S RECOMMENDED TORQUE VALUE; HOWEVER, DO NOT EXCEED 120 IN-LB [13.6 Nm].
 - ROTORS TO FULLY ENGAGE THE CATCH IN THE PRIMARY AND SECONDARY POSITIONS WHEN CLOSED WITH A Ø.678 [17.22] GAUGE PIN.
 - WHEN MOUNTING LATCH, MOUNTING HOLE SIZE NOT TO EXCEED Ø.312 [7.92].
 - USE WITH TRIMARK'S Ø.675 [17.15] LATCH BOLT.
 - ORIENTATION OF SLOT IN LINK (ITEM 15) NOT IMPORTANT.
 - DIMENSIONS IN [] ARE MILLIMETERS FOR REFERENCE ONLY.
 - ORIENTATION OF SPRING (ITEM 19) IS CRITICAL TO PROPER FUNCTION.
 - OPPOSITE HAND ITEM IS 11442-16.

DIMENSIONS	ANGLES
X.X = ±.1	° = ± 1°
X.XX = ±.06	
X.XXX = ±.060	

<p>INDICATES REQUIRED ASSEMBLY INFORMATION. UNLESS OTHERWISE SPECIFIED (UOS): UNLESS OTHERWISE SPECIFIED (UOS): UNLESS OTHERWISE SPECIFIED (UOS):</p>		<p>DRAWN BY: KPE 08/17/87 CHECKED BY: BAB PROJECT: L86057-5 PRODUCT CODE: E10 (050-0150)</p>		<p>TriMark 500 Bailey Avenue P. O. Box 350 New Hampton, Iowa 50659 U.S.A. Tel: 641-394-3188 Fax: 641-394-2392</p>
<p>TOLERANCES UNLESS OTHERWISE SPECIFIED (UOS): X.XX ±.50° DO NOT SCALE DRAWING</p>		<p>CUSTOMER PART NUMBER: - PART WEIGHT: (1.21 LB) SURFACE AREA: (14)</p>		
<p>REF. T/M OP 4.20-2 FOR SUP. QUALITY REQ. REF. T/M OP 4.20-3 FOR INT. QUALITY REQ.</p>		<p>CUSTOMER: - PART NUMBER: - SCALE: 1.0 PART NUMBER: 11443</p>		
<p>DESCRIPTION: 050-0150, RH, 2POSN, 1/4-20, LCH/LNK, ODEG</p>		<p>SIZE: D</p>		