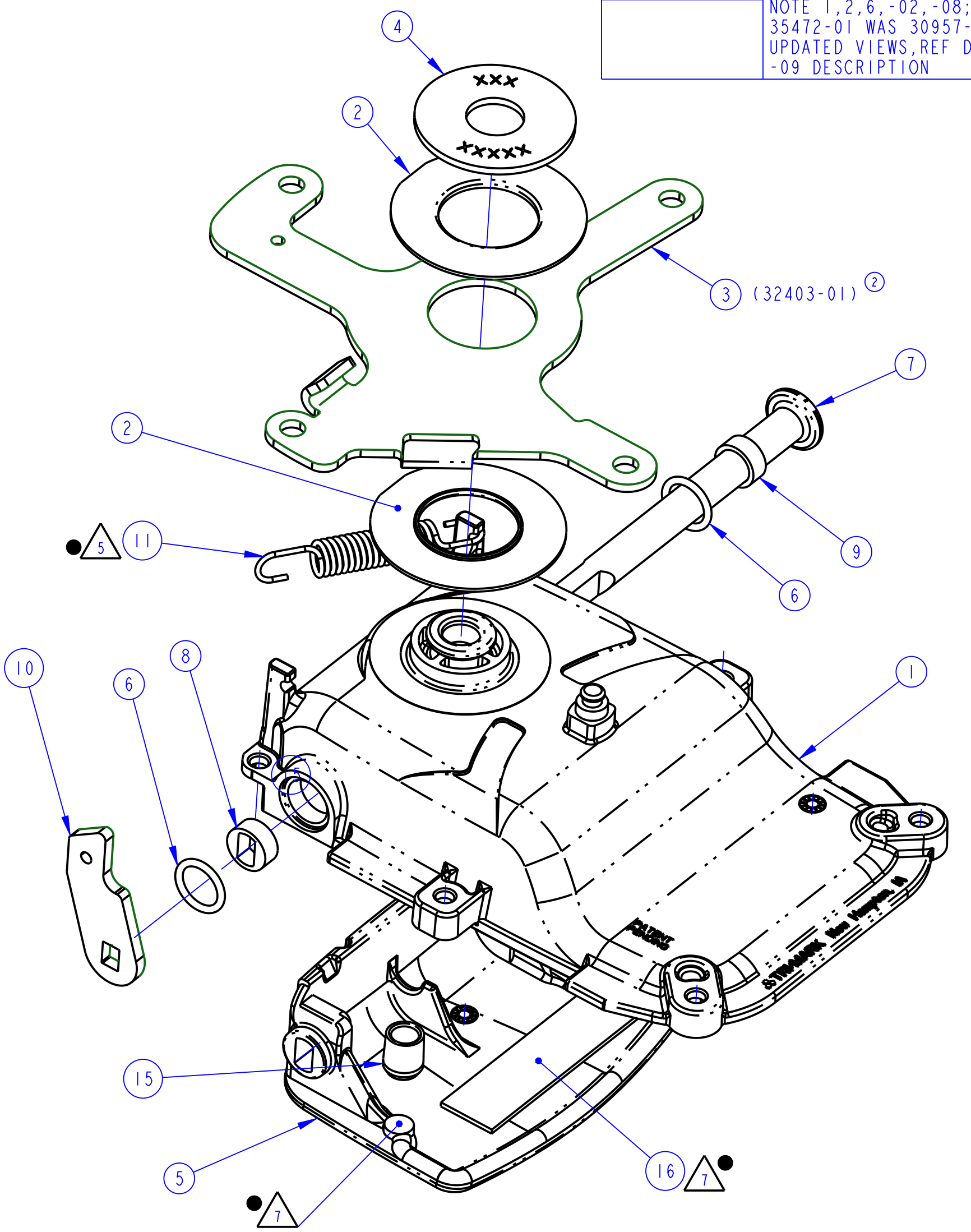
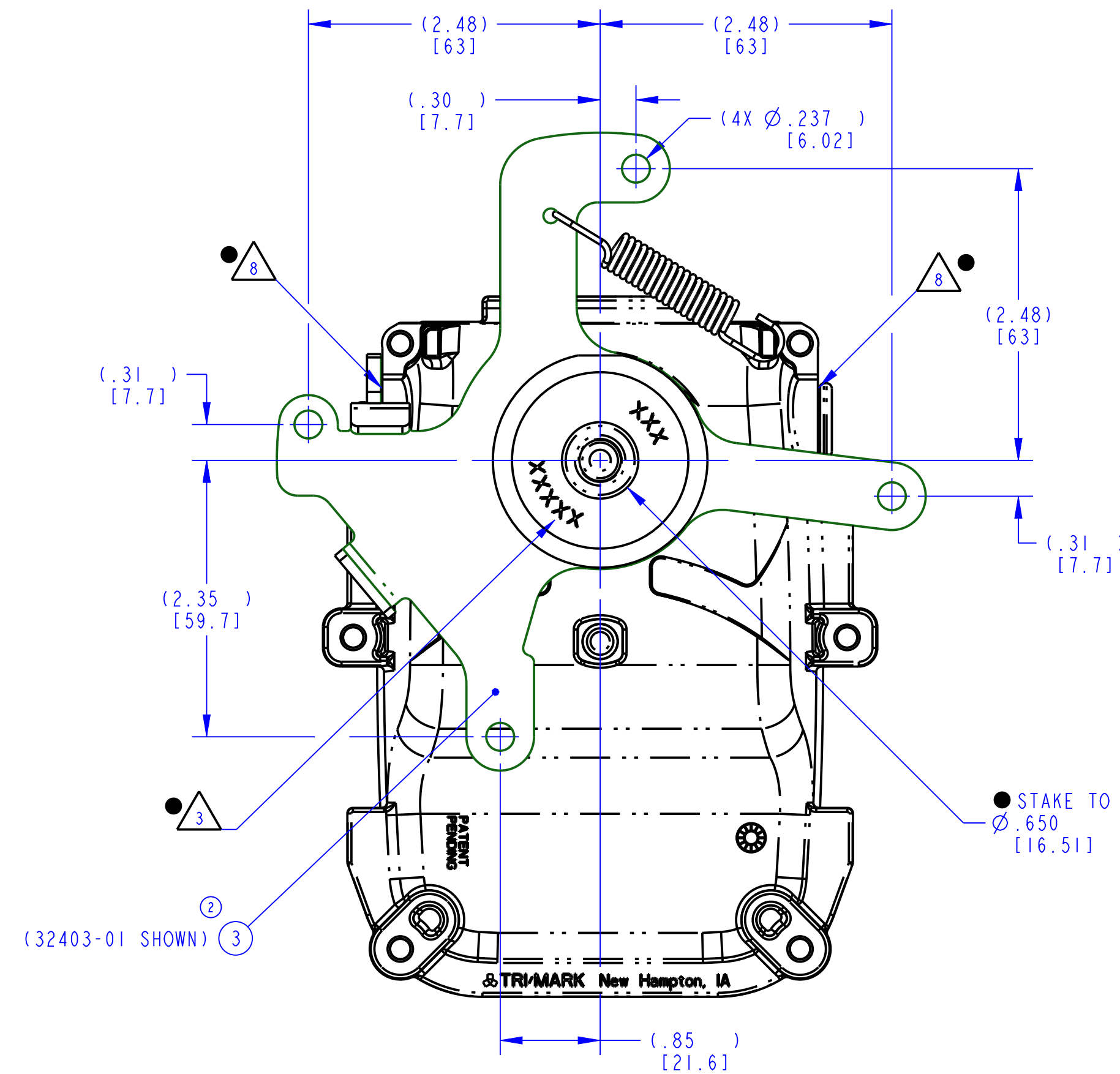
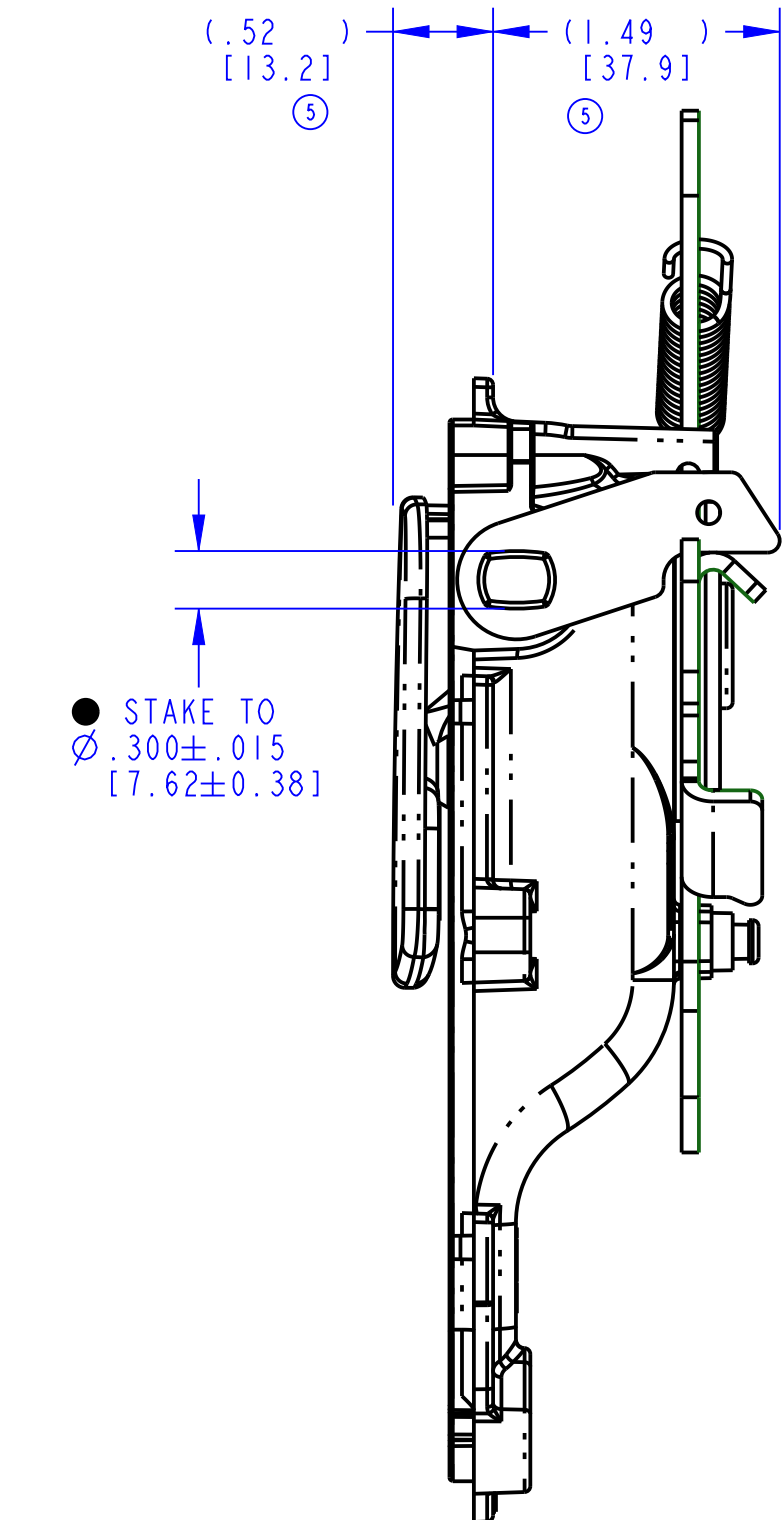
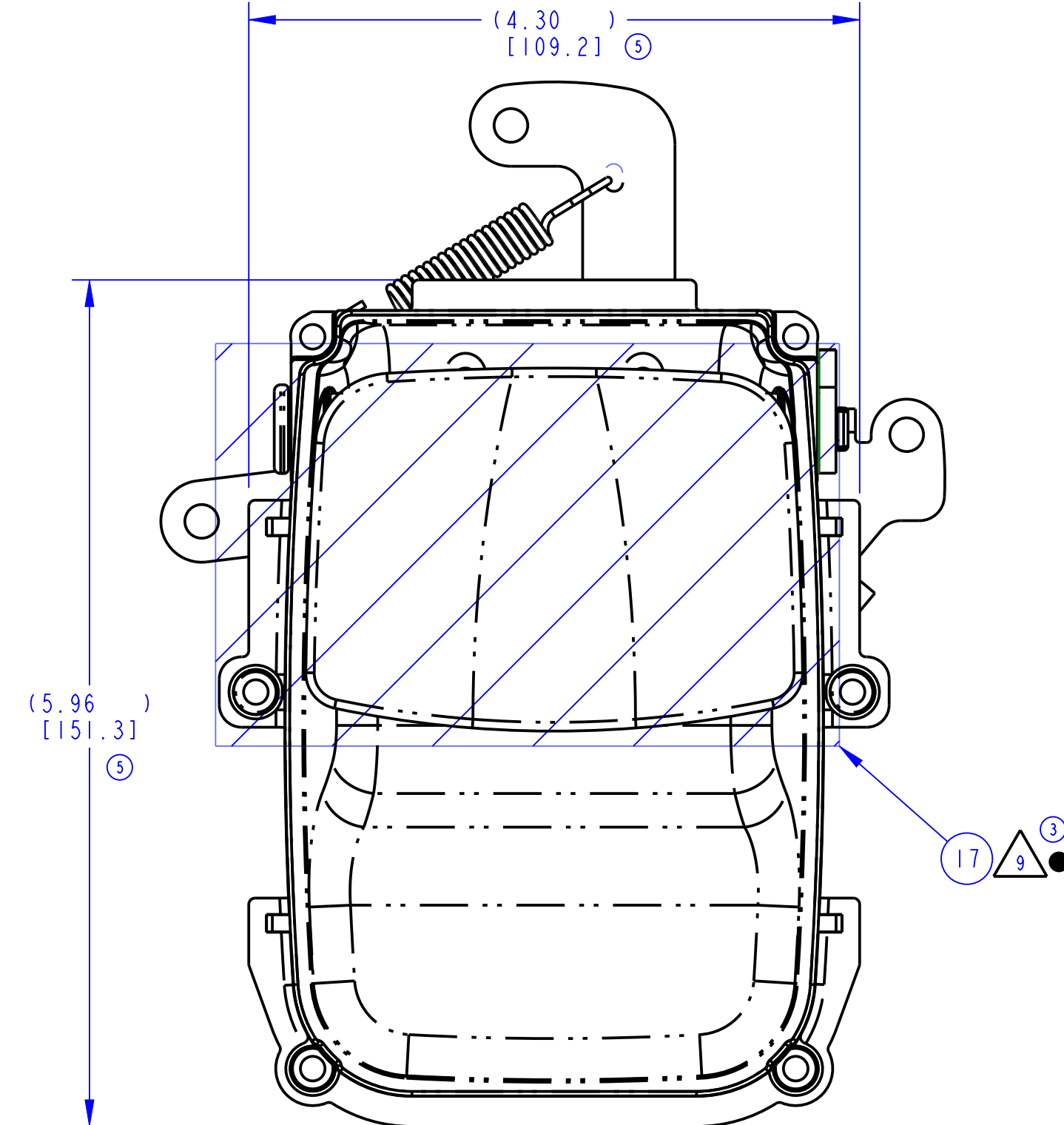
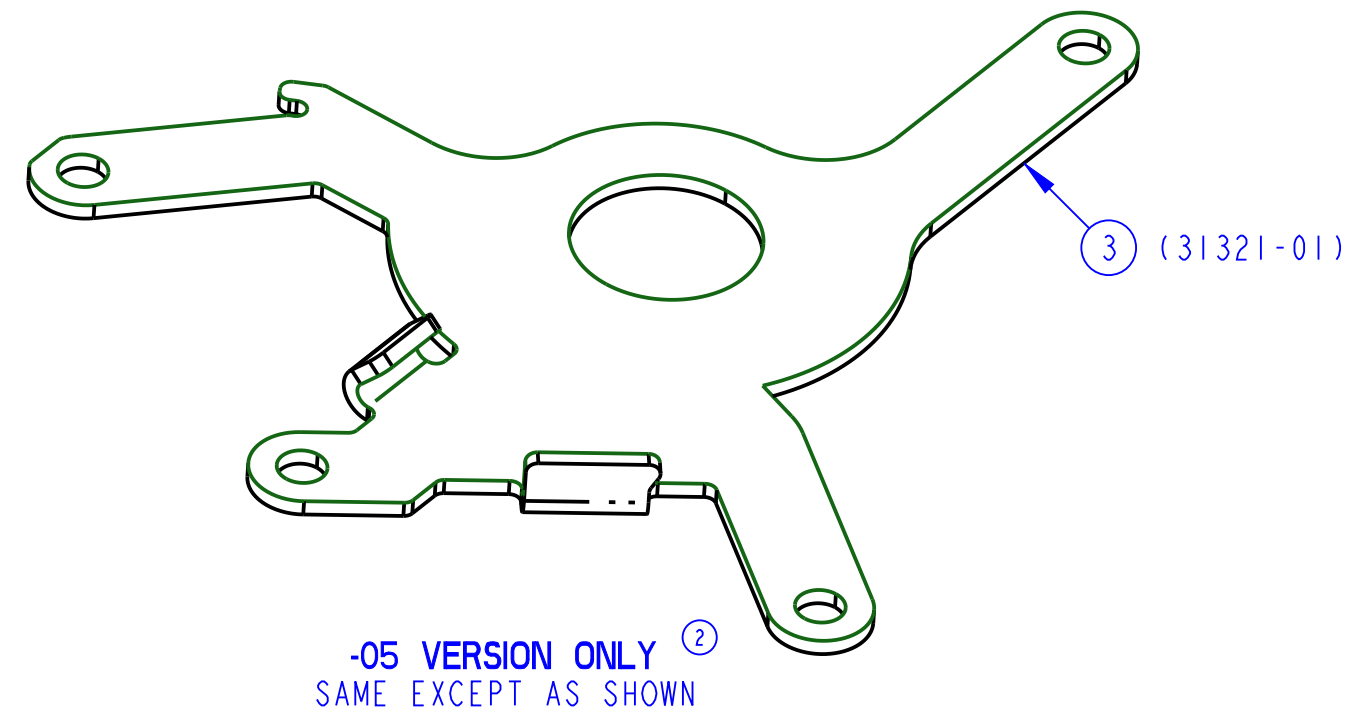
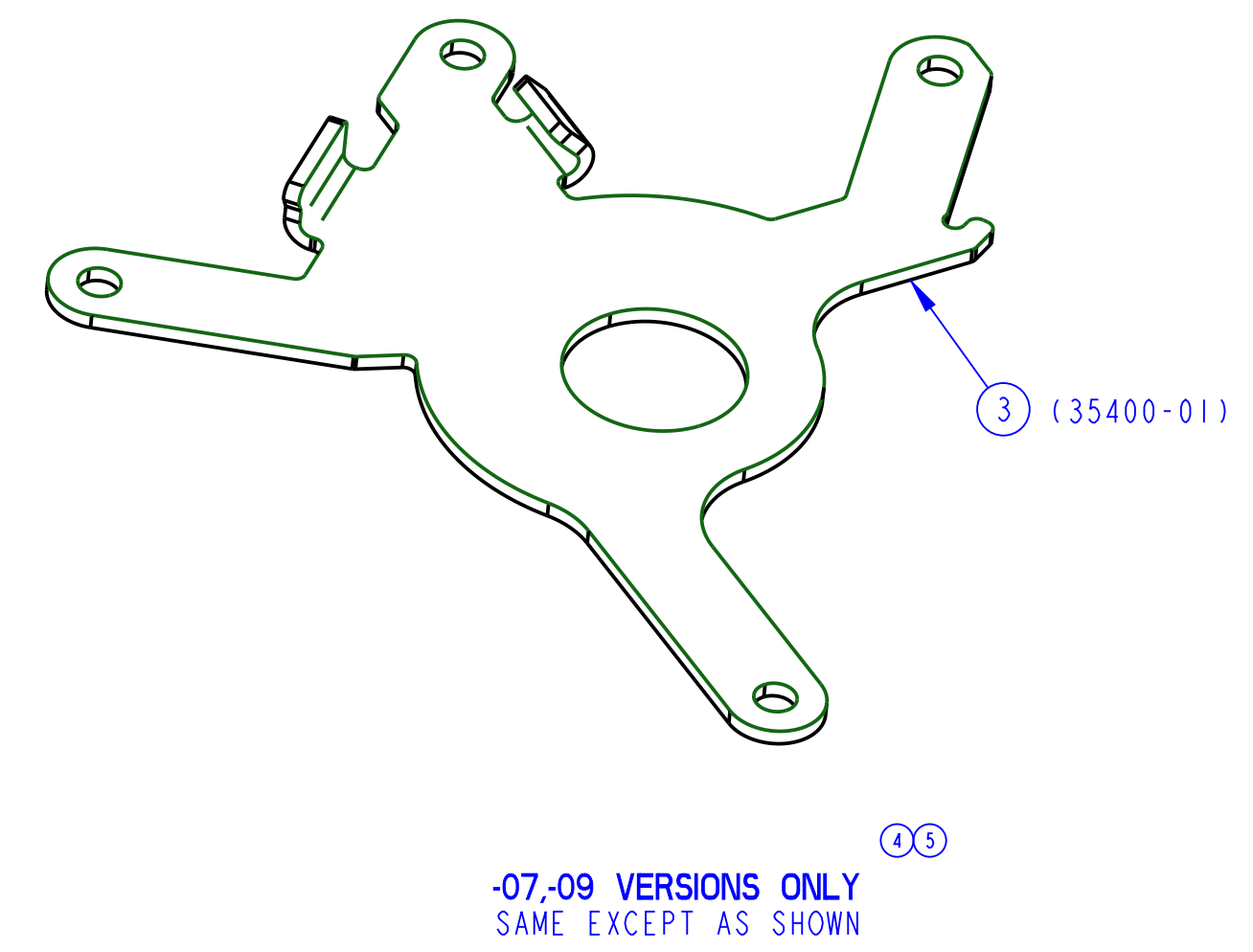
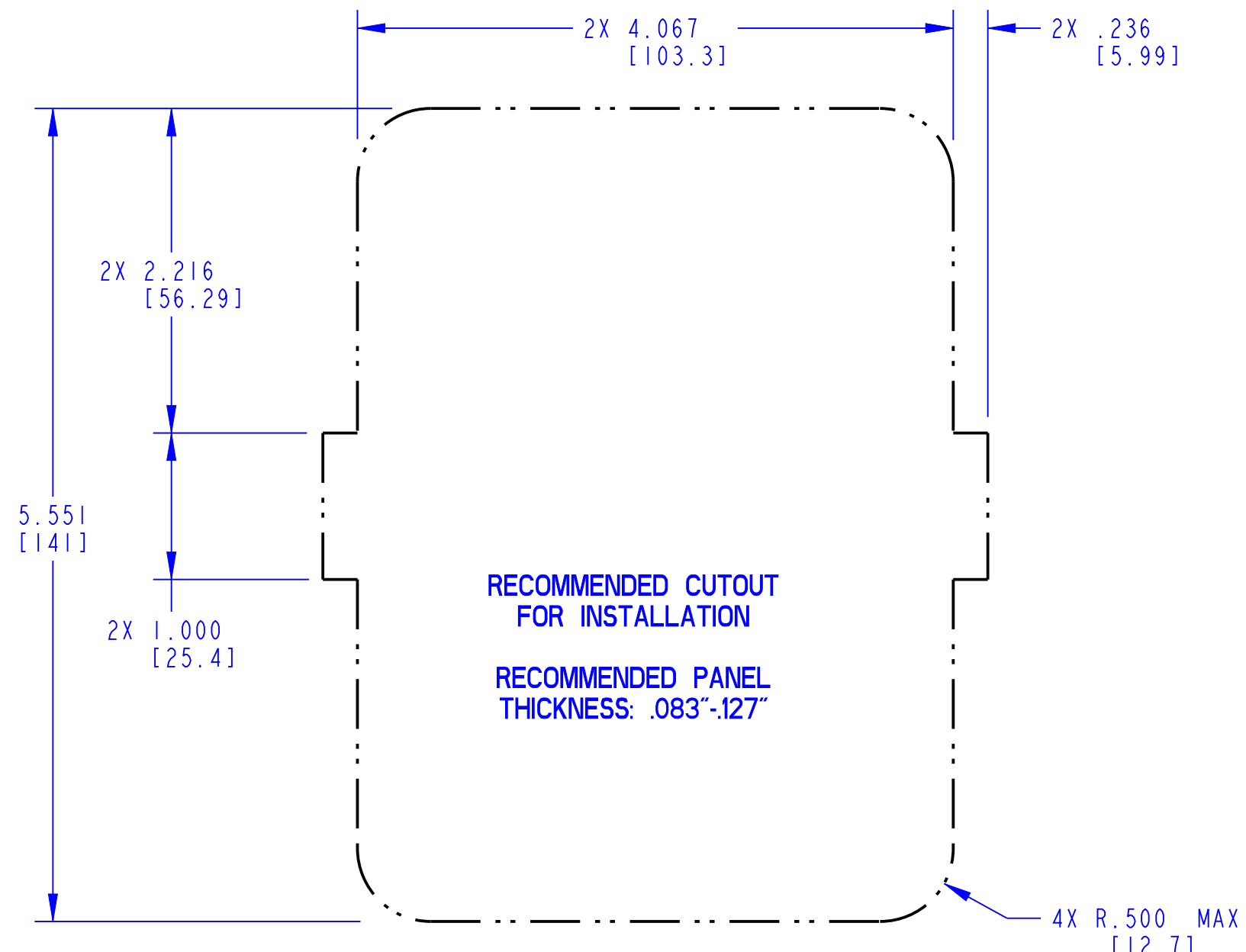


PART NUMBER DESCRIPTION	ITEM 1 HOUSING (QTY)	ITEM 2 BUSHING (QTY)	ITEM 3 PLATE (QTY)	ITEM 4 WASHER (QTY)	ITEM 5 PADDLE (QTY)	ITEM 6 O-RINGS (QTY)	ITEM 7 AXLE (QTY)	ITEM 8 BUSHING (QTY)	ITEM 9 BUSHING (QTY)	ITEM 10 DRIVE (QTY)	ITEM 11 SPRING (QTY)	ITEM 15 BUMPER (QTY)	ITEM 16 TAPE (QTY)	ITEM 17 FILM (QTY)	FINISH	PART MARKING
31343-01 030-1800, LGB, RH 4 PT PVTPL, NLKG	33856-01 (1)		32403-01 (1)		33855-01 (1)	30947-01 (2)							20058-01 (1)	N/A	PAINT, BLACK, LOW GLOSS	31343
31343-03 030-1800, CNNC, RH 4 PT PVTPL, NLKG	33856-02 (1)														PLATE, COPPER-NICKEL-NICKEL-CHROME	
31343-05 030-1800, CNNC, RH 4 PT PVTPL, NLKG		30944-01 (2)	31321-01 (1)	30945-01 (1)		N/A	30951-01 (1)	80796 (1)	80797 (1)	30948-01 (1)	25614-01 (1)	35472-01 (1)	N/A	20711-01 (1)	HSG-PAINT, BLACK, LOW GLOSS PDL-PLATE, COPPER-NICKEL-NICKEL-CHROME	
31343-06 030-1800, LGB/CNNC, RH 4 PT PVTPL, NLKG	33856-01 (1)		32403-01 (1)		33855-02 (1)											
31343-07 030-1800, LGB/CNNC, RH 4 PT PVTPL, NLKG						30947-01 (2)							20058-01 (1)		PLATE, COPPER-NICKEL-NICKEL-CHROME	
31343-09 030-1800, CNNC, RH 4 PT PVTPL, NLKG	33856-02 (1)		35400-01 (1)													

REVISION	EN	BY	DESCRIPTION
K	PRE-RLSE	JFB 02/18/13	30957-02 WAS 81586-00 UPDATED -01 BOM
L	PRE-RLSE	TAM 07/19/13	ADDED NOTES 7 AND 8, UPDATED ALL BOM
1	RLSE	JFB 01/24/13	RELEASE FOR PRODUCTION
2	38452	RLO 11-24-14	ADDED -05, -06 VERSION, PIVOT PLATE VIEW (-05 ONLY) AND BAGGED ITEMS VIEW, UPDATED PRODUCT CODE, VIEWS, SPRING DEPICTION, BOM; REMOVED -00 TO MATCH AS400 (2 PLACES)
3	38755	RLO 11-25-14	ADDED ITEM 17 (FILM), NOTE 9, UPDATED VIEW TO SHOW FILM PROTECTOR LOCATION.
4	38797	JSM 12/21/14	ADDED VIEW, -07, -08, -09 VERSIONS, REVISED NOTE
5	39530	WPC 09/16/17	DELETED ITEM 12, 13, 14, NOTE 1, 2, 6, -02, -08; 35472-01 WAS 30957-02; UPDATED VIEWS, REF DIMS, -09 DESCRIPTION



- NOTES: UNLESS OTHERWISE SPECIFIED; ⑤
- ③ STAMP WASHER (ITEM 4) WITH PART NUMBER AND DATE CODE PER ES-121. LOCATE APPROXIMATELY AS SHOWN. ORIENTATION IS NOT IMPORTANT.
 - ④ FINISH IS FOR REFERENCE ONLY.
 - ⑤ SPRING (ITEM 11) ORIENTATION IS NOT IMPORTANT.
 - ⑦ MAKE SURE TAPE (ITEM 16) DOES NOT COVER POST ON PADDLE.
 - ⑧ MAKE SURE O-RING (ITEM 6) IS NOT PINCHED BETWEEN HOUSING (ITEM 1) AND AXLE HEAD (ITEM 7) OR DRIVE (ITEM 10).
 - ⑨ APPLY PROTECTIVE FILM (ITEM 17) IN APPROXIMATE LOCATION SHOWN.



TOLERANCES UNLESS OTHERWISE SPECIFIED (US)		DRAWN BY	
ASME Y14.5M-1994		JFB	2011-08-12
INCH MILLIMETER		CHECKED BY	CRZ
X.X ±.1	X ±.25	PROJECT	2013-07-23
X.XX ±.03	X.X ±.08	11095	PRODUCT CODE
X.XXX ±.010	X.XX ±.025	C49 (030-1800)	CUSTOMER
ANGLES		CUSTOMER PART NUMBER	
X° ±.3°			
X.X° ±.1.0°		DESCRIPTION	
X.XX° ±.50°		SEE BOM	
DO NOT SCALE DRAWING		PART WEIGHT	SURFACE AREA
REF. TYP OP 4.20-2 FOR SUP. QUALITY REQ. REF. TYP OP 4.20-3 FOR INT. QUALITY REQ.		(1.86 LB)	
SIZE	SCALE	SHEET	PART NUMBER
D	1.0	1/1	31343

